



U.S Efforts to Operationalize One Health

Colin Basler DVM, MPH, DACVPM
Deputy Director, One Health Office
Centers for Disease Control and Prevention

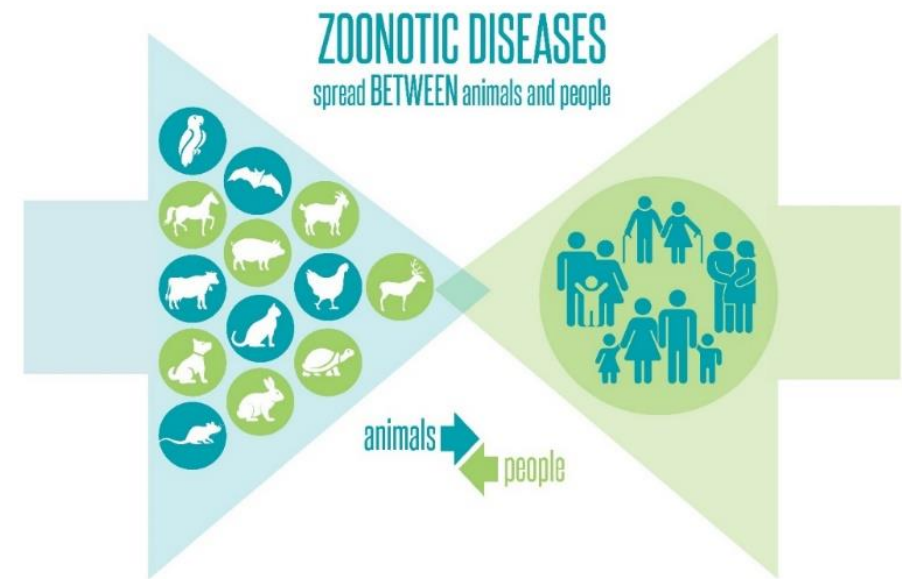
26 October 2021

The health of humans is connected to the health of animals, plants and our shared environment.

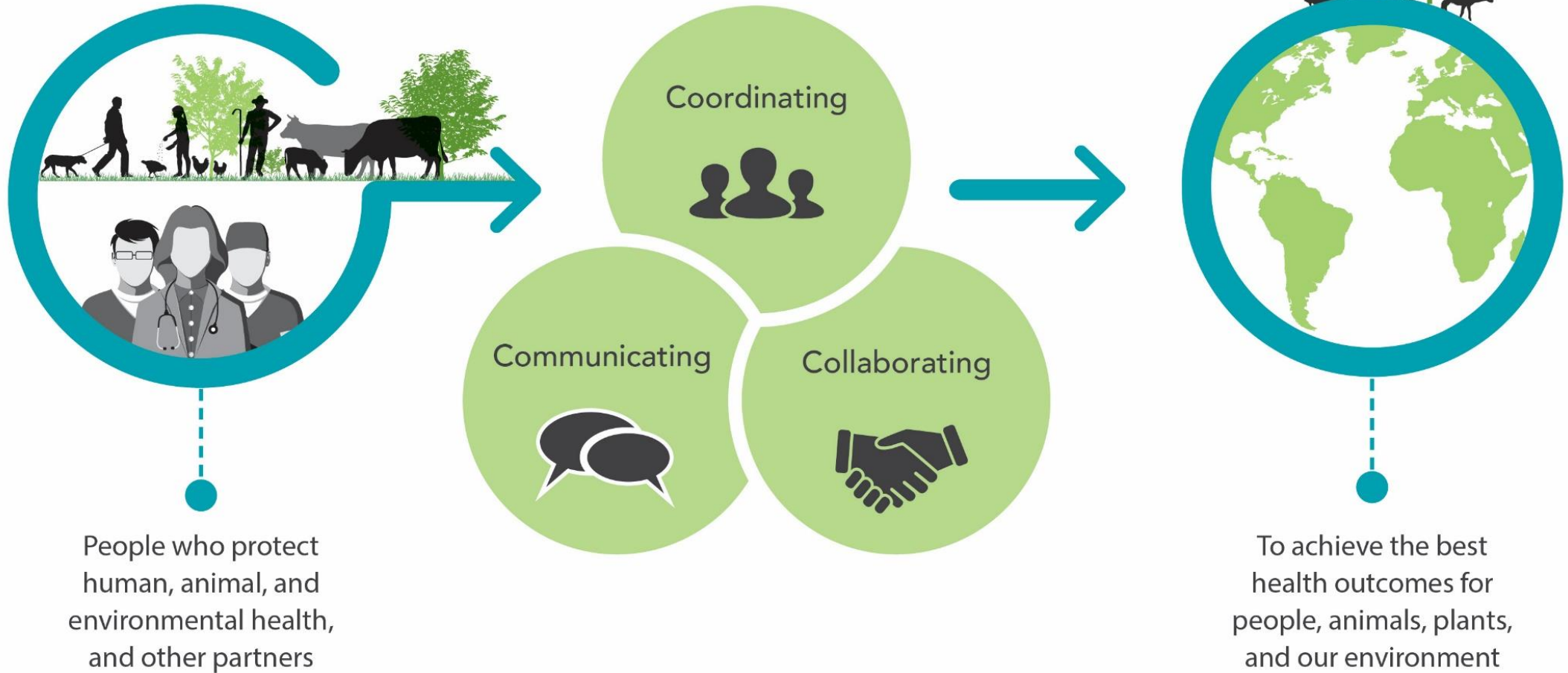


Zoonotic Diseases are a Threat to Health Security

- **6 in 10** existing human infectious diseases are zoonotic
- **3 in 4** emerging infectious diseases of humans (including COVID-19, Ebola, and influenza) have animal origin
- **3 out of 5** new human diseases that appear every year are of animal origin
- **8 in 10** agents with potential bioterrorist use are zoonotic pathogens

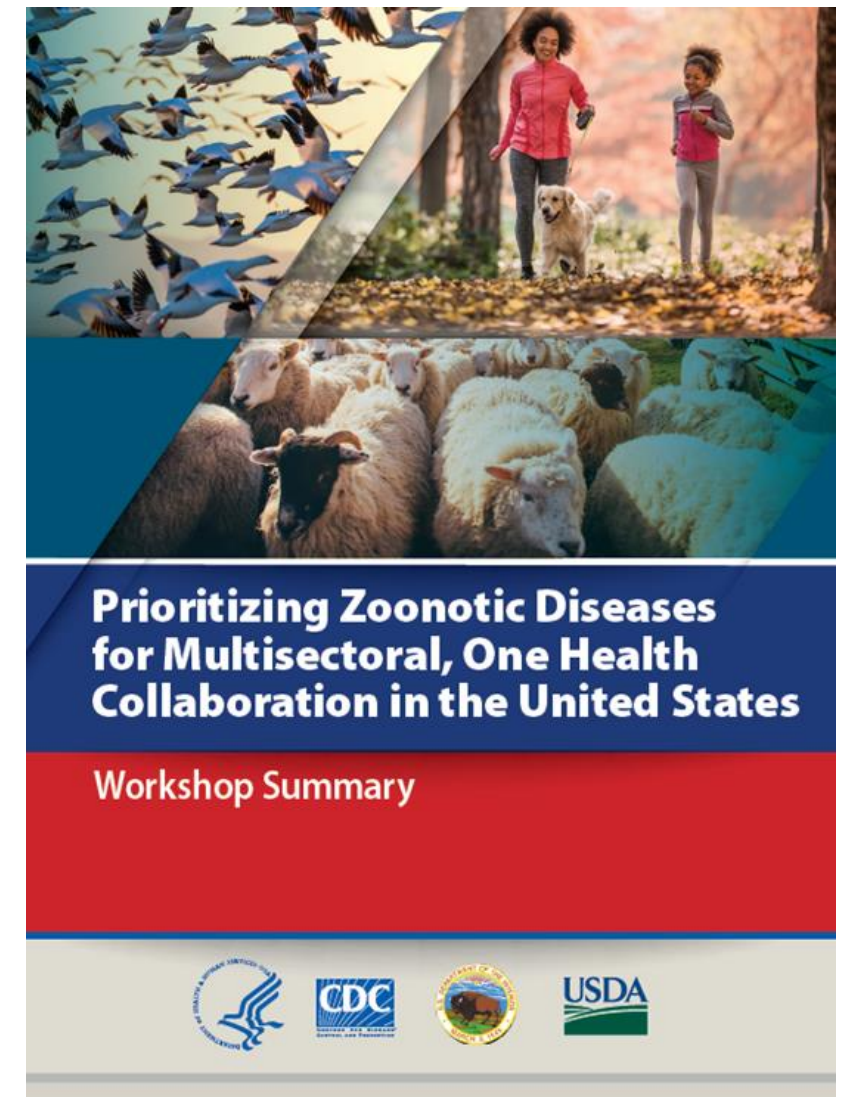


One Health



United States One Health Zoonotic Disease Prioritization Workshop – December 2017

- 3 federal partners used a One Health approach to:
 - Prioritize zoonotic diseases of greatest national concern that should be jointly addressed by human, animal, and environmental health sectors
 - Develop plans for implementing and strengthening One Health approaches to address these zoonoses in the United States
- Workshop Summary with additional details at:
 - www.cdc.gov/onehealth/domestic-activities/us-ohzdp.html



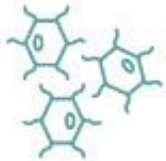
Top 8 Zoonotic Diseases of National Concern in the U.S. *for One Health Collaboration*

1 Zoonotic influenza

2 Salmonellosis

3 West Nile virus

4 Plague



5 Emerging coronaviruses
(SARS, MERS)



6 Rabies



7 Brucellosis



8 Lyme disease



www.cdc.gov/onehealth

Key Themes and Needs for the United States

- **Formal One Health coordination mechanism** including for agency/Department leadership and technical levels
- Importance of **leadership engagement**
- **National One Health Framework** for United States
- Opportunities for **improved collaboration and communication** for surveillance and data sharing
- **Strengthening of joint outbreak investigations** for priority zoonoses
- **Coordinated education and outreach efforts** around prioritized zoonoses to stakeholders
- Joint discussion on **research** needs



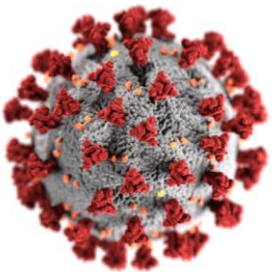
One Health Federal Interagency COVID-19 Coordination Group (OH-FICC)

>20 federal agencies representing multiple departments

Chaired by CDC

Coordination with >150 U.S. government partners

Purpose: Bring together representatives from key federal agencies representing multiple departments to collaborate to address One Health technical aspects of COVID-19



OH-FICC Agency Representation



National Institutes
of Health



FEMA

Five OH-FICC Subgroups and Agency Chairs

Companion Animals

(Mass Care & Working Animals)



CDC

Animal Diagnostics and Testing



FDA-CVM, USDA-NVSL

Wildlife and Zoo Animals



DOI USGS

Production Animals

(previously Livestock)

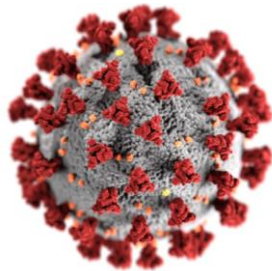


USDA-APHIS

Environmental Health



ATSDR, CDC



Highlighted Materials Created by OH-FICC Subgroups

Interim Guidance for SARS-CoV-2 Testing in North American Wildlife



One Health Toolkit for Health Officials Managing Companion Animals with SARS-CoV-2

Interim Guidance for Animal Health and Public Health Officials Managing Farmed Mink and other Farmed Mustelids



Recommendations for Disaster Sheltering of Household Pets, Service Animals, and Support Animals

FAQs on COVID-19 and Bats, Wild Animals, and Game Meat

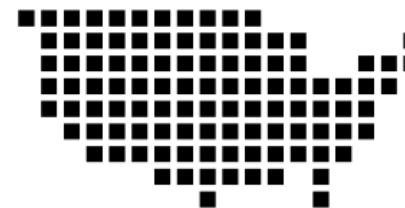


SARS-CoV-2 Case Definition for Animals

One Health COVID-19 Coordination in the United States



**One Health Federal Interagency COVID-19
Coordination group
(OH-FICC)**



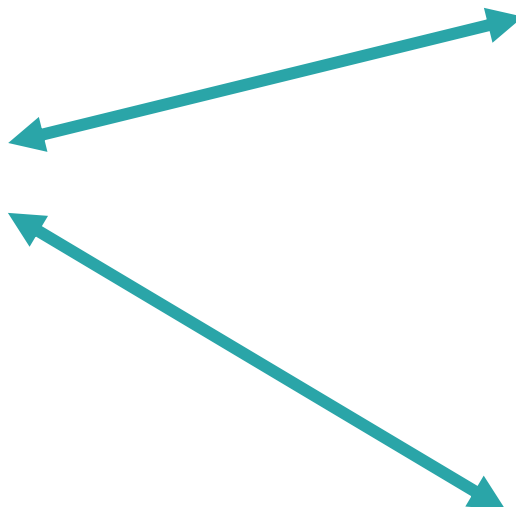
**One Health State-Federal COVID-19
Coordination Calls**

*State, Tribal, Local, & Territorial public health,
animal health, wildlife*

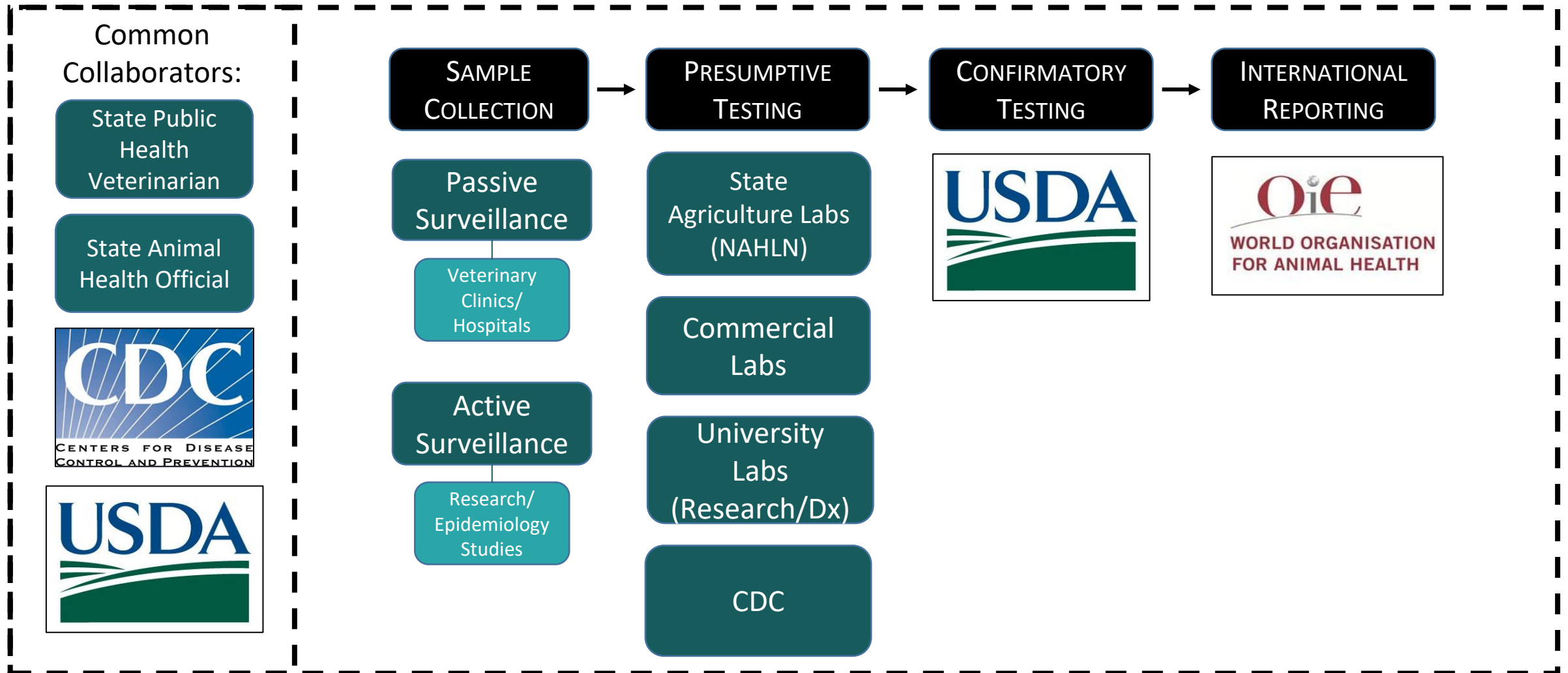


**One Health Partners COVID-19
Update Webinar**

NGOs, academic, industry, & other partners

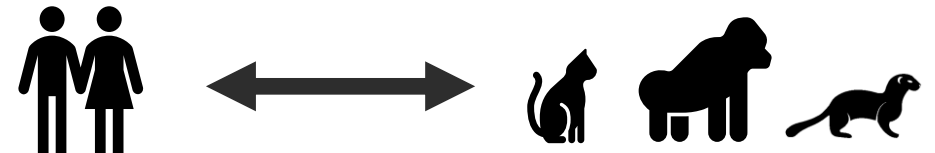
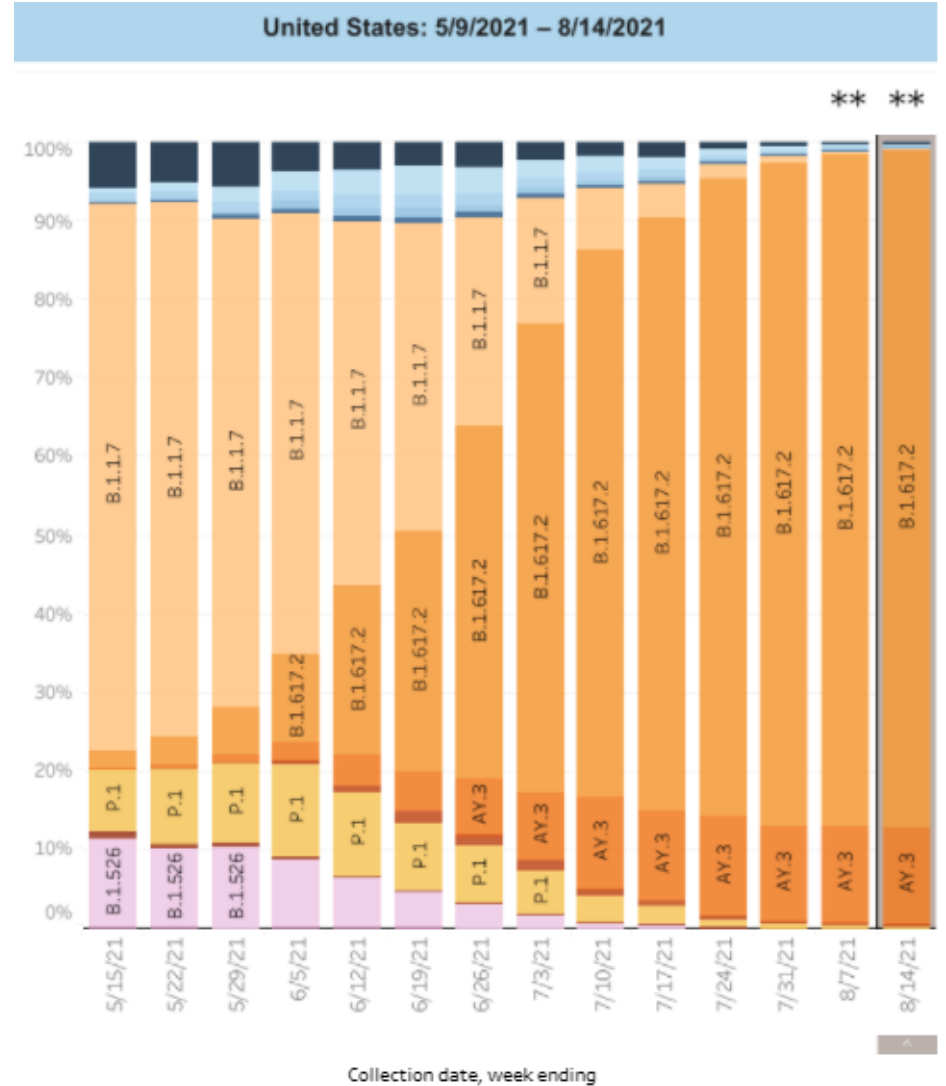


Coordination Around SARS-CoV-2 Animal Case Investigations



SARS-CoV-2 Interagency Group One Health Genomics Working Group

- Transmission dynamics in animal populations & between human & animal populations;
- Risks associated with host shift events in the emergence of new viral strains;
- Research & science needed to evaluate how the zoonotic nature of SARS-CoV-2 will impact human and animal populations;
- Other relevant topics as needs arise



On-Farm Investigations: People, Mink and Other Animals with SARS-CoV-2



We know that SARS-CoV-2 infection spreads most commonly from **person to person**



Infected **people** introduce SARS-CoV-2 **to farmed mink**



Infected **mink** spread SARS-CoV-2 **to other farmed mink**



Infected **mink** spread SARS-CoV-2 **to cats and dogs**



Infected **mink** spread SARS-CoV-2 **to wild mink**



Mink to human spread suspected in United States, and confirmed in Europe

Public Health and Animal Health Recommendations



Screen and restrict access to the farm and buildings where animals are kept



6ft



Physical distance



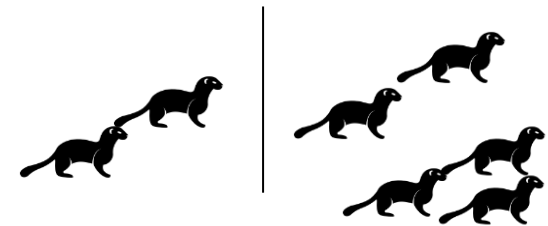
Wear appropriate PPE even if you don't feel sick



Stay home when sick



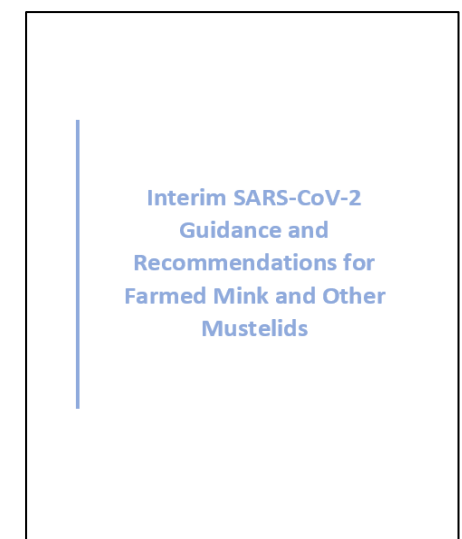
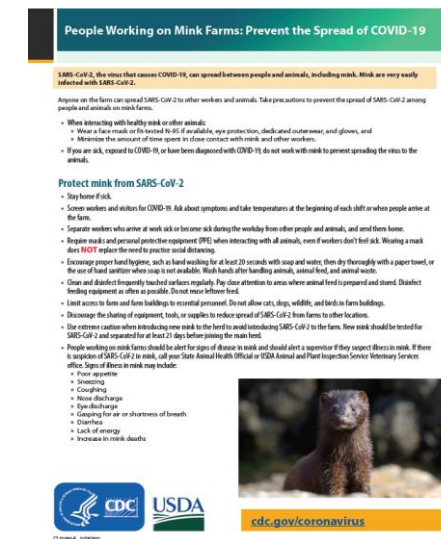
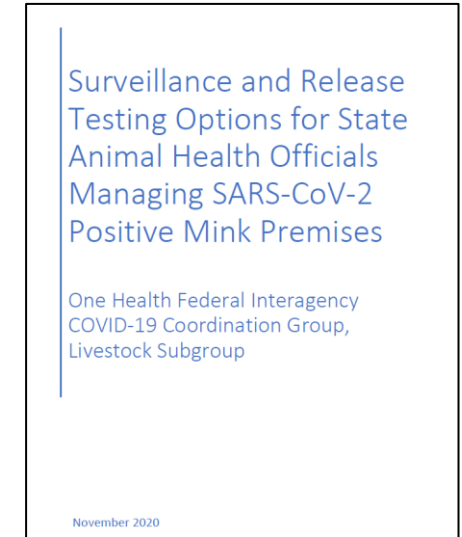
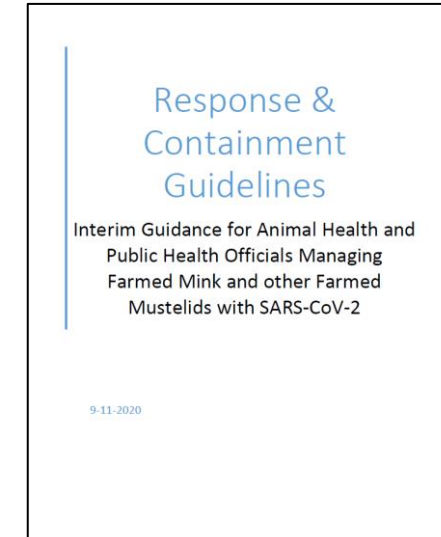
Clean and disinfect using an Environmental Protection Agency (EPA) List N approved disinfectant



Quarantine new mink before introducing to the herd

Mink Farm Resources Developed by OH-FICC and State partners

- Interim SARS-CoV-2 Guidance and Recommendations for Farmed Mink and Other Mustelids
- Response & Containment Guidelines: Interim Guidance for Animal Health and Public Health Officials Managing Farmed Mink and other Farmed Mustelids with SARS-CoV-2
- Safe Mink Pelt Movement from SARS-CoV-2 Quarantined Production Sites
- Surveillance and Release Testing Options for State Animal Health Officials Managing SARS-CoV-2 Positive Mink Premises
- People Working on Mink Farms: Prevent the Spread of COVID-19 Handout



Key Messages on Mink and SARS-CoV-2



- Mink are highly susceptible to SARS-CoV-2
- No evidence that mink are playing a significant role in the spread of SARS-CoV-2 to people
- For most people in the United States, the risk of SARS-CoV-2 infection from animals is low
 - However, there is a higher risk for people working on mink farms
- Mink farms should follow available guidance for farmed mink and other mustelids to prevent introducing SARS-CoV-2 to mink on farms
- Worker safety is critical to protect people and animals on mink farms
- Mink farm workers with COVID-19 should avoid contact with animals, especially mink

CDC Guidance: Pets and Other Animals Landing Page

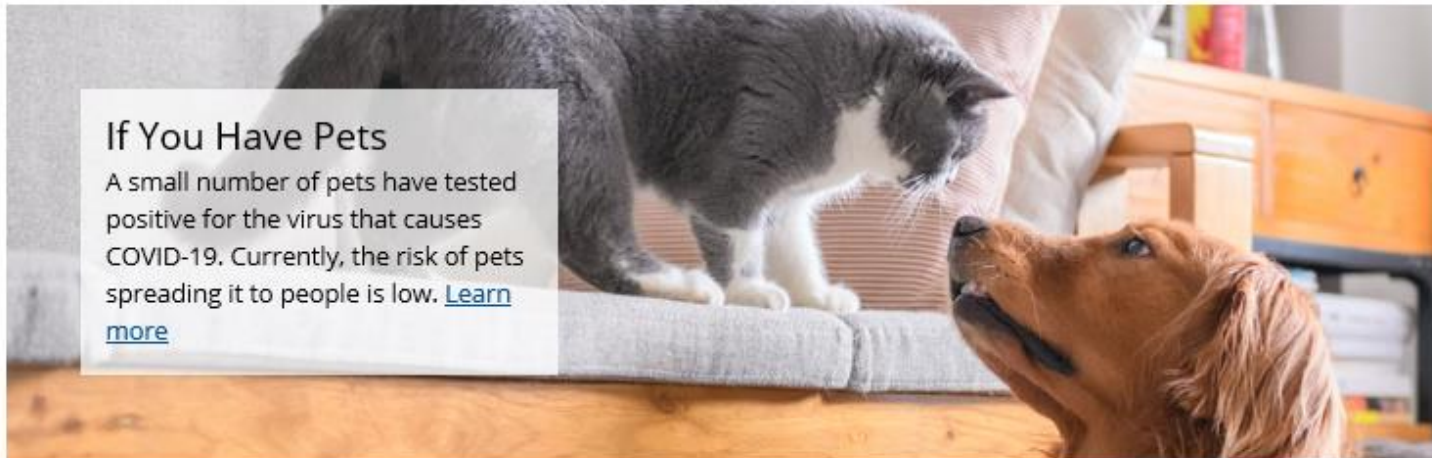
YOUR HEALTH

Pets and Other Animals

Updated June 24, 2020

Languages ▾

Print



If You Have Pets

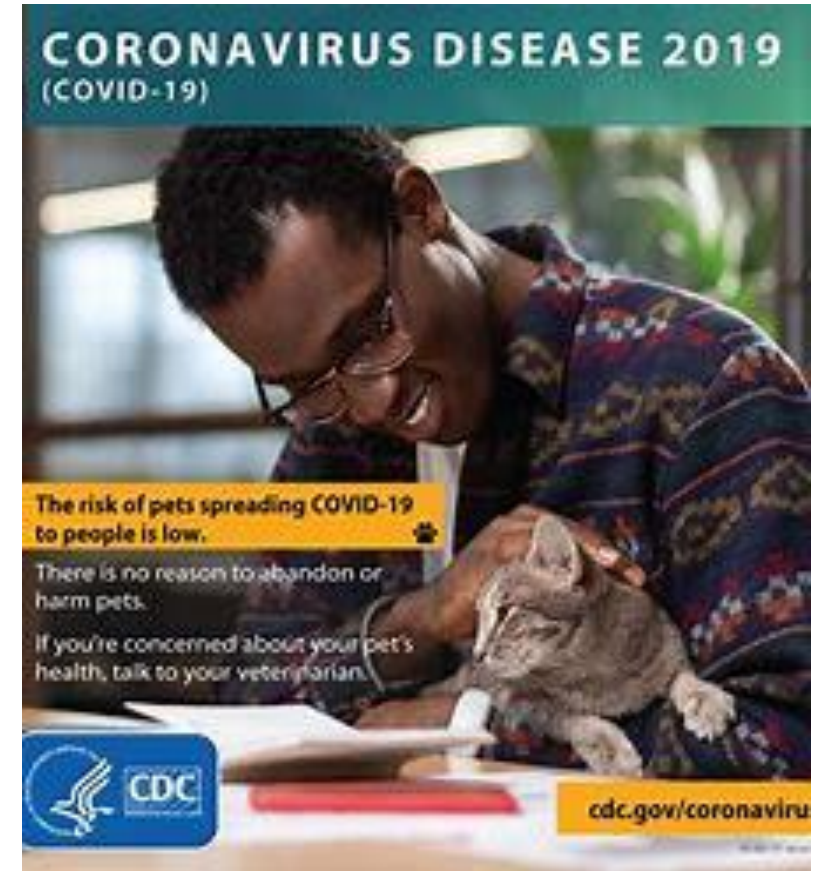
A small number of pets have tested positive for the virus that causes COVID-19. Currently, the risk of pets spreading it to people is low. [Learn more](#)

 [Animals and COVID-19](#)

 [If Your Pet Tests Positive](#)

 [If You Have Pets](#)

 [Handlers of Service & Therapy Animals](#)



www.cdc.gov/coronavirus/2019-ncov/animals/pets-other-animals.html

One Health

