

# Extreme Weather impacts on Agriculture

---

Brad Andres, Alberta Agriculture and Irrigation  
September 2023

# Outline

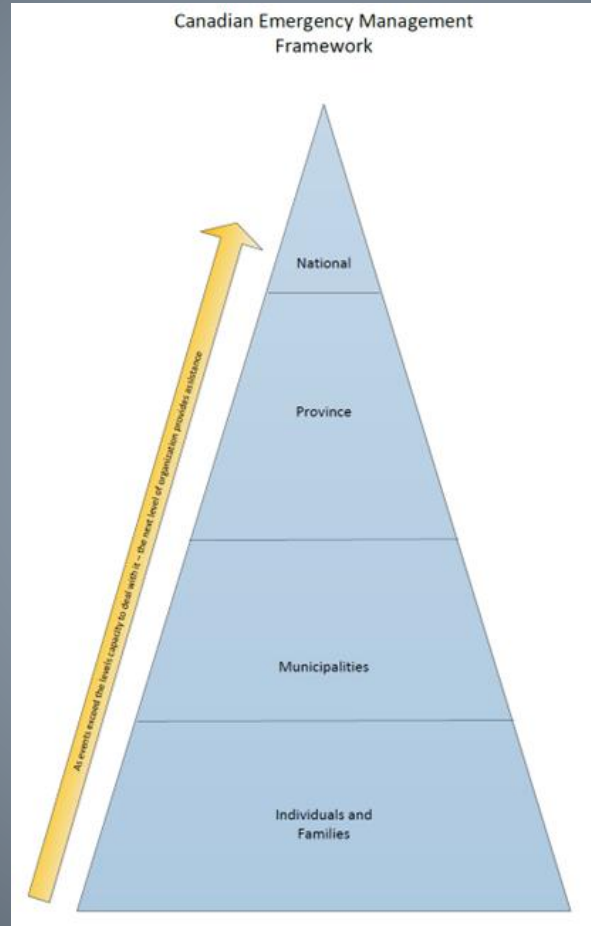
---

1. Background
2. 2023 Weather Events and Impacts
3. Current and potential actions

# Background on Disaster Response in Alberta

---

# Emergency Management System



# Priorities of Emergency Management

---

- Life Safety



- Protect Property



- Preserve Environment

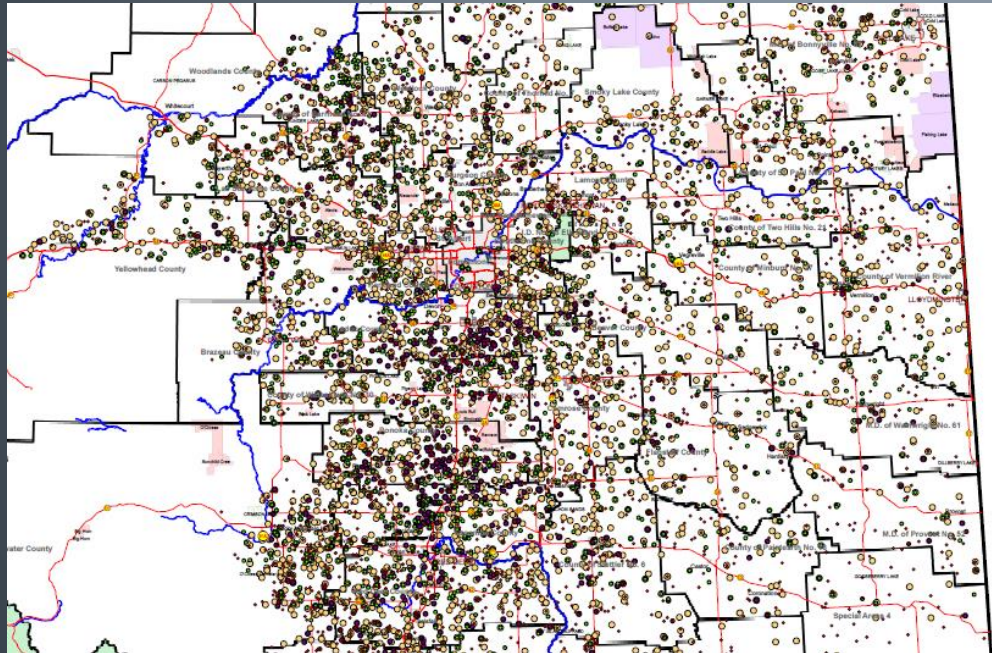


- Protect Economy

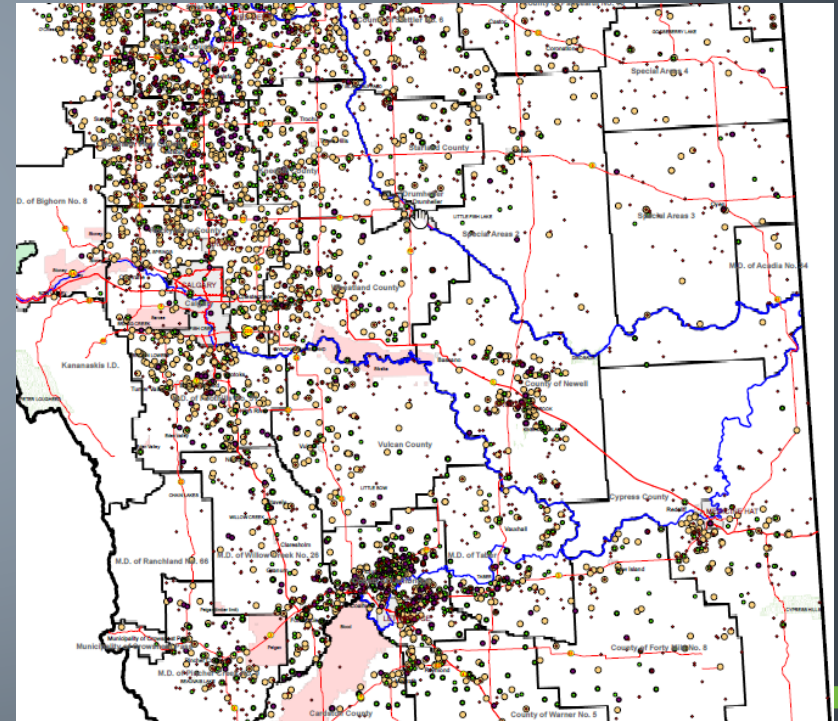


# Provincial Livestock Holdings

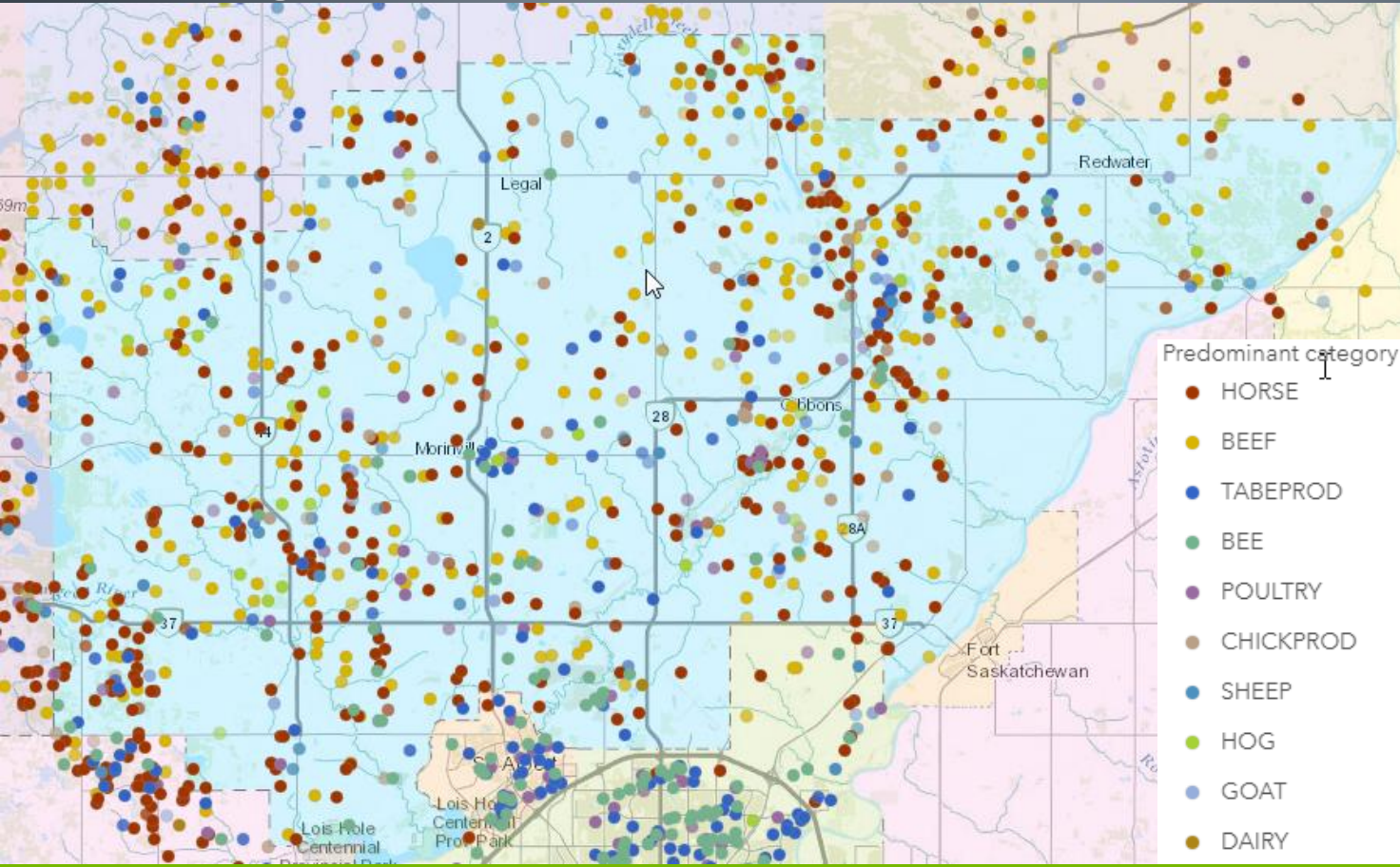
Central Alberta



Southern Alberta



# Sturgeon County – Properties with Animals



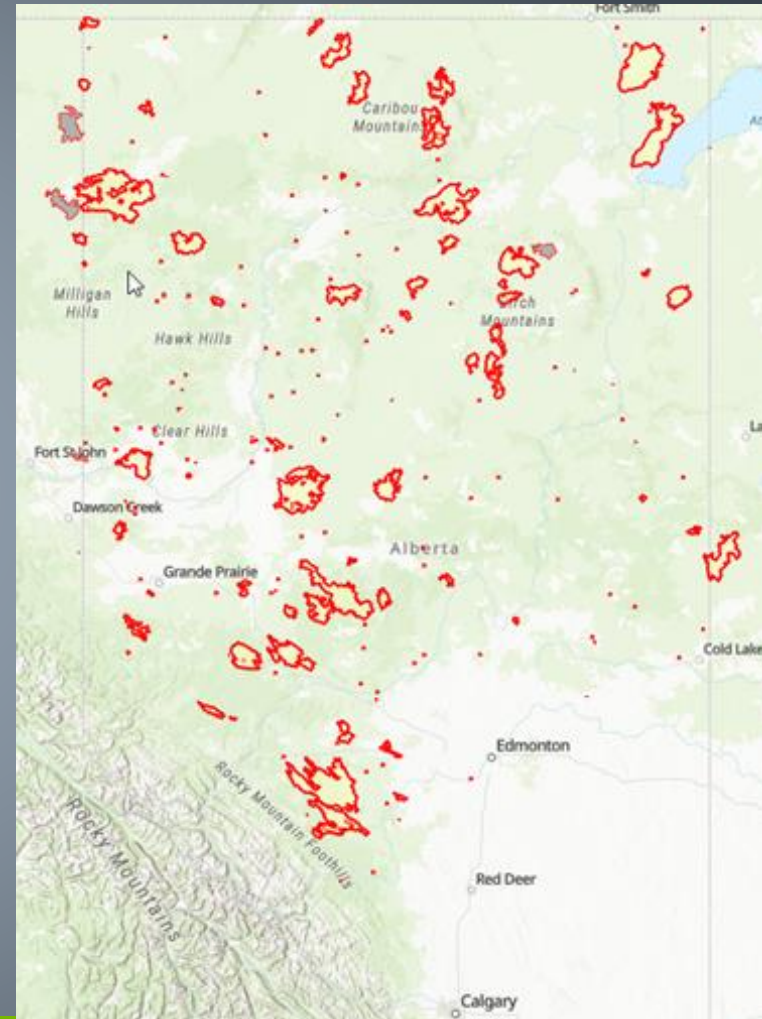
# 2023 Weather Events and Impacts

---

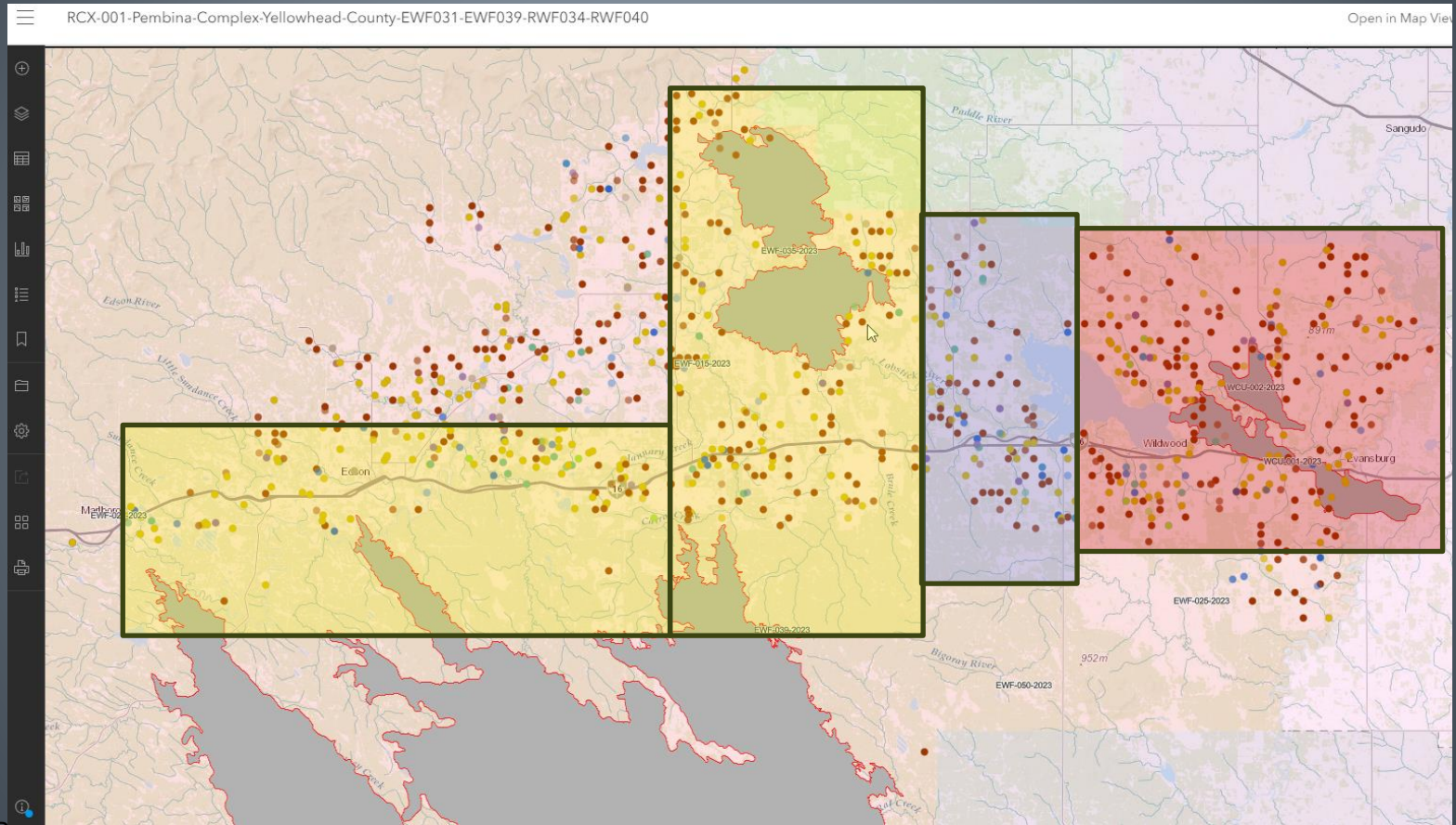


# Spring Wildfires 2023

- First start – Apr 29 west of Edmonton
- May 10
  - 97 Active fires with 6 Fire Complex's
  - 23 Community declared states of emergency
  - 29,000 people evacuated
- Average daytime temp 29C



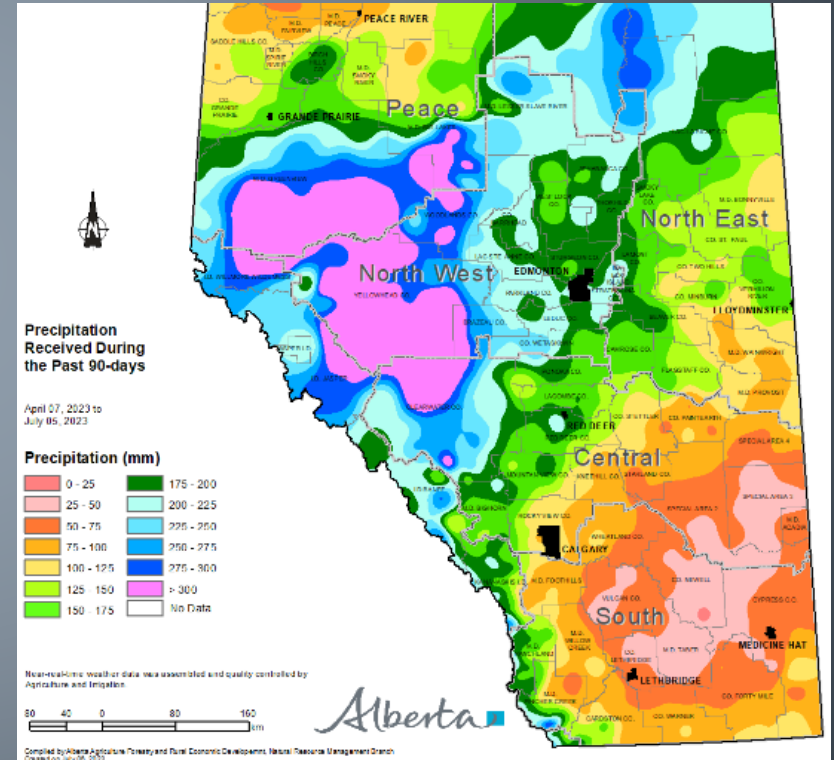
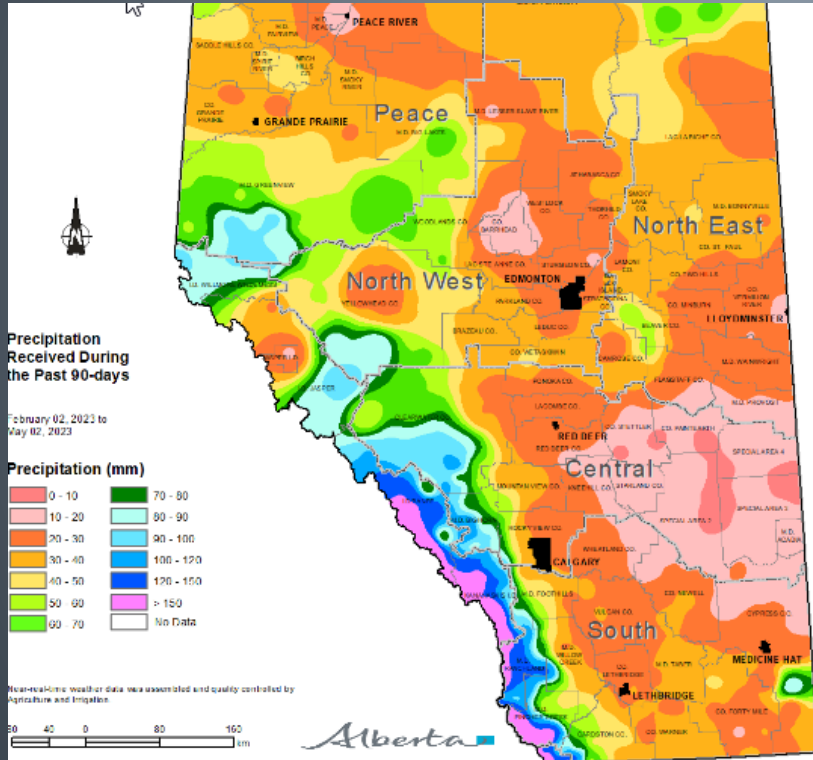
# Agriculture Impacts – Highway 16 Evac Zones



# Spring Flooding

Spring up to May 2 = minimal rain

By July 6 +200mm



# Spring Flooding – June 19, 2023



# Tornado – July 1st

Images from CTV News website



A tornado touched down near Didsbury, Alta., on Canada day, damaging several properties and homes in the area. (Darren Wright)



# Current/Future Work

---

# Farm FireSmart

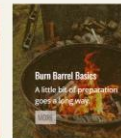
FARMSMART  
RESOURCES FOR REGIONAL PRODUCERS



HOME RESOURCES ▾ NEWS ABOUT

## Accessible, Ag-Focused Fire Safety Info, Resources and Supports

There are so many ways a fire can start on the farm, from electrical failures and lightning strikes to carelessly-handled chemicals, self-combusting hay and rekindled holdover fires. Established fire safety programs are vital to reducing these risks and preventing devastating and costly fires. **Farm FireSmart** is just such a program.



## Get Set for Spring

By integrating some basic FireSmart principles into regular farming and ranching practices, you can reduce the potential threat of a wildfire to start, as well as limit the impact of a wildfire that threatens your property.

### Dry grass, grain fields, hay fields and pastureland:

Reduce dry grass and stubble to prevent a fire from escaping from your property and prevent a wildfire from coming into your yard.

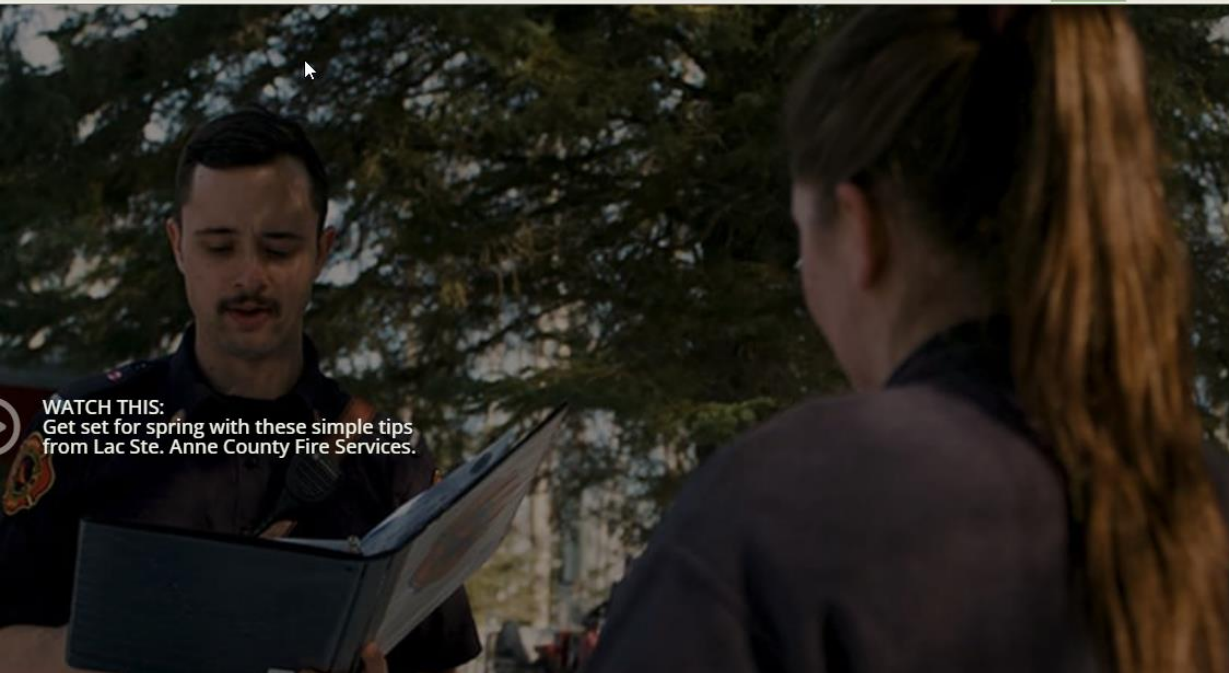
### Fence lines and ditches:

Unmanaged fence lines and ditches can carry intense and rapidly spreading fires into your yard, fields and building sites.

### Feed storage:

No matter how you store bales, once they ignite, the fire spreads quickly and can be difficult to control or extinguish.

WATCH THIS:  
Get set for spring with these simple tips  
from Lac Ste. Anne County Fire Services.



# Emergency Planning and Response Components – *Agriculture challenges in a Community*





# Strategy for Temporary Re-entry Plan

- Allow users to access the evacuated area for justified purposes and to track those same people during the event.
- Permits are required for any person traveling within the closure area. This includes government staff.
- Permits applied for in person, and picked up the next day. Ensures consistency of permitting process and verification of justification.
- Example of conditions for “Landowner – Farmer”
  - *Emergency access to specified site*
  - *Permit valid from 0600-1300hrs on day of issue*
  - *Must use most direct route in/out of evacuation zone*
  - *No overnight stay permitted*

# Summary

- 3400 premises with livestock in Evac Zones
- 275,000 cattle
- 47,000 sheep and goats
- 350,000 poultry
- \*\* only one premises requiring carcass disposal\*\*

# Questions

Brad Andres  
AB Agriculture and Irrigation  
Brad.Andres@gov.ab.ca  
780-638-3204