



# Response



# Resilience

innovating with new technologies

**NFAHW**   
**COUNCIL**

Nov 24<sup>th</sup> 2015 Ottawa CANADA

**UNIVERSITY**  
*of* **GUELPH**

Dr. Theresa Bernardo  
IDEXX Chair, OVC





# November 2015 Paris attacks: Revision history

[View logs for this page](#)

Browse history

From year (and earlier):  From month (and earlier):  Tag filter:

For any version listed below, click on its date to view it. For more help, see [Help:Page history](#) and [External tools: Revision history statistics](#) · [Revision history search](#) · [Edits by user](#) · [Number](#)

(cur) = difference from current version, (prev) = difference from preceding version, **m** = **minor edit**  
([newest](#) | [oldest](#)) View ([newer 50](#) | [older 50](#)) ([20](#) | [50](#) | [100](#) | [250](#) | [500](#))

Compare selected revisions

- [\(cur | prev\)](#)  [22:26, 13 November 2015](#) [John](#) ([talk](#) | [contribs](#)) . . (6,150 bytes) (0) . . (*Undo*)
- [\(cur | prev\)](#)  [22:26, 13 November 2015](#) [Epicgenius](#) ([talk](#) | [contribs](#)) . . (6,150 bytes) (+9)
- [\(cur | prev\)](#)  [22:26, 13 November 2015](#) [Nick-D](#) ([talk](#) | [contribs](#)) . . (6,141 bytes) (-196) . . (*Undo*)
- [\(cur | prev\)](#)  [22:26, 13 November 2015](#) [InflatableSupertrooper](#) ([talk](#) | [contribs](#)) . . (6,337 bytes) (+2)
- [\(cur | prev\)](#)  [22:26, 13 November 2015](#) [Wikimandia](#) ([talk](#) | [contribs](#)) . . (6,337 bytes) (+2)
- [\(cur | prev\)](#)  [22:25, 13 November 2015](#) [John](#) ([talk](#) | [contribs](#)) . . (6,335 bytes) (-5) . . (*Undo*)
- [\(cur | prev\)](#)  [22:25, 13 November 2015](#) [Wikimandia](#) ([talk](#) | [contribs](#)) . . (6,340 bytes) (0)
- [\(cur | prev\)](#)  [22:25, 13 November 2015](#) [81.131.175.245](#) ([talk](#)) . . (6,340 bytes) (0) . . (*Undo*)

- [Main page](#)
- [Contents](#)
- [Featured content](#)
- [Current events](#)
- [Random article](#)
- [Donate to Wikipedia](#)
- [Wikipedia store](#)

- Interaction
  - [Help](#)
  - [About Wikipedia](#)
  - [Community portal](#)
  - [Recent changes](#)
  - [Contact page](#)

- Tools
  - [What links here](#)
  - [Related changes](#)
  - [Atom](#)
  - [Upload file](#)
  - [Special pages](#)
  - [Page information](#)



# November 2015 Paris attacks: Revision history

[View logs for this page](#)

## Browse history

From year (and earlier):  From month (and earlier):  Tag filter:

For any version listed below, click on its date to view it. For more help, see [Help:Page history](#) and [External tools: Revision history statistics](#) · [Revision history search](#) · [Edits by user](#) · [Number](#)

(cur) = difference from current version, (prev) = difference from preceding version, **m** = **minor edit**  
([newest](#) | [oldest](#)) View ([newer 50](#) | [older 50](#)) ([20](#) | [50](#) | [100](#) | [250](#) | [500](#))

### Compare selected revisions

- [\(cur | prev\)](#)  [22:26, 13 November 2015](#) [John](#) ([talk](#) | [contribs](#)) . . (6,150 bytes) (0) . . (*Undo*)
- [\(cur | prev\)](#)  [22:26, 13 November 2015](#) [Epicgenius](#) ([talk](#) | [contribs](#)) . . (6,150 bytes) (+9)
- [\(cur | prev\)](#)  [22:26, 13 November 2015](#) [Nick-D](#) ([talk](#) | [contribs](#)) . . (6,141 bytes) (-196) . . (*Undo*)
- [\(cur | prev\)](#)  [22:26, 13 November 2015](#) [InflatableSupertrooper](#) ([talk](#) | [contribs](#)) . . (6,337 bytes) (+2)
- [\(cur | prev\)](#)  [22:26, 13 November 2015](#) [Wikimandia](#) ([talk](#) | [contribs](#)) . . (6,337 bytes) (+2)
- [\(cur | prev\)](#)  [22:25, 13 November 2015](#) [John](#) ([talk](#) | [contribs](#)) . . (6,335 bytes) (-5) . . (*Undo*)
- [\(cur | prev\)](#)  [22:25, 13 November 2015](#) [Wikimandia](#) ([talk](#) | [contribs](#)) . . (6,340 bytes) (0)
- [\(cur | prev\)](#)  [22:25, 13 November 2015](#) [81.131.175.245](#) ([talk](#)) . . (6,340 bytes) (0) . . (*Undo*)

- [Main page](#)
- [Contents](#)
- [Featured content](#)
- [Current events](#)
- [Random article](#)
- [Donate to Wikipedia](#)
- [Wikipedia store](#)

- Interaction
  - [Help](#)
  - [About Wikipedia](#)
  - [Community portal](#)
  - [Recent changes](#)
  - [Contact page](#)

- Tools
  - [What links here](#)
  - [Related changes](#)
  - [Atom](#)
  - [Upload file](#)
  - [Special pages](#)
  - [Page information](#)



# WikiHistory

Statistics for

## November 2015 Paris attacks

### GENERAL INFORMATION

Edits total	<b>2690</b>
Minor edits	499 (18.6 %)
Anonymous edits	170 (6.3 %)
Different users	569
Anonymous users	93 (16.3 %)
Edits per user	4.73
First edit	November 13 2015 21:23 (one day ago) User: <a href="#">Gareth E Kegg</a>
Last edit	November 15 2015 16:25 (one minute ago)

# WikiHistory

Statistics for

## November 2015 Paris attacks

### GENERAL INFORMATION

Edits total	<b>2690</b>
Minor edits	499 (18.6 %)
Anonymous edits	170 (6.3 %)
Different users	569
Anonymous users	93 (16.3 %)
Edits per user	4.73
First edit	November 13 2015 21:23 (one day ago) User: <a href="#">Gareth E Kegg</a>
Last edit	November 15 2015 16:25 (one minute ago)

# References

---

## Explanatory notes

## Citations

1. <sup>^</sup> ["Paris attacks: More than 100 killed in gunfire and blasts, French media say"](#) . CNN. 14 November 2015. Retrieved 14 November 2015.
2. <sup>^</sup> [a b c d e](#) Claire Phipps (15 November 2015). ["Paris attacker named as Ismail Omar Mostefai as investigation continues – live updates"](#) . *The Guardian*. Retrieved 15 November 2015.
3. <sup>^</sup> [a b c d e f g h](#) ["Paris attacks updates"](#) . BBC News.
4. <sup>^</sup> ["Attaques à Paris : ce que l'on sait des attentats qui ont fait au moins 128 morts"](#)  (in French). Le Monde.fr. Le Monde.fr. Retrieved 14 November 2015.
5. <sup>^</sup> [a b](#) ["ISIS claims responsibility of Paris attacks"](#) . CNN. Retrieved 14 November 2015.
6. <sup>^</sup> [a b c d e f g h i j k l m n o p q r](#) Randolph, Eric and Simon Valmary (13 November 2015). ["More than 120 people killed in Paris 'terror' attacks"](#) . *Yahoo! News*. *Agence France-Presse*. Archived from [the original](#)  on 14 November 2015. Retrieved 14 November 2015.

# References

---

## Explanatory notes

## Citations

1. <sup>^</sup> ["Paris attacks: More than 100 killed in gunfire and blasts, French media say"](#) . CNN. 14 November 2015. Retrieved 14 November 2015.
2. <sup>^</sup> [a b c d e](#) Claire Phipps (15 November 2015). ["Paris attacker named as Ismail Omar Mostefai as investigation continues – live updates"](#) . *The Guardian*. Retrieved 15 November 2015.
3. <sup>^</sup> [a b c d e f g h](#) ["Paris attacks updates"](#) . BBC News.
4. <sup>^</sup> ["Attaques à Paris : ce que l'on sait des attentats qui ont fait au moins 128 morts"](#)  (in French). Le Monde.fr. Le Monde.fr. Retrieved 14 November 2015.
5. <sup>^</sup> [a b](#) ["ISIS claims responsibility of Paris attacks"](#) . CNN. Retrieved 14 November 2015.
6. <sup>^</sup> [a b c d e f g h i j k l m n o p q r](#) Randolph, Eric and Simon Valmary (13 November 2015). ["More than 120 people killed in Paris 'terror' attacks"](#) . *Yahoo! News*. *Agence France-Presse*. Archived from [the original](#)  on 14 November 2015. Retrieved 14 November 2015.





July 2005  
**London**





**WIKIPEDIA**  
The Free Encyclopedia

navigation

- [Main Page](#)
- [Community portal](#)
- [Current events](#)
- [Recent changes](#)
- [Random page](#)
- [Help / Contact us](#)
- [Donations](#)

search

toolbox

All active users are invited to [vote](#) in the

# 7 July 2005 London bombings

From Wikipedia, the free encyclopedia.

[Revision history](#)

(Latest | [Earliest](#)) View (previous 50) ([next 50](#)) ([20](#) | [50](#) | [100](#) |

Legend: (cur) = difference with current version, (last) = differe

Compare selected versions

- |   |  |  |                                   |   |
|---|--|--|-----------------------------------|---|
| ■ | <a href="#">(cur)</a> <a href="#">(last)</a> |  | <a href="#">7 July 2005 16:01</a> | <a href="#">LeeHunter</a> <i>m</i> ( <i>f</i> ) |
| ■ | <a href="#">(cur)</a> <a href="#">(last)</a> |  | <a href="#">7 July 2005 16:01</a> | <a href="#">lanManka</a> ( <i>→</i> )           |
| ■ | <a href="#">(cur)</a> <a href="#">(last)</a> |  | <a href="#">7 July 2005 16:00</a> | <a href="#">62.252.192.8</a>                    |
| ■ | <a href="#">(cur)</a> <a href="#">(last)</a> |  | <a href="#">7 July 2005 15:58</a> | <a href="#">ContiE</a> ( <i>rm pag</i> )        |
| ■ | <a href="#">(cur)</a> <a href="#">(last)</a> |  | <a href="#">7 July 2005 15:54</a> | <a href="#">12.106.100.92</a>                   |
| ■ | <a href="#">(cur)</a> <a href="#">(last)</a> |  | <a href="#">7 July 2005 15:54</a> | <a href="#">Orbhead</a>                         |
| ■ | <a href="#">(cur)</a> <a href="#">(last)</a> |  | <a href="#">7 July 2005 15:54</a> | <a href="#">220.233.67.113</a>                  |



**WIKIPEDIA**  
The Free Encyclopedia

[Main page](#)  
[Contents](#)  
[Featured content](#)  
[Current events](#)  
[Random article](#)  
[Donate to Wikipedia](#)  
[Wikipedia store](#)

Interaction  
[Help](#)  
[About Wikipedia](#)  
[Community portal](#)  
[Recent changes](#)  
[Contact page](#)

Tools  
[What links here](#)  
[Related changes](#)  
[Upload file](#)  
[Special pages](#)  
[Permanent link](#)

Article [Talk](#)

[Read](#) [Edit](#) [View history](#)

## 2015 United States H5N2 outbreak

From Wikipedia, the free encyclopedia

In 2015, an **outbreak of avian influenza subtype H5N2** was identified in a series of [chicken](#) and [turkey farming](#) operations in the [Midwestern](#) region of the [United States](#). As of May 30, more than 43 million birds in 15 states had been destroyed as a result of the outbreak, including nearly 30 million in [Iowa](#) alone, the nation's largest egg producer. In the Midwestern U.S., the average price of eggs had increased 120% between April 22 and May 30. The effects however were seen nationwide, with prices in [California](#) up 71% in the same timeframe.<sup>[1]</sup>

The virus was first identified in [Minnesota](#) in early March. Prior to April 20, it affected commercial turkey farms almost exclusively, in the states of [Arkansas](#), [Iowa](#), [Missouri](#), [North Dakota](#), [South Dakota](#), [Wisconsin](#), and at 28 farms in Minnesota, where the virus was initially identified.

Migratory waterfowl are assumed to have brought the disease to the Midwest, but how it made its way into poultry barns is undetermined.<sup>[2]</sup> No human cases have been reported, and human infection is almost impossible.

### Contents [\[hide\]](#)

- [Spread to hen farms](#)
  - [1.1 Table of infections](#)
- [Control](#)
- [References](#)
- [External link](#)



**WIKIPEDIA**  
The Free Encyclopedia

[Main page](#)  
[Contents](#)  
[Featured content](#)  
[Current events](#)  
[Random article](#)  
[Donate to Wikipedia](#)  
[Wikipedia store](#)

Interaction  
[Help](#)  
[About Wikipedia](#)  
[Community portal](#)  
[Recent changes](#)  
[Contact page](#)

Tools  
[What links here](#)  
[Related changes](#)  
[Upload file](#)  
[Special pages](#)  
[Permanent link](#)

Article [Talk](#)

[Read](#) [Edit](#) [View history](#)

## 2015 United States H5N2 outbreak

From Wikipedia, the free encyclopedia

In 2015, an **outbreak of avian influenza subtype H5N2** was identified in a series of [chicken](#) and [turkey farming](#) operations in the [Midwestern](#) region of the [United States](#). As of May 30, more than 43 million birds in 15 states had been destroyed as a result of the outbreak, including nearly 30 million in [Iowa](#) alone, the nation's largest egg producer. In the Midwestern U.S., the average price of eggs had increased 120% between April 22 and May 30. The effects however were seen nationwide, with prices in [California](#) up 71% in the same timeframe.<sup>[1]</sup>

The virus was first identified in [Minnesota](#) in early March. Prior to April 20, it affected commercial turkey farms almost exclusively, in the states of [Arkansas](#), [Iowa](#), [Missouri](#), [North Dakota](#), [South Dakota](#), [Wisconsin](#), and at 28 farms in Minnesota, where the virus was initially identified.

Migratory waterfowl are assumed to have brought the disease to the Midwest, but how it made its way into poultry barns is undetermined.<sup>[2]</sup> No human cases have been reported, and human infection is almost impossible.

### Contents [\[hide\]](#)

- [Spread to hen farms](#)
  - [1.1 Table of infections](#)
- [Control](#)
- [References](#)
- [External link](#)



## Table of infections  [ [edit](#) ]

This table shows large bird farm infections during the 2015 outbreak. All birds affected are in thousands. The table is sorted by the number of birds affected in descending order. While 205 total infections were confirmed through June 1, only larger outbreaks are shown in this table.

Date detected <span>↕</span>	Location <span>↕</span>	Birds affected <span>↕</span>	Type <span>↕</span>
March 27	<a href="#">Lac Qui Parle County, Minnesota</a>	66,000	Turkeys
April 1	<a href="#">Beadle County, South Dakota</a>	50,600	Turkeys
April 2	<a href="#">Stearns County, Minnesota</a>	71,000	Turkeys
April 4	Stearns County, Minnesota	76,000	Turkeys
April 7	<a href="#">Meeker County, Minnesota</a>	310,000	Turkeys
April 8	<a href="#">Kingsbury County, South Dakota</a>	71,900	Turkeys
April 9	<a href="#">Lyon County, Minnesota</a>	66,000	Turkeys
April 10	<a href="#">McPherson County, South Dakota</a>	55,200	Turkeys
April 10	<a href="#">McCook County, South Dakota</a>	54,700	Turkeys
April 11	<a href="#">Jefferson County, Wisconsin</a>	189,100	Chickens
April 13	<a href="#">Swift County, Minnesota</a>	160,000	Turkeys



Paris Attacks Push Facebook, Twitter Users to New Tools



T-Mobile's Latest Move Quietly Brings Price Increases, Data Limit



FanDuel to Stop Accepting New Deposits from New York



## TECH

# Paris Attacks Push Facebook, Twitter Users to New Tools

Social-media companies' 'Safety Check,' news-curation tab help users share news, statuses

By **DEEPA SEETHARAMAN**

12 COMMENTS

Updated Nov. 14, 2015 12:00 a.m. ET

Social-media companies **Facebook** Inc. and **Twitter** Inc. provided new tools allowing people around the world to track and discuss the violent attacks in Paris on Friday with unprecedented speed and





## Paris Terror Attacks

### FACEBOOK SAFETY CHECK

Quickly find and connect with friends in the area. Mark them safe if you know they're OK.

Are you in the affected area?  
Yes, let my friends know.

All friends in area (17) ↕

Search your friends



[Redacted Name]

Marked himself safe · 40 minutes ago

Comment

✓ SAFE



[Redacted Name]

Marked safe by F [Redacted Name] · 8 minutes ago

Comment · 10

✓ SAFE





# 2005 Hurricane Katrina



# Notices were posted in hundreds of **online forums**

<http://www.blogherald.com/2005/08/31/hurricane-katrina-missing-persons-appeal/>

I'm looking for my daddy, Kenrick Bennett !  
Last time seen was Aug 28,2005 please call  
me anybody. Also Brandon Gilmore and  
family, Je'von Baker, and her family. My  
cell is (504)329-1779 my location is  
Florida. Cell is working please call  
anybody !!!

LOOKING FOR MY SON DAVID CASLER WIFE MARI AND  
KIDS ..... PLEASE CALL US AT 850 777-7579  
CELL .....

# Notices were posted in hundreds of online forums

<http://www.blogherald.com/2005/08/31/hurricane-katrina-missing-persons-appeal/>

I'm looking for my daddy, Kenrick Bennett !  
Last time seen was Aug 28, 2005 please call  
me anybody. Also Brandon Gilmore and  
family, Je'veon Baker, and her family. My  
cell is (504) 329-1779 my location is  
Florida. Cell is working please call  
anybody !!!

LOOKING FOR MY SON DAVID CASLER WIFE MARI AND  
KIDS ..... PLEASE CALL US AT 850 777-7579  
CELL .....



# April 2009: **Pandemic H1N1**

**Pan American  
Health  
Organization  
(UN/WHO/PAHO)**  
Regional office of  
the World Health  
Organization

# Web conferencing

## Three languages and interpretation



**PAHO Regional Office – Task force**

**Ministers of Health**



**All PAHO Country Offices and Centers**



# Haiti Quake





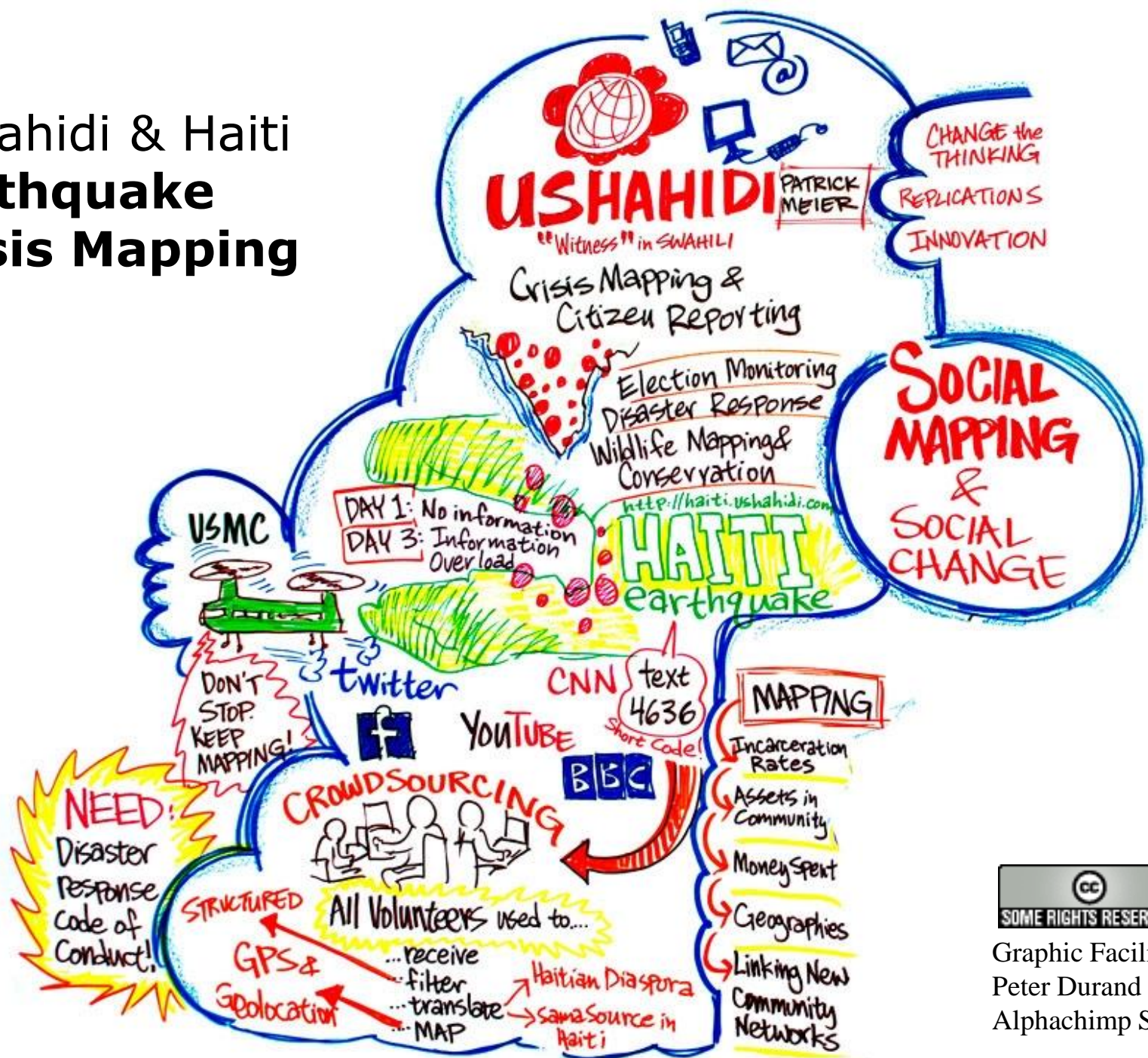








# Ushahidi & Haiti Earthquake Crisis Mapping



Graphic Facilitation by  
Peter Durand  
Alphachimp Studio



# People finder

[Person Finder: Haiti Earthquake](#)

[English](#) | [Français](#) | [Kreyòl](#) | [Español](#)

What is your situation?

<a href="#">I'm looking for someone</a>	<a href="#">I have information about someone</a>
---	--

Currently tracking about 55200 records.

PLEASE NOTE: All data entered will be available to the public and viewable and usable by anyone. Google does not review or verify the accuracy of this data.

[Embed this tool on your site](#) - [Developers](#) - [Terms of Service](#)

powered by 

# Comunite OpenStreetMap de Haiti



**MMRC responding to Cholera outbreak in Borgne, Haiti**

**MMRCGlobal**

6 videos

Subscribe

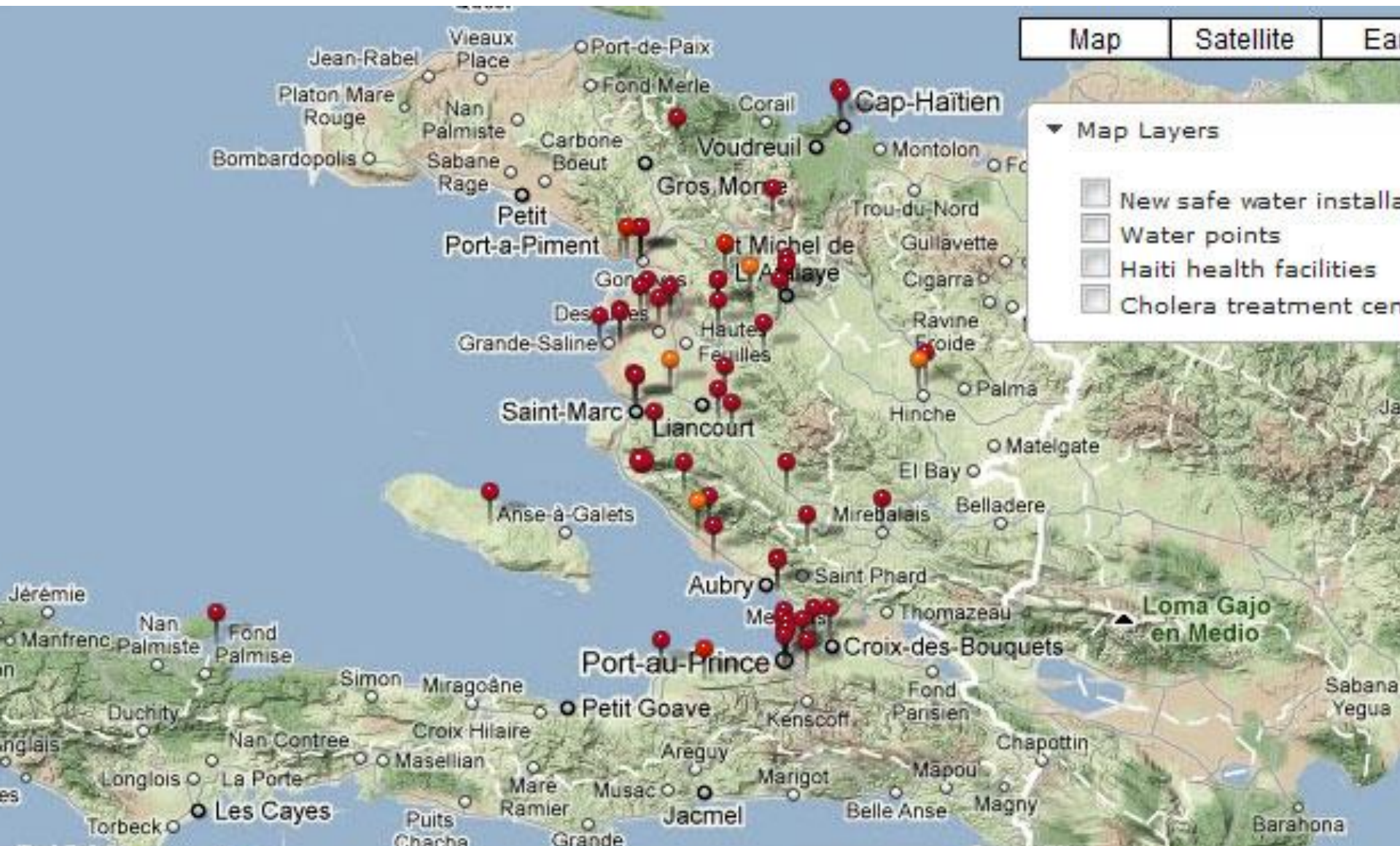


**CTC in Borgne, Day 1 of MMRC Response**

[www.mmrcglobal.org](http://www.mmrcglobal.org)



# HealthMap Haiti





# Haiti Epidemic Advisory System

to haiti-epidemic

Nov 20

Just received word from Borgne, Haiti in the north that they are **overwhelmed** with cholera cases, including fatalities. It is a **very remote** region in the mountains and there is only a small community hospital backed by a small NGO that I usually work with, but I am presently in Port au Prince. They have **no resources**. They need cots, IV fluids, and ORS. They claim to have not much support. **Can anyone help?**

# MMRC responding to Cholera outbreak in Borgne, Haiti

MMRCGlobal

6 videos

Subscribe



# MMRC responding to Cholera outbreak in Borgne, Haiti

MMRCGlobal

6 videos

Subscribe



Villagers Carrying 1200 Kilos of Medical Supplies

[www.mmrcglobal.org](http://www.mmrcglobal.org)





**Coast Guard/National Guard**  
**#X24 IS A TEST, NOT REAL**  
[link] CNN.com Earthquake  
strikes coast of Southern and Baja  
California <http://bit.ly/Exer24> 1



THIS IMAGE IS A SIMULATION  
THIS IS NOT AN ACTUAL EVENT

CETTE IMAGE EST UNE SIMULATION  
CECI N'EST PAS UN EVENEMENT ACTUEL

ESTA IMAGEN ES UNA SIMULACION  
ESTO NO ES UN EVENTO ACTUAL







**X 24**  
EXERCISE 24

THIS IS A SIMULATION  
THIS IS NOT AN ACTUAL EVENT

CECI EST UNE SIMULATION  
CECI N'EST PAS UN EVENEMENT ACTUEL

ESTOS ES UN SIMULACRO  
ESTO NO ES UN EVENTO REAL

**X 24**  
EXERCISE 24











## Person Finder: 2011 Japan Earthquake

[日本語](#) | [English](#) | [한국어](#) | [中文 \(简体\)](#) | [中文 \(繁體\)](#)

What is your situation?

[I'm looking for  
someone](#)

[I have  
information about  
someone](#)

Currently tracking about 7200 records.

PLEASE NOTE: All data entered will be available to the public and viewable and usable by anyone. Google does not review or verify the accuracy of this data.

[Embed this tool on your site](#) - [Developers](#) - [Terms of Service](#)

powered by  




## Person Finder (消息情報): 2011 日本地震

日本語 | [English](#) | [한국어](#) | [中文 \(简体\)](#) | [中文 \(繁體\)](#)

### 識別情報

#### 名前

姓: **Sakamoto**  
名: **Jeff**

#### 身体の特徴

性別:  
年齢:

#### 自宅住所

町名:  
近隣の場所:  
市: **Okemos**  
都道府県: **Michigan**  
郵便番号: **48864**  
出身国:

### その他の情報

description:  
US citizen with family in Northern  
Japan on a visit

### この記録の情報源

情報提供者の名前: **Leo Kempel**  
情報提供者の電話番号:  
情報提供者のメールアドレス: [\(クリックして表示\)](#)

### この人の状況

投稿者: **Theresa Lernihan** 日付: 2011-03-11 時刻: 23:30 UTC [ス](#)

[パムを報告](#)

メール: [\(クリックして表示\)](#)

電話: [\(クリックして表示\)](#)

Deanna Jeff call as soon as you can  
Love  
Mom

状況: [情報を探している](#)

ID: japan.person-finder.appspot.com/note.2615549

投稿者: **laleah fernandez** 日付: 2011-03-12 時刻: 01:48 UTC [ス](#)

[パムを報告](#)

メール: [\(クリックして表示\)](#)

We just want to hear you are all ok. Jhovonne and I are taking some comfort in the fact that your family is composed of 5 of the most exceptional people we know. In our hearts and prayers.

状況: [情報を探している](#)

ID: japan.person-finder.appspot.com/note.2585905

投稿者: **Valerie Lernihan** 日付: 2011-03-12 時刻: 07:59 UTC [ス](#)

[パムを報告](#)

メール: [\(クリックして表示\)](#)

Good news! The whole family is safe. Deanna just called me, and they are waiting for a plane out of Tokyo.

地図を検索

ルート・乗換案内 マイマップ

マイマップに保存

RSS Google Earth で表示 印刷 送信 リンク

### 東京都内避難場所

東京都内における避難場所、休憩場所

238,261ビュー - 一般公開

3月11日作成 - 1分前更新

投稿: Takuma - 共同編集者 5人

★★★★ 121件の評価 - コメント 88

#### 築地本願寺

@ssh\_yuzen 築地本願寺では会館を開放しております。「暖かい場所」「お茶」「NHKの中継」「トイレ」「授乳室」「ミルク用のお湯」をご用意いたしております。また、職員の手作りになりますが、「おにぎり」もお配りしております。@waiqueure 23:28続報 築地本願寺では会館を帰宅困難な方のために開放しておりますが、食糧が少なくなりました。築地近辺で差し入れていただける方がおられましたら...

#### 私立立教大学

@emichinpapa 立教大学は一晩中教室を開放することを決定しました！宿泊可能です！大学関係者以外の方ももちろん利用可能なので、お困りの方は立教大学までいらして下さい！僕宛にリプライいただければ、なにかお困りの際はお手伝いします！

#### 青山学院大学 青山キャンパス

@kanakoga 青山学院は本堂以外の場所も開放したそうです。2011/03/11 22:44時点 @syukatsu2012: 青山学院大学もういっぱいであれませぬ 2011/03/11 23:09時点

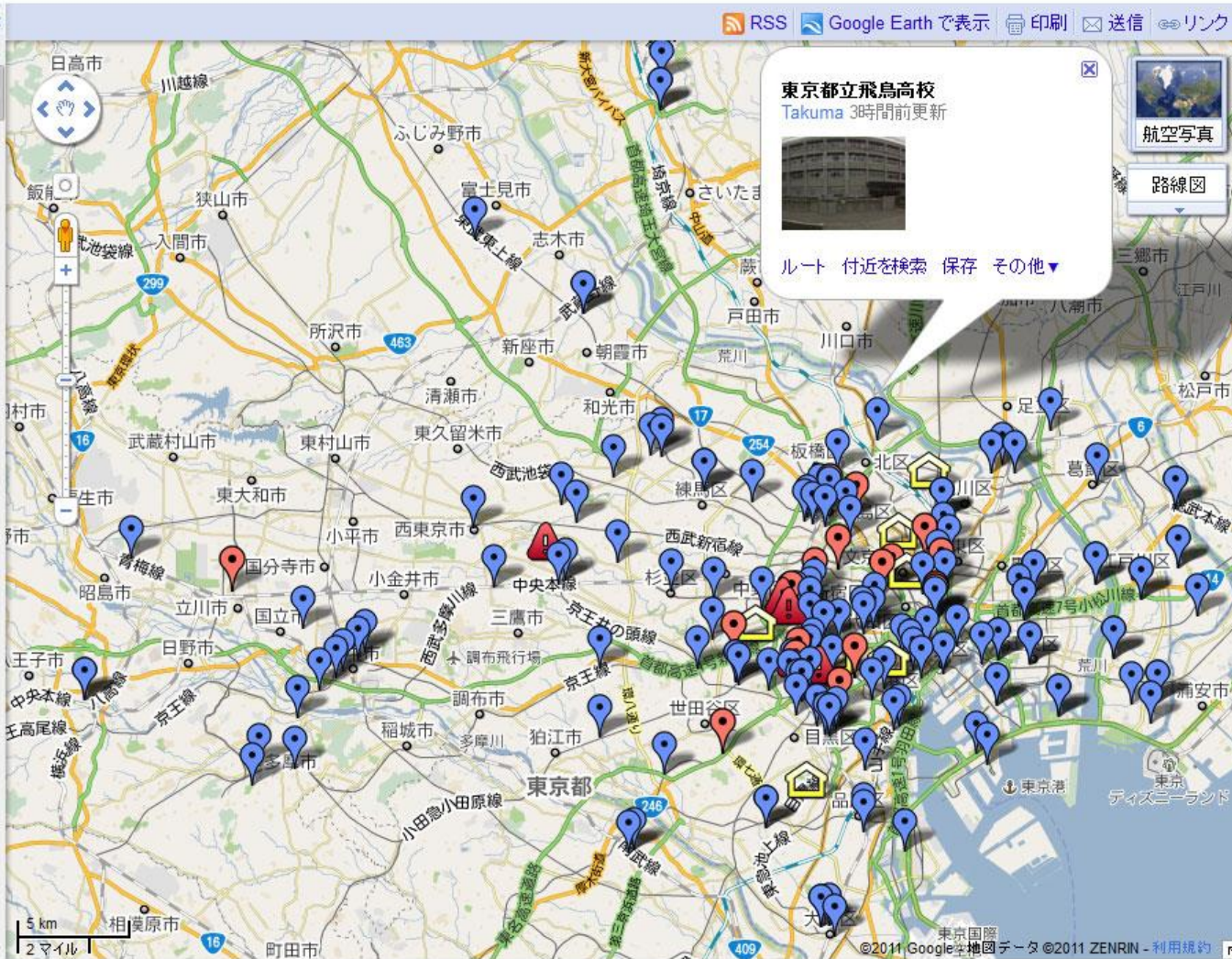
#### 横浜スタジアム

#### 私立上智大学

#### 明治大学 駿河台キャンパス

#### 西東京市役所 田無公民館

#### 東京大学駒場キャンパス



**東京都立飛鳥高校**  
Takuma 3時間前更新



航空写真  
路線図

ルート 付近を検索 保存 その他 ▾























Keep me logged in[Sign Up](#)

Facebook helps you connect and share with the people in your life.

[Wall](#)[Info](#)[WELCOME](#)[Notes](#)[Photos](#)[Discussions](#)[PicBadges](#)[Questions](#)

## About

We are a coalition created to positively support rescue efforts for the ani...

[More](#)

## Japan Earthquake Animal Rescue and Support

[Like](#)

Non-Profit Organization

[Wall](#)

### Japan Earthquake Animal Rescue and Support

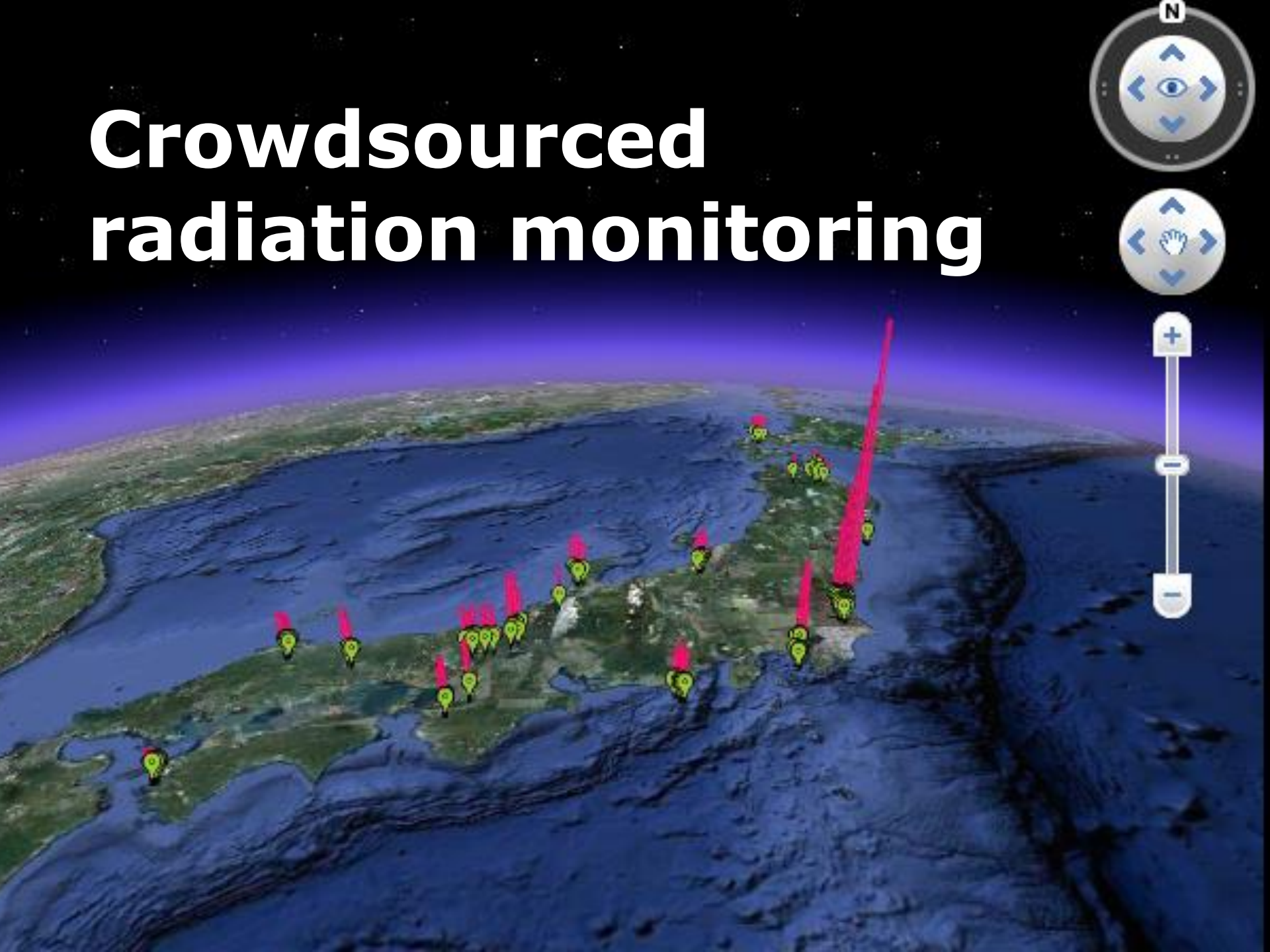
One of our volunteers shared this photo with us:

This kitty seemed to be waiting for someone to come home. When she realized that I was really there, she literally ran up to me and jumped into my arms! I am so glad that I was combing this particular area for kitties, as the house was set back from the road and we may never have seen her. She is emaciated and suffering from an upper respiratory infection, but ate non-stop after joining me on my lap in the van; she is now receiving medical attention at the shelter in Niigata.





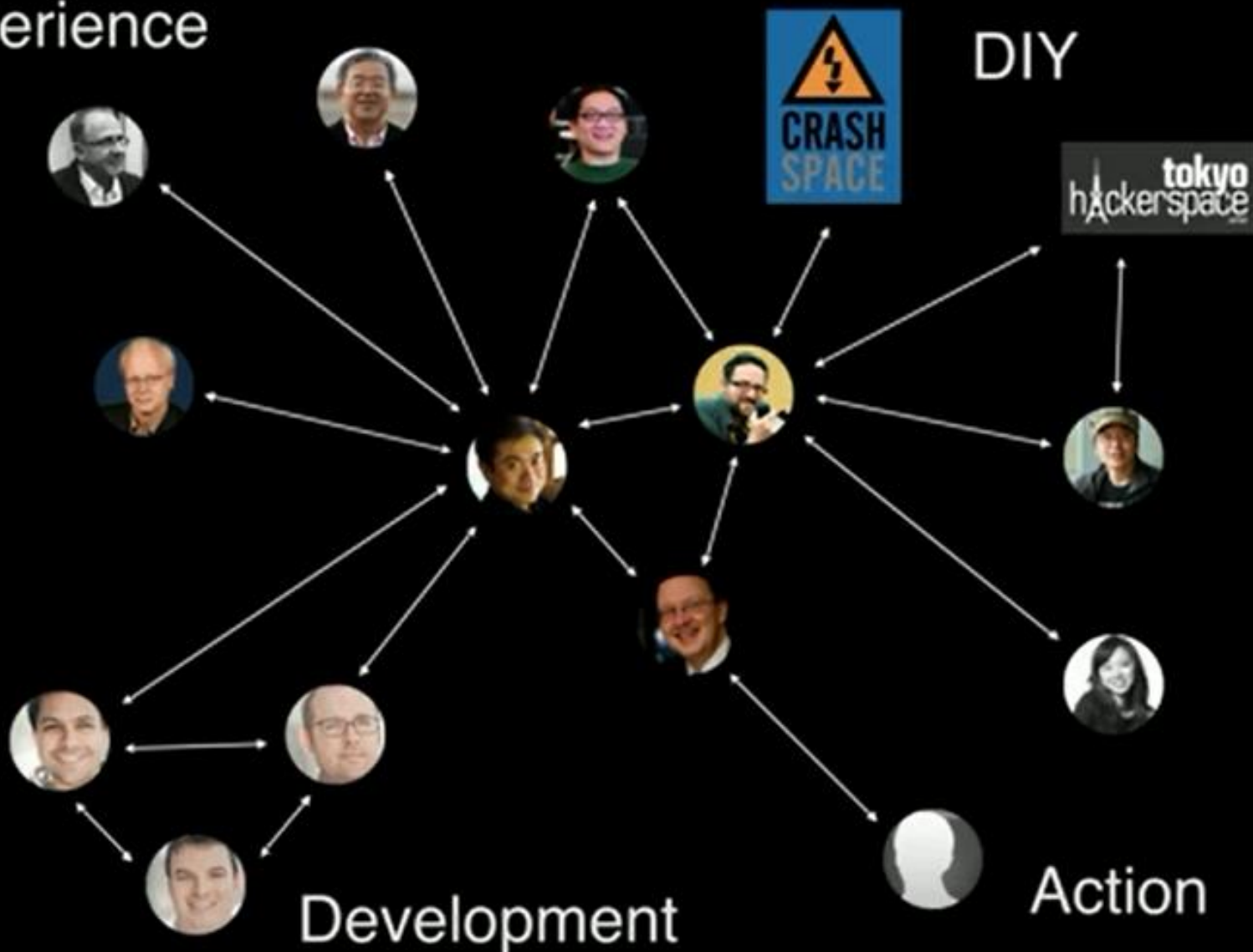
# Crowdsourced radiation monitoring







Experience



# The Use of Social Media for Disaster Recovery

*Lessons learned while creating and managing “Joplin Tornado Info” (2011) on Facebook and further implemented with “Branson Tornado Info” (2012), Missouri Flood Info (2011-2012) “US Tornado Info (2012) and others.*



**JOPLIN**  
**TORNADO.INFO**

The logo features the text "JOPLIN" in a large, bold, white sans-serif font, with "TORNADO.INFO" in a smaller, bold, white sans-serif font below it. The background is a solid black shape that tapers to the right. At the bottom of the black shape, there are stylized hands in blue, red, and orange.

**Missouri**  
**Flood Info**

The logo consists of the text "Missouri" in a bold, black sans-serif font, with "Flood Info" in a larger, bold, black sans-serif font below it. The text is set against a white background with a blue horizontal bar at the top and blue wavy lines at the bottom.





# FEMA

## Welcome to IS-042 Social Media in Emergency Management



[Begin the Training](#)



**Lucas Kavner** [Become a fan](#)  
lucas.kavner@huffingtonpost.com



Follow

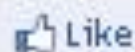


Like

1.5k

# Hurricane Sandy: Red Cross, Other Relief Organizations Expand Reach Through Social Media

Posted: 10/30/2012 5:49 pm EDT Updated: 10/30/2012 5:56 pm EDT



Like



5 people like this. Be the first of your friends.





# #Sandy

Important information and updates about Hurricane Sandy



## Tweet à propos de #Sandy

#Sandy

## Utilisateurs suggérés



**FEMA**  @fema

This channel provides FEMA missi...

FEMA

Suivre



**NWS**  @usNWSgov

NOAA's National Weather Service ...

Suivre



**NOAA**  @NOAA

NOAA provides science, service, a...

Suivre

## Tweets

Afficher tous les Tweets



**New York Daily News** @nydailynews

1 min

The latest update on New York's damaged transportation systems from @kinynews [bit.ly/SkKyvM](http://bit.ly/SkKyvM) #Sandy

Ouvrir



**WNYC Radio** @WNYC

1 min

Elmo, resident of Sesame Street, talks to kids about Hurricane Sandy on the @BrianLehrer Show. Hear it here: [wnyc.org/shows/bl/2012/...](http://wnyc.org/shows/bl/2012/)

Ouvrir



**Mike Bloomberg** @MikeBloomberg

1 min

Most recent report has nearly 750,000 New Yorkers without power. Power could be out for at least 2-3 days, maybe longer. #SandyNYC

Ouvrir



**Governor Christie** @GovChristie

4h

The Turnpike is now closed between Woodbridge and Newark. Please stay off the roads and out of harms way.

Expand



**Governor Christie** @GovChristie

5h

If conditions are not safe on Wednesday for Trick or Treating, I will sign an Executive Order rescheduling #Halloween.

Expand



**Governor Christie** @GovChristie

6h

If you want to help, sign up to volunteer, call 1-800-JERSEY-7 #Sandy

Expand



# DH

# Network

Digital Humanitarian Network



[www.DigitalHumanitarians.com](http://www.DigitalHumanitarians.com)

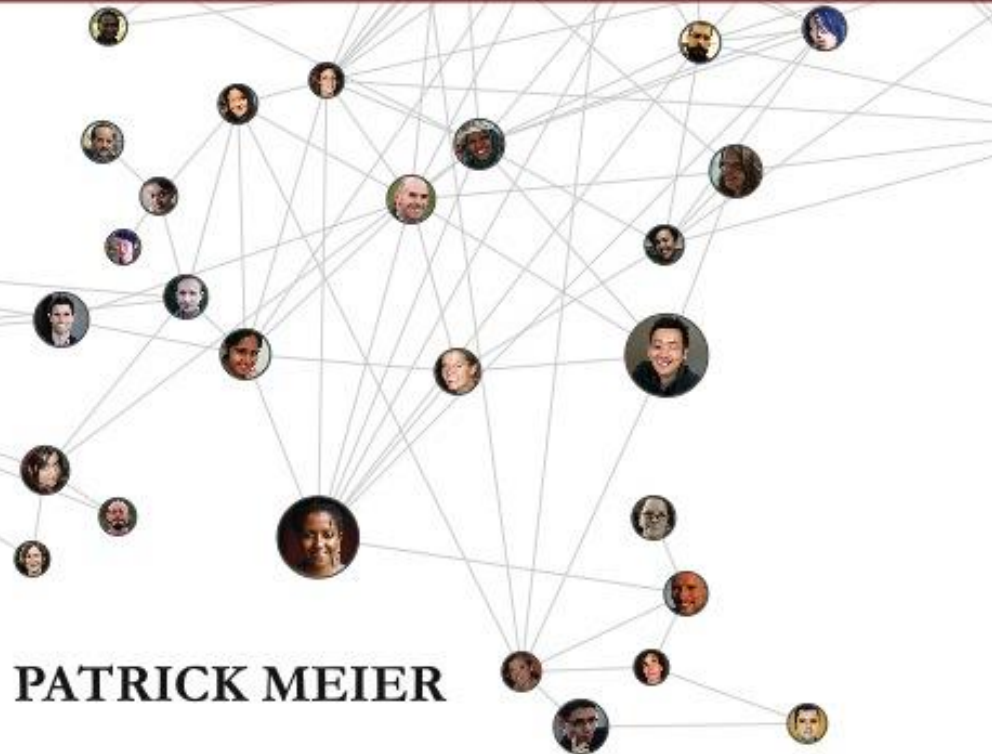
DIGITAL

# DIGITAL HUMANITARIANS

How BIG DATA changes the face of humanitarian response

HUMANITARIANS

PATRICK MEIER



[iRevolution.net/Book](http://iRevolution.net/Book)



# VERIFICATION HANDBOOK



A DEFINITIVE GUIDE TO  
VERIFYING DIGITAL CONTENT  
FOR EMERGENCY COVERAGE.

EDITED BY CRAIG SILVERMAN  
EDITOR OF REGRET THE ERROR, THE POYNTER INSTITUTE

# A definitive guide to verifying digital content for emergency coverage

Authored by leading journalists from the BBC, Storyful, ABC, Digital First Media and other verification experts, the Verification Handbook is a groundbreaking new resource for journalists and aid providers. It provides the tools, techniques and step-by-step guidelines for how to deal with user-generated content (UGC) during emergencies.

[Read the book](#)

[Buy the book](#)

Or directly download the [PDF](#), [ePub](#) or [Kindle](#) version.

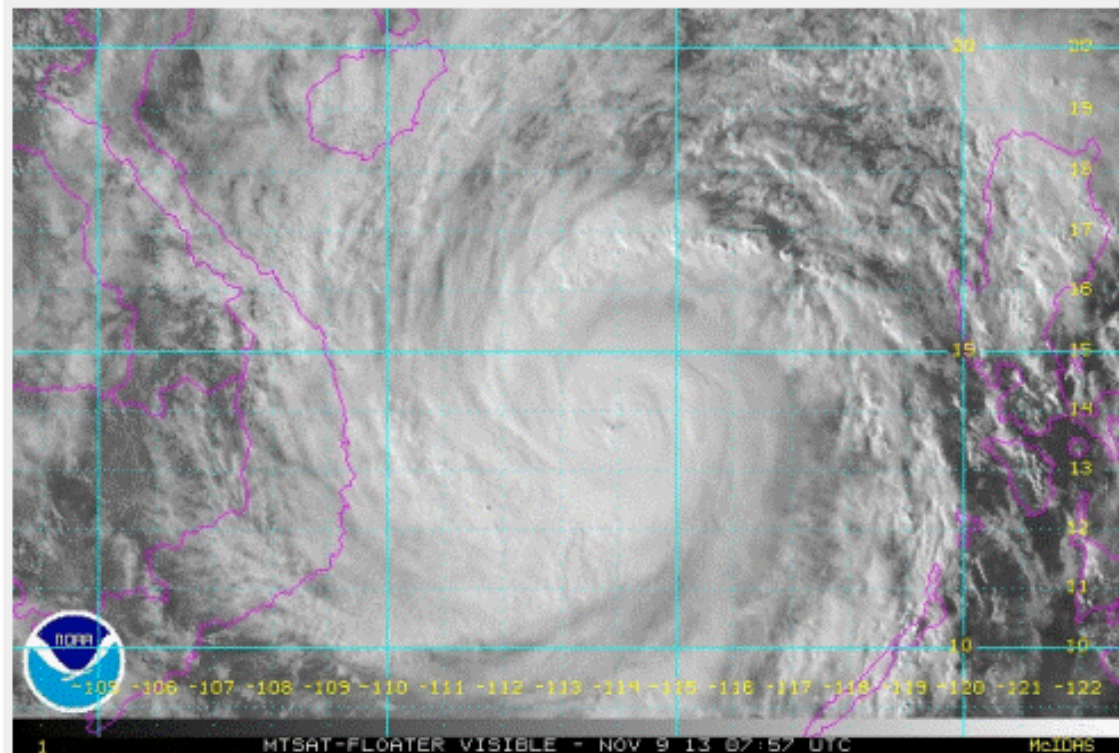
Available in [Portuguese](#) ([PDF](#), [ePub](#) or [Kindle](#))

Available in [Arabic](#) (العربية)!

Now also available in [Spanish](#)! ([PDF](#), [ePub](#) or [Kindle](#))

## PHILIPPINES: UN asks Digital Humanitarian Network to search social media after super typhoon hits

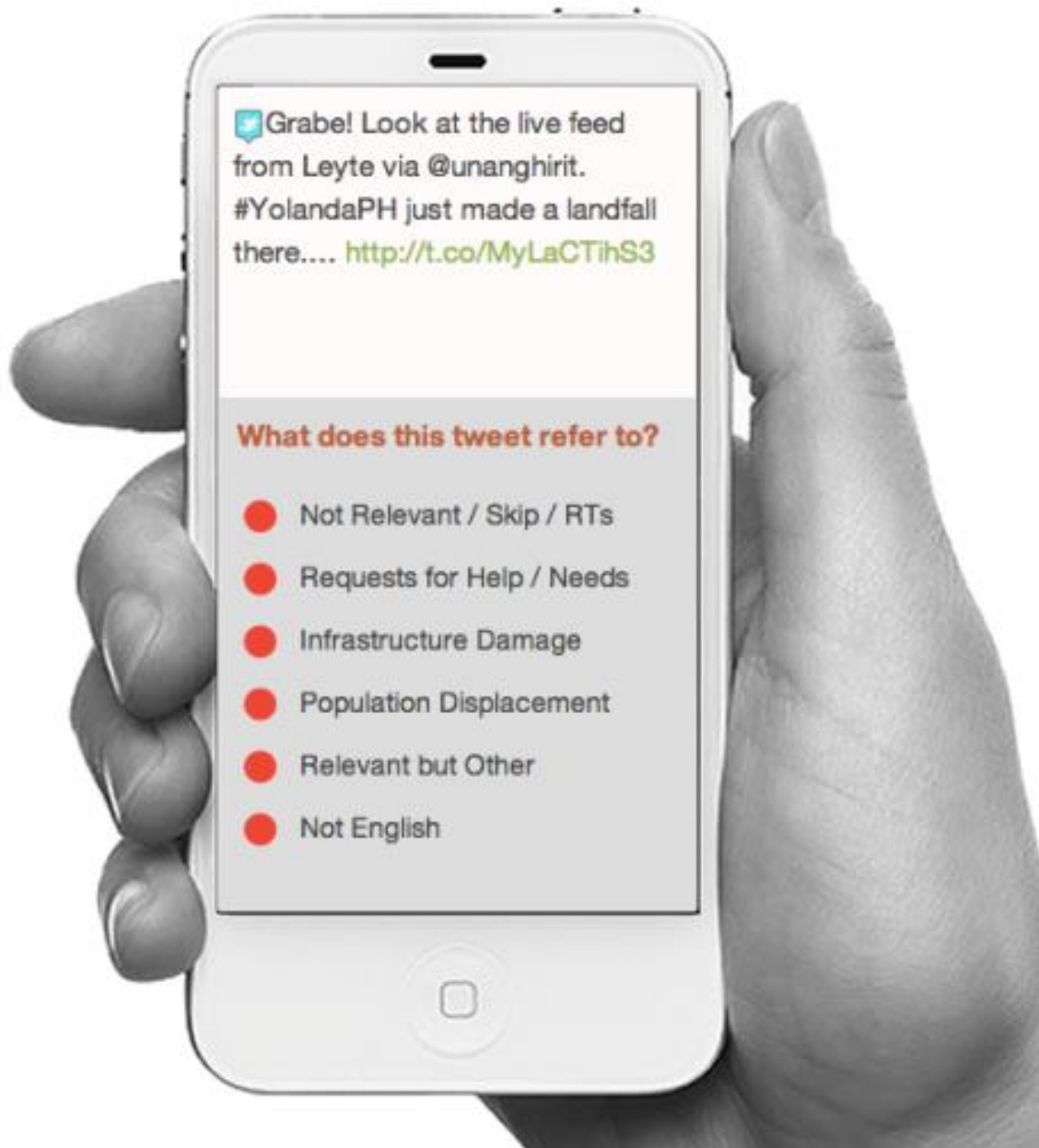
WNN Breaking



Super Typhoon Haiyan has been categorized as one of the largest and strongest storms ever to hit land as the storm sustained winds estimated at 195 mph. Image: NOAA

**(WNN/UN) Manila, PHILIPPINES, SOUTH-EASTERN ASIA: The United Nations and its humanitarian partners are supporting the Philippine Government to assess damage caused by Typhoon Haiyan (known locally as Yolanda).** The super typhoon made landfall on the eastern coast of the Philippines at 4.30 a.m. local time (8 November) as it made its way across the country.





Grabe! Look at the live feed from Leyte via @unanghirit. #YolandaPH just made a landfall there.... <http://t.co/MyLaCTihS3>

**What does this tweet refer to?**

- Not Relevant / Skip / RTs
- Requests for Help / Needs
- Infrastructure Damage
- Population Displacement
- Relevant but Other
- Not English

# UAVIATORS

HUMANITARIAN UAV NETWORK





# Aerial Clicker




We need food help us ...



# Aerial Clicker



 DRAW

 EDIT

 SAVE

 DELETE





Building up fixed-wing systems with Philippine university UAV program team





Preparing to collect overhead imagery for their damaged school N.Cebu with Consumer-level, non-threatening, expendable quadrotor UAV





**STOP EBOLA !!!**  
**MAINTAIN PERSONAL HYGIENE**

**STOP EBOLA !!!**  
**MINTAIN PERSONAL HYGIENE**





# KNOW THE FACTS!

## PREVENT YOURSELF FROM EBOLA VIRUS

IT QUICKLY KILLS

# ALWAYS WASH YOUR HANDS

### Symptoms

- Fever
- Intense Weakness
- Muscle pain
- Headache
- Sore throat
- Vomiting
- Diarrhea
- Rash
- Impaired Kidney & liver function

### Preventions

- Avoid physical contact with Ebola patients
- Wash your hands regularly
- Cook all animal food by-products thoroughly
- Avoid contact with fruit bats, Monkeys & other primates
- Handle animals with gloves & protective clothing



B30

Read SMS  
of Ebola in Lofa.  
Ebola comes  
with high fever,  
stomach pain,  
Opti... Reply Back



# Ebola: Can big data analytics help contain its spread?

By Matthew Wall

Business reporter, BBC News

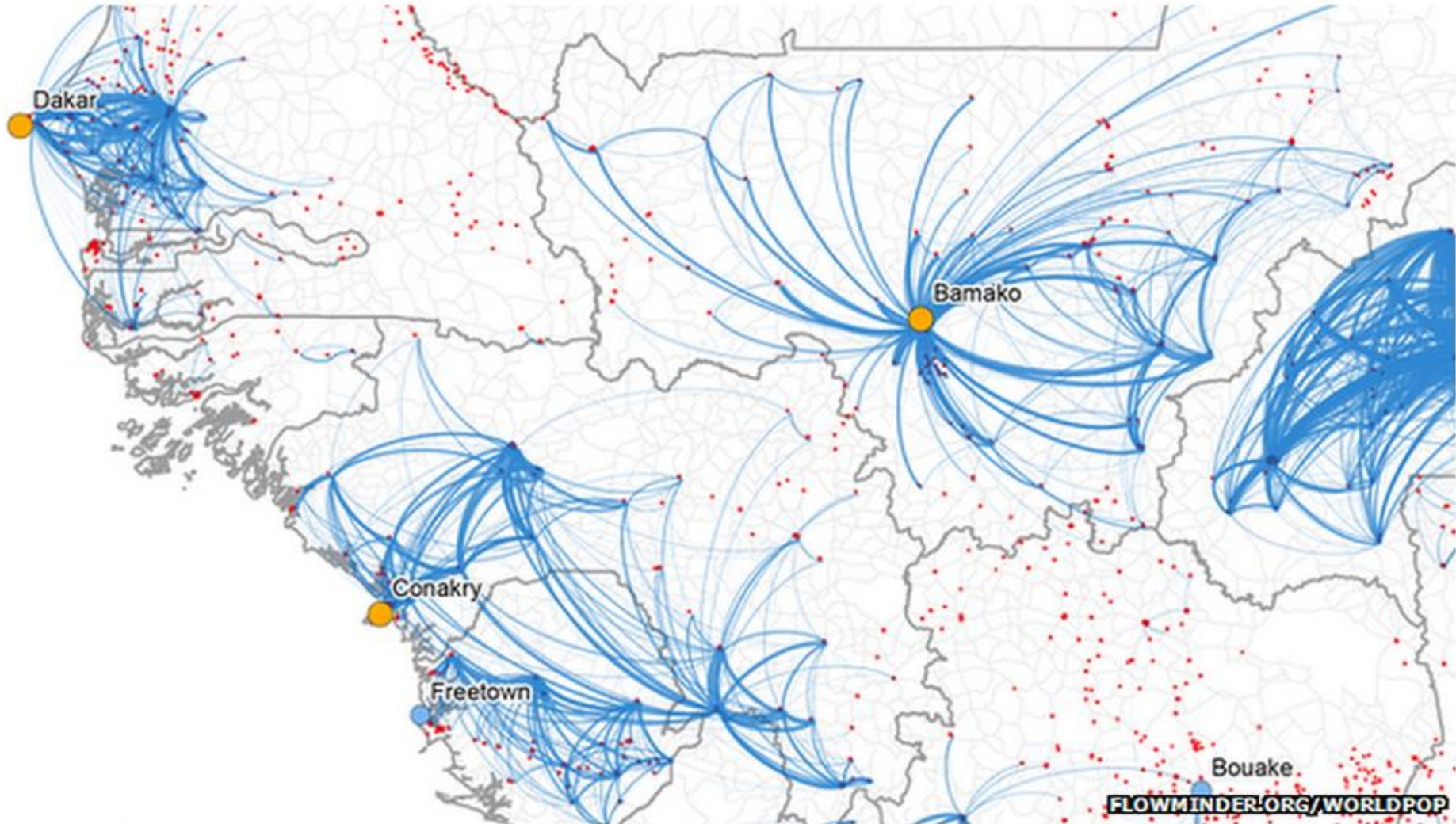


GETTY IMAGES

Educating the public about how the virus is spread is a key challenge for health professionals

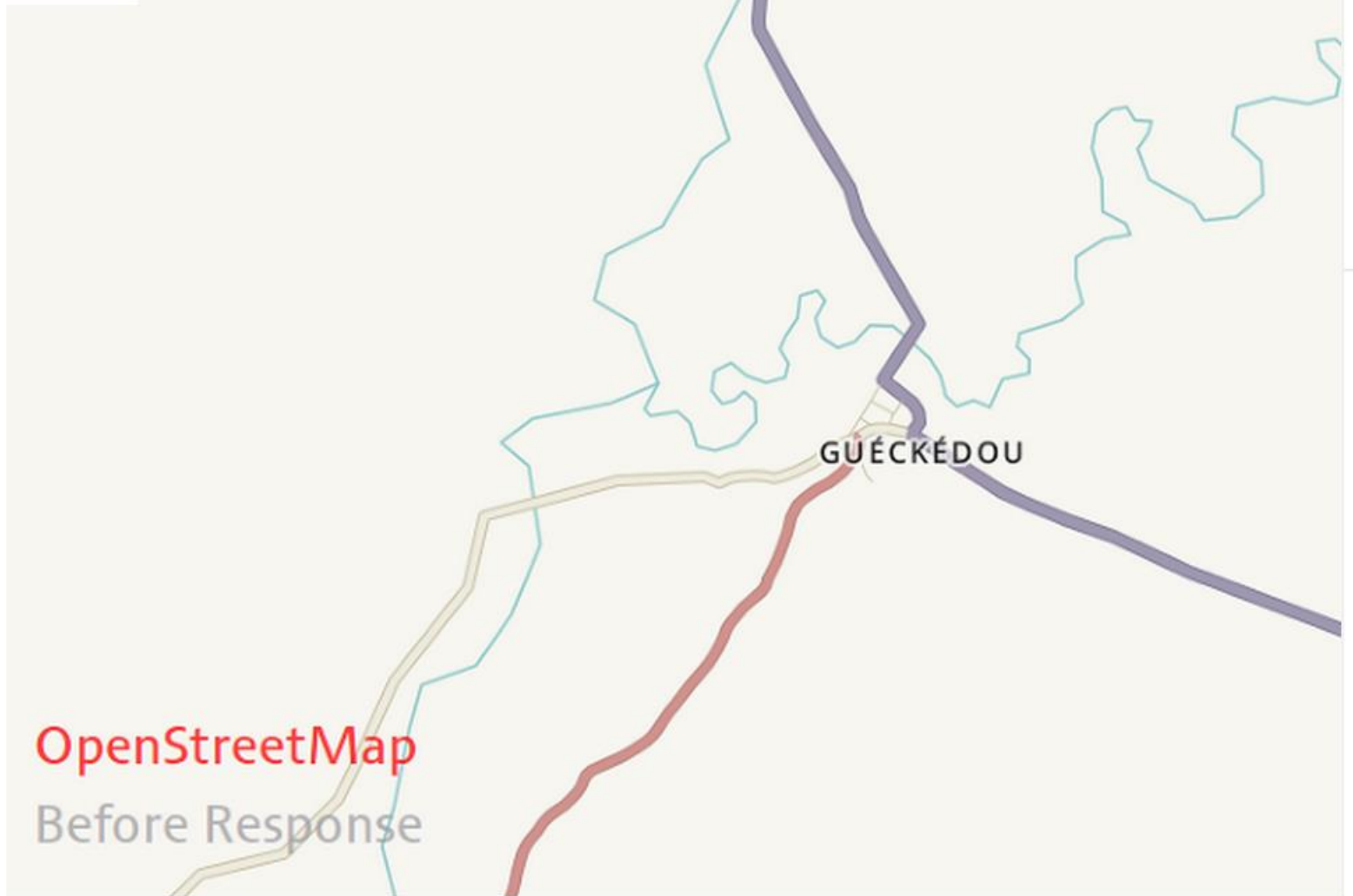


This is why the US Centers for Disease Control and Prevention (CDC) is also collecting mobile phone mast activity data from mobile operators and mapping where calls to helplines are mostly coming from.



Mobile phone data from West Africa is being used to map population movements and predict how the Ebola virus might spread

Gueckedou, Guinea as seen in OpenStreetMap before the current effort.

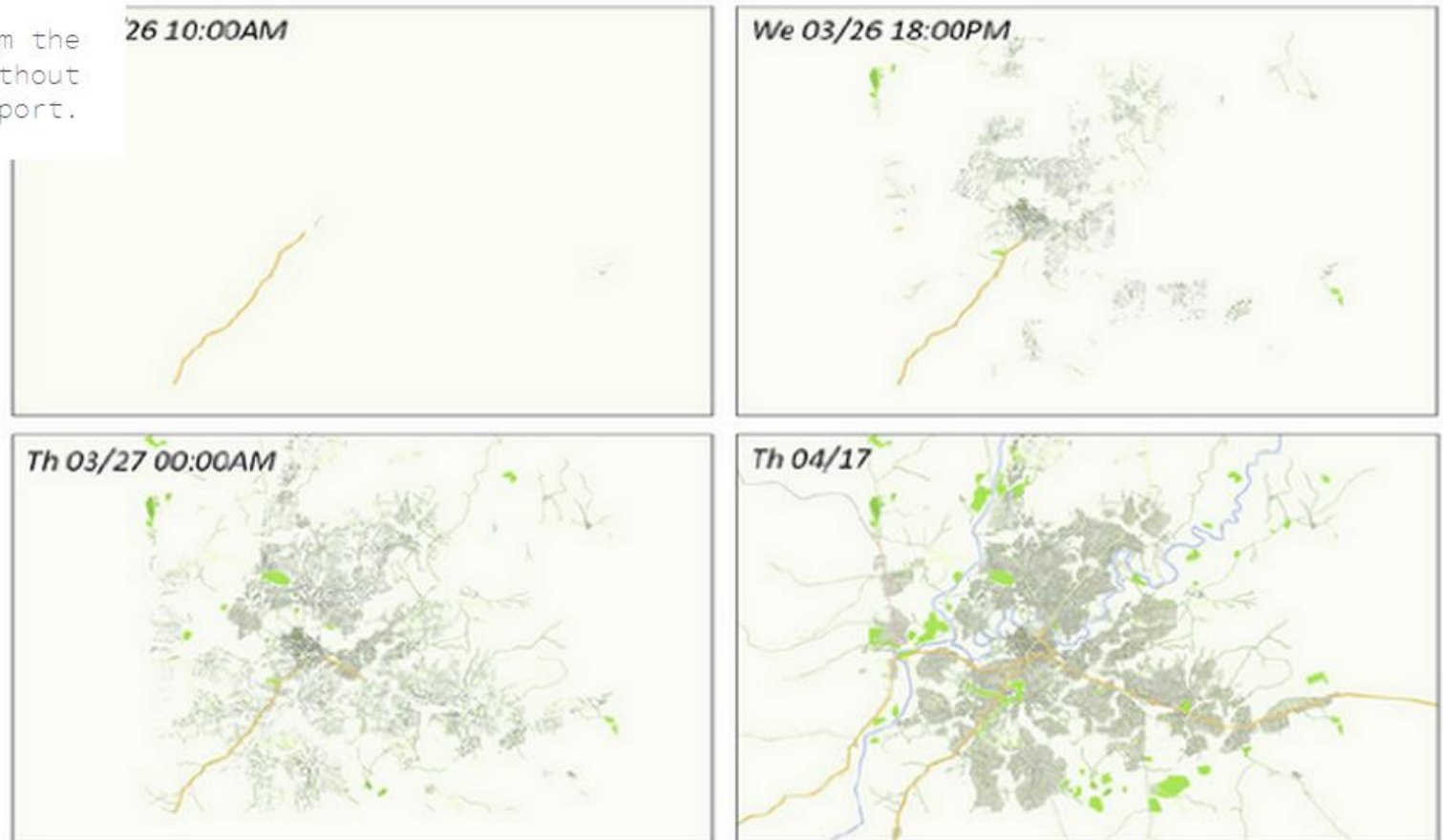


The detailed mapping of areas impacted by Ebola are thanks to the efforts of Humanitarian OpenStreetMap Team, which traces its roots to the Haitian earthquake in 2010.



According to an internal Doctors Without Borders , HOT mapped the three priority cities (Guéckédou, Macenta, and Kissidougou) in less than three days. "Within five days, 244 volunteers had mapped more than 90,000 buildings," according to the report.

An excerpt from the Doctors Without Borders report.



**Table 2: Initial mapping of three cities as completed by the OSM volunteers within three days. Volunteers continued to work on maps of the region even after that period (see image bottom right).**

"If we get a high-priority request we can map that area pretty quickly and thoroughly—often in under 24 hours," says Buck.







# SCIENTIFIC AMERICAN™



Winner of the 2011  
National Magazine Award  
for General Excellence

*Search ScientificAmerican.com*



News & Features ▾

Blogs ▾

Multimedia ▾

Education ▾

Citizen Science

Topics ▾

Home » News »

News | Health

Tweet

0

Like

## "Google Flu Trends" Found to Be Nearly on Par with CDC Surveillance Data

Searching for flu symptoms online is a reasonable proxy for actually having them

By [Katie Moisse](#) | May 17, 2010 | 8

[Google.org home](#)

Dengue Trends

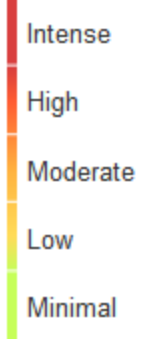
Home

Select country/region

[How does this work?](#)

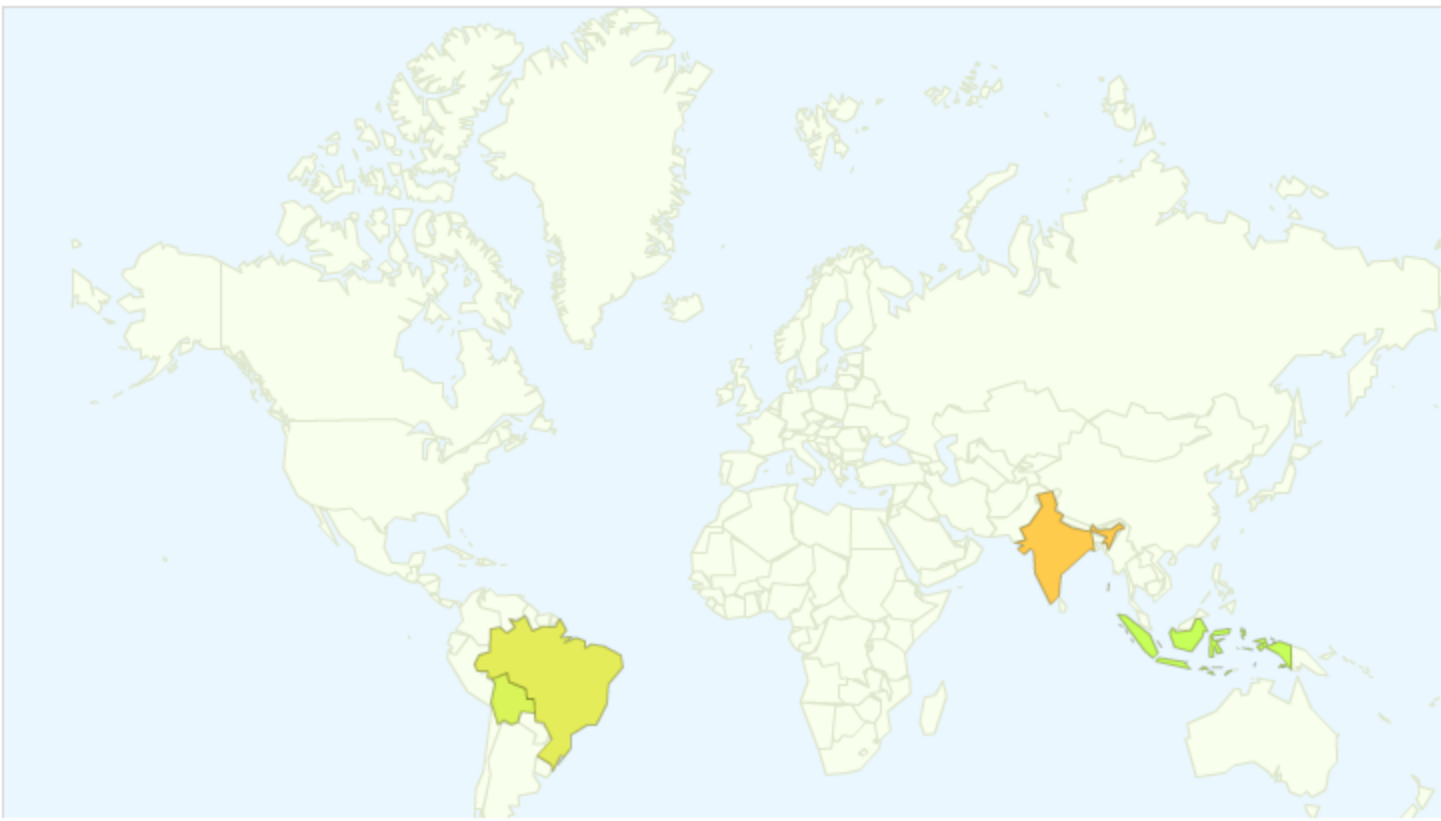
[FAQ](#)

Dengue activity



## Dengue trends around the world

We've found that certain search terms are good indicators of dengue activity. Google Dengue Trends uses aggregated Google search data to estimate dengue activity. [Learn more >](#)





Historical activity

See data for:

## Brazil Dengue Activity

Dengue activity

● Google Dengue Trends estimate ● Brazil data



Brazil: Dengue data provided publicly by the [Ministry of Health](#).



Global



Local



News

[About](#)

[Projects](#)

[Mobile](#)

[Donate](#)

[Feedback](#)

Search



[Advanced Search](#)



Outbreak Missing? Add it

Preview V5

[Quick Views](#)

**Activity Index**



Country level  
Province or local level

[Alerts from past week](#)

[Avian Influenza H7N9 News](#)



the past 1 week ▾



## Outbreaks Near Me <sup>i</sup>



### 23 Gastrointestinal Alerts

Diarrhea (1), Waterborne Illness (9), Listeriosis (4), Gastroenteritis (2), Salmonella (5), Foodborne Illness (2)



### 17 Vectorborne Alerts

West Nile Virus (12), Lyme Disease (4), Eastern Equine Encephalitis (1)



### 7 Other Alerts

Pests (7)

Search Health 3,000+ Topics

Go

Inside Health

[Research](#) | [Fitness & Nutriti](#)

TD Waterhouse

We're here 24/7.

The #1 award-winning online brokerage in Canada.

## Social Media Join Toolkit for Hunters of Disease

By BRONWYN GARRITY

Published: June 13, 2011

On a chilly February night in Los Angeles, attendees at the [DomainFest Global Conference](#) crushed together in a tent at the Playboy Mansion for cocktails and dancing. Two days later, Nico Zeifang, a 28-year-old Internet entrepreneur from Germany, woke up with chest pains, chills and a soaring [fever](#). Four colleagues shared his symptoms, Mr. Zeifang soon learned.



RECOMMEND



TWITTER



LINKEDIN

SIGN IN TO  
E-MAIL

PRINT



## Food-poisoning tweets get city follow-up

Health authorities seek out sickened Chicagoans, ask them to report restaurants

August 13, 2013 | By Monica Eng, Chicago Tribune reporter



Recommend

1



Tweet

0



Share

70



+1

34

When Juan Anguiano fired off a tweet about a bout of food poisoning in April, he thought he might hear back from sympathetic friends or pick up a new follower.

"I wasn't expecting the city of Chicago to tweet me and ask me to file a report," said Anguiano, an editor for Univision.

# Clorox Gets Viral With Flu-Tracking Campaign

by Karl Greenberg, October 28, 2015, 3:00 PM

 Comment

 Rec

With the power of Clorox,<sup>®</sup>  
**the flu's days are numbered.**  
Help fight the Cold & Flu virus with these Clorox<sup>®</sup> products. 



Use as directed

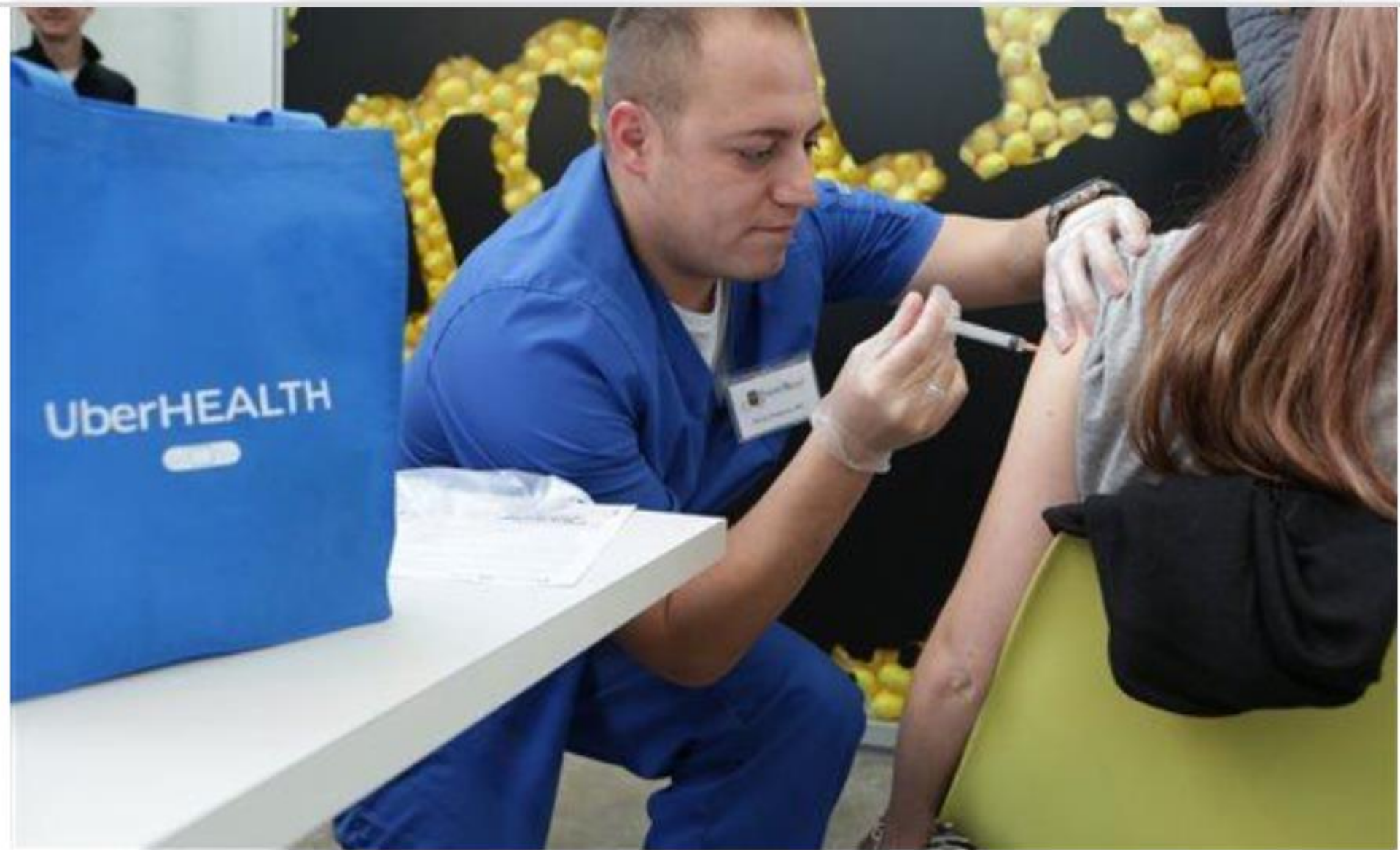
This is one of those times you will probably want to get a needle in the arm. It's flu season. If you get inoculated you are doing yourself and everyone else a favor. No, it doesn't turn you into an alien, doesn't contain thought-

control nano-robots, and won't make you autistic.



# Uber delivers flu shots in 36 cities, in one-day experiment





***A woman gets a flu vaccination shot from a nurse at her workplace in Chicago last year. (Image via Jean-Marc Giboux/AP)***





PAST

PRESENT

FUTURE





Environment Canada

www.ec.gc.ca

me

Contact Us

Help

Search

### In Focus

1

2

3

4

5

6

7

Play



© John Reaume

Track the status of birds identified as conservation priorities in Canada.

# Foldit

## 57,000 Citizen Scientists

▼ Dr. David Baker



Several **sheets** are lining up in this protein, but one is out of place. Pull the misaligned **sheet** back in to form **hydrogen bonds**! Don't forget you can control-click to lock, and use Shake and Wiggle.

Repeat Introduction

Clear Labels

Progress: 8899 of 10000

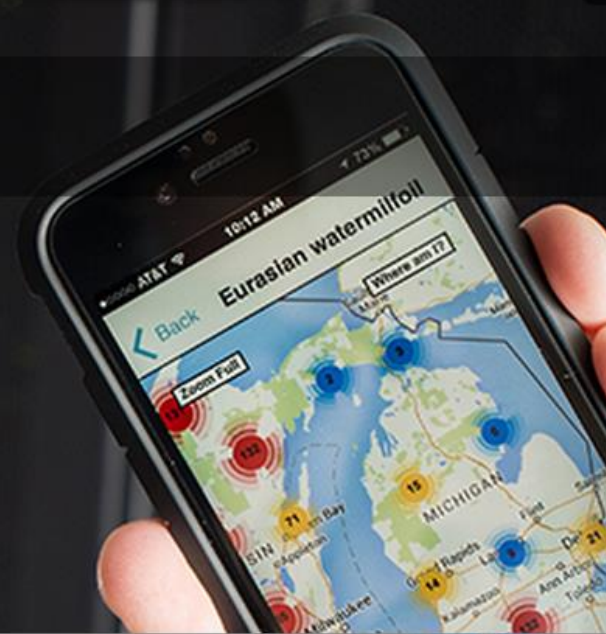
Level 4-2: A Sheet Out of Place

► Chat





ENVIRONMENT + SCIENCE & TECHNOLOGY



Published: Feb. 20, 2015

# TRACKING INVASIVES? THERE'S AN APP FOR THAT

Contact(s): [Layne Cameron](#), [Amos Ziegler](#)

Like 13
 Tweet 151
 Share 6

Invasive species will have a tougher time sneaking around undetected,



Version 2.1



## My Search Criteria

Kingdom [Animalia](#) ✕

-- Common Name --

or

-- Scientific Name --

or

-- Family Name --

Records 7 to 12 of 12

[First](#) | [Previous](#) | [Next](#) | [Last](#)

[Animals](#) ( [Birds](#) | [Crustaceans](#) | [Fish](#) | [Insects](#) | [Mammals](#) | [Mollusks](#) ) | [Pathogen](#) | [Plants](#) ( [Algae](#) | [Aquatics](#) | [Diatom](#) | [Grasses](#) | [Herbs](#) | [Shrubs](#) | [Trees](#) | [Vines](#) )

### Beech scale

Family: [Eriococcidae](#) (Felt scale family)

Scientific Name: *Cryptococcus fagisuga*

USDA Symbol:

Duration:

Habit: [Insects](#)



### Bighead carp

Family: [Cyprinidae](#) (Minnow family)

Scientific Name: *Hypophthalmichthys nobilis*

USDA Symbol:

Duration:

Habit: [Fish](#)



### Bloody red shrimp

Family: [Mysidae](#) (Opossum shrimp family)

Scientific Name: *Hemimysis anomala*

USDA Symbol:

Duration:

Habit: [Crustaceans](#)



### Brown marmorated stink bug

Family: [Pentatomidae](#) (Stinkbug family)

Scientific Name: *Halyomorpha halys*

USDA Symbol:

Duration:

Habit: [Insects](#)



## Report Sightings

---



Report invasive species in your area. Your sightings are an important part of any successful control effort.

## MISIN Alerts

---



Create custom email alerts for new observations in your area of interest.

## Species Training Modules

---

## News Channel

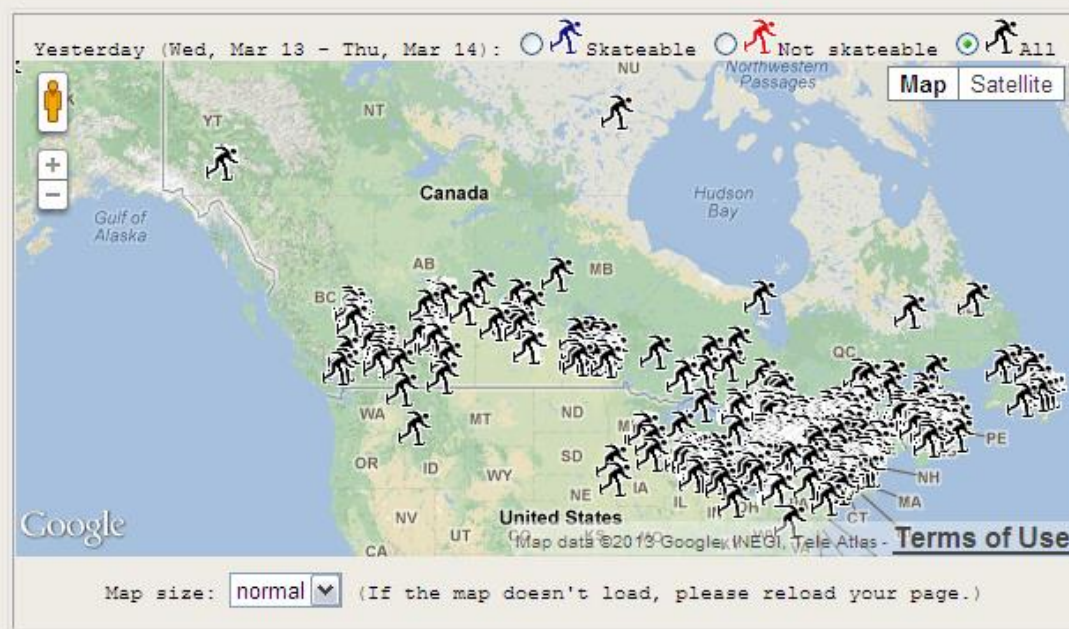
---

# Rinkwatch

[Home/Map](#) [Log In](#) [New RinkWatcher](#) [Fun Stuff](#) [Forum](#)

The RinkWatch Team

Welcome to RinkWatch, where backyard skating meets environmental science



[Existing RinkWatchers](#)

[Become a RinkWatcher](#)

[What is RinkWatch?](#)





# ZOONIVERSE

REAL SCIENCE ONLINE



## Hear Whales communicate

You can help marine researchers understand what whales are saying

WHALES



## Help explore the ocean floor

The HabCam team and the Woods Hole Oceanographic Institution need your help!

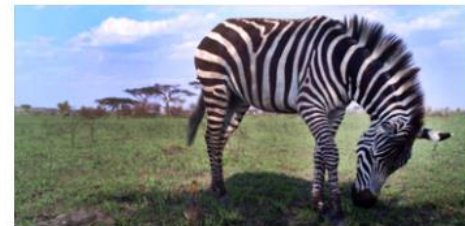
SEAFLOOR EXPLORER



## You're hot on the trail of bats!

Help scientists characterise bat calls recorded by citizen scientists.

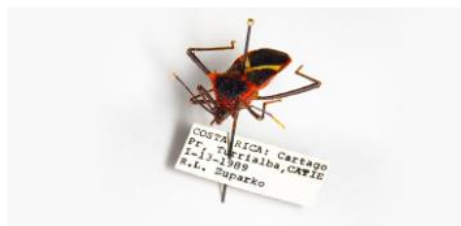
BAT DETECTIVE



## Go wild in the Serengeti!

We need your help to classify all the different animals caught in millions of camera trap images.

SNAPSHOT SERENGETI



## Take Notes from Nature

Transcribe museum records to take notes from nature, contribute to science.

Notes from Nature



## Dive into the planktonic world

No plankton means no life in the ocean. Help measure and identify different species of plankton to assess t...

PLANKTON PORTAL



## California condors need your help

By tracking their location and social behavior, you can help this critically endangered species.

CONDOR WATCH



## Discover Floating Forests

We are trying to understand how forests of kelp grow and change over time. We need your help to find these ...

FLOATING FORESTS

# You're hot on the trail of bats! Get searching.

## Learn the facts

Did you know that one in every five mammals is a bat? How about that bats are found all over the world, including in your local park? Who knew that bats use sounds you can't hear to socialise, hunt for food, and to find their way around? Check out the case files to learn more about bats!

[Learn about bats](#)

## Start your search

Jump right in and begin classifying calls. Take your ears on a drive through our database - and tell us what you see and hear. Listen out for bats, insects and other sounds.

[Begin searching](#)

## Discuss the findings

Have you found a particularly interesting bat call? Having trouble distinguishing bat calls from insect noise? Have a question about bats, or a crazy theory about how bats use sound? Head over to the Bat Detective Forum to discuss your findings with others including the Bat Detective team.

[Visit Talk](#)





**University College London (UCL)** is London's leading multidisciplinary university with over 30,000 students. UCL was founded in 1826 as a radically different university, opening up England for the first time to people of all beliefs and social backgrounds. Bat Detective is supported by the Department of **Genetics, Evolution and Environment (GEE)**, the **Centre for Mathematics, Physics and Experimental Biology (CoMPLEX)** and the **Centre for Computational Statistics and Machine Learning (CSML)**.



**The Zoological Society of London (ZSL)** was founded in 1826 by Sir Stamford Raffles and is dedicated to the worldwide conservation of animals and their habitats. Bat Detective is supported by the **Institute of Zoology (IoZ)**, the research division of ZSL specialising in the conservation, monitoring and health of bats and their habitats.



**The Bat Conservation Trust (BCT)** works to secure the future of bats in our changing world. Through its volunteers, experts and the public, BCT discover more about bats, take action to conserve them and inspire thousands of people to do their bit for bats.



BatLife Europe <http://www.batlife-europe.info> is a newly formed international NGO. It is a coalition of national bat conservation organisations that are committed to promoting the conservation of bats and their habitats throughout Europe.



The University of Auckland is New Zealand's largest and most highly ranked university. Since 1962, when the old, disused courthouse and jail, the University now stretches across 5 campuses, hosting more than 20,000 undergraduate and postgraduate students across eight faculties. The main University of Auckland building is in the heart of the City of Auckland, which in 2011 was ranked as having the third highest quality of life in the world.



HOME NEWS OPINIONS FEATURES REGULARS JOBS PODCASTS WEBINARS

RESEARCH BUSINESS NEWS AND ANALYSIS

*The Journal of Chemical Physics did.*

AIP | The Journal of  
Chemical Physics



## Crowdsourcing compounds to tackle antibiotic resistance

18 June 2015

[Emma Stoye](#)



7



89



3



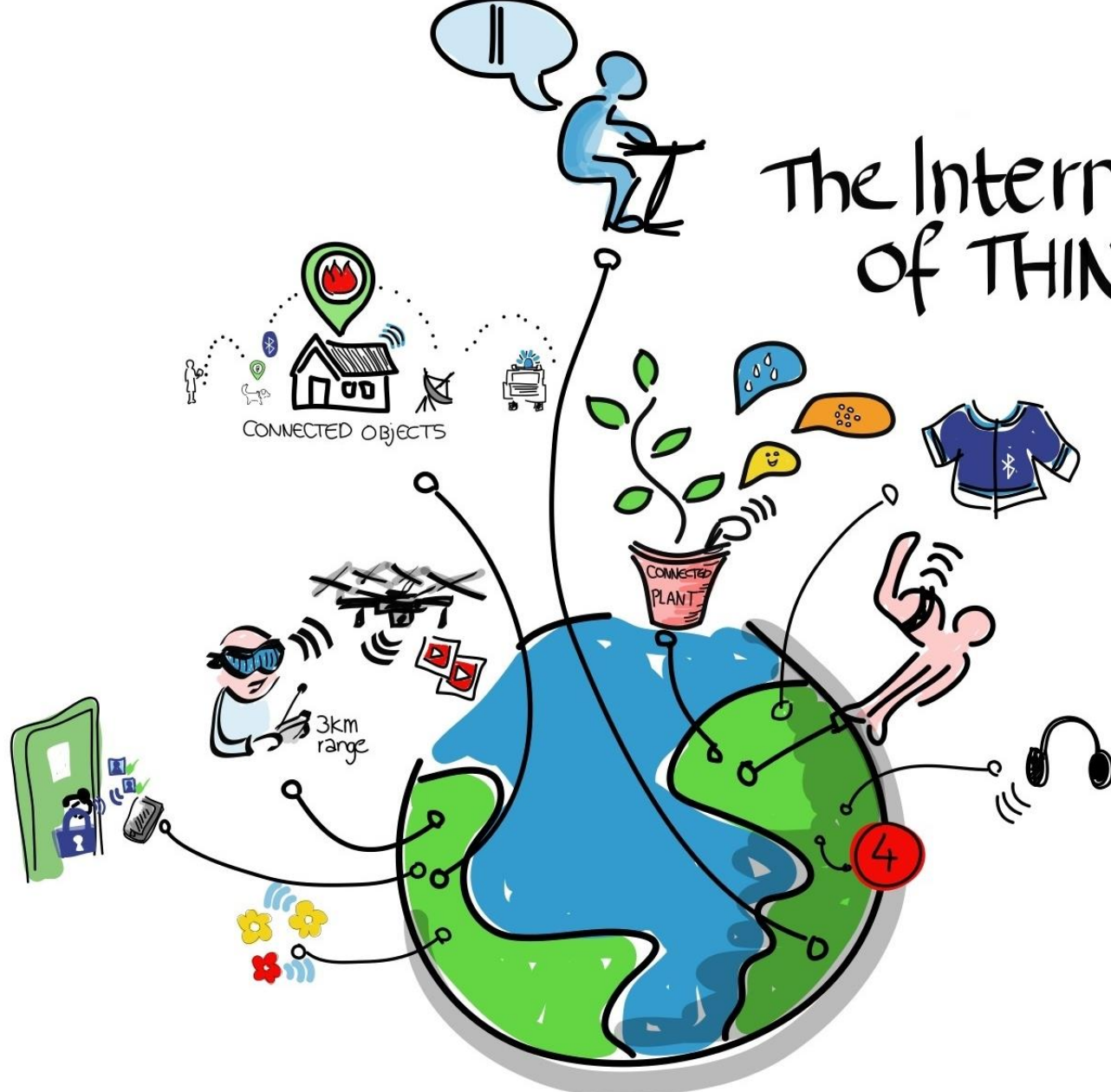
14

Chemists around the world are being called on to donate samples of novel compounds they have synthesised to a crowdsourcing project that aims to find new antibiotics.

The [Community for Open Antimicrobial Drug Discovery](#) (CO-ADD) was set up by scientists at the University of Queensland in Brisbane, Australia, in response to the growing problem of antimicrobial resistance.

'Pharmaceutical companies are finding it harder and harder to find new drugs,' says CO-ADD director [Matt Cooper](#), 'partly because everyone's screening the same type of compounds. We've got to start to think of more creative approaches.'

# The Internet of THINGS



CONNECT  
THE WORLD


INTRODUCING

# Fitbit Force™

Push your fitness further with stats **right on your wrist.**

BUY NOW \$129.95

FREE SHIPPING

LEARN MORE 





# UNDERSTAND YOUR DOG LIKE NEVER BEFORE™

Introducing breakthrough wearable technology that bridges the communication gap between dogs, their owners, and the people who love them. Our three-part approach of Discover, Learn, and Share gives unprecedented insight into your dog's health and wellbeing, information and tools for you and your dog to grow together, and ways to share with your veterinarian and social networks.



EXPLORE 









**PREGNANCY  
RATES**

**UP**

**CALVING  
INTERVALS**

**DOWN**



**CONCEPTION  
RATES**

**UP**

**DAIRY COW DATA. VALIDATED.**

**WELCOME TO ICEROBOTICS**

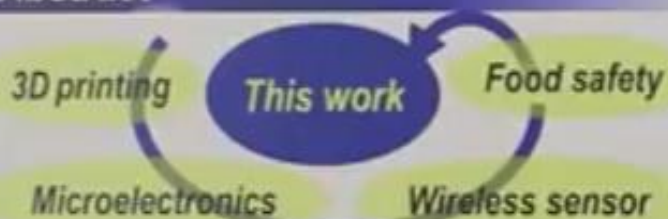


# 3D-PRINTED MICROELECTRONICS FOR INTEGRATED CIRCUITRY AND PASSIVE WIRELESS SENSORS

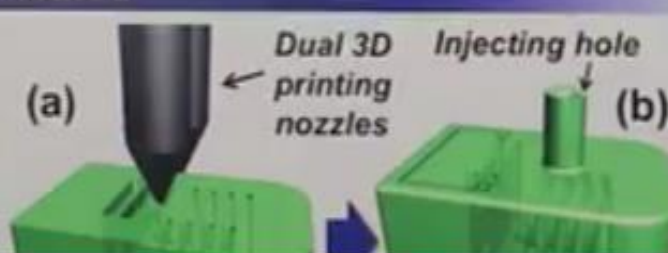
Sung-Yueh Wu<sup>1,2</sup>, Chen Yang<sup>1</sup>, Wensyang Hsu<sup>2</sup>, and Liwei Lin<sup>1</sup>

<sup>1</sup> University of California, Berkeley, USA <sup>2</sup> National Chiao Tung University, Hsinchu, Taiwan

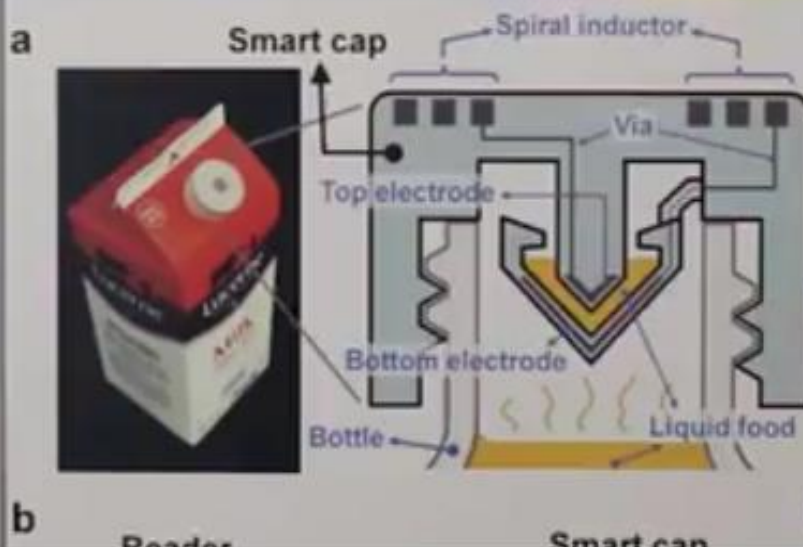
## Abstract



## Method



## LC Sensor



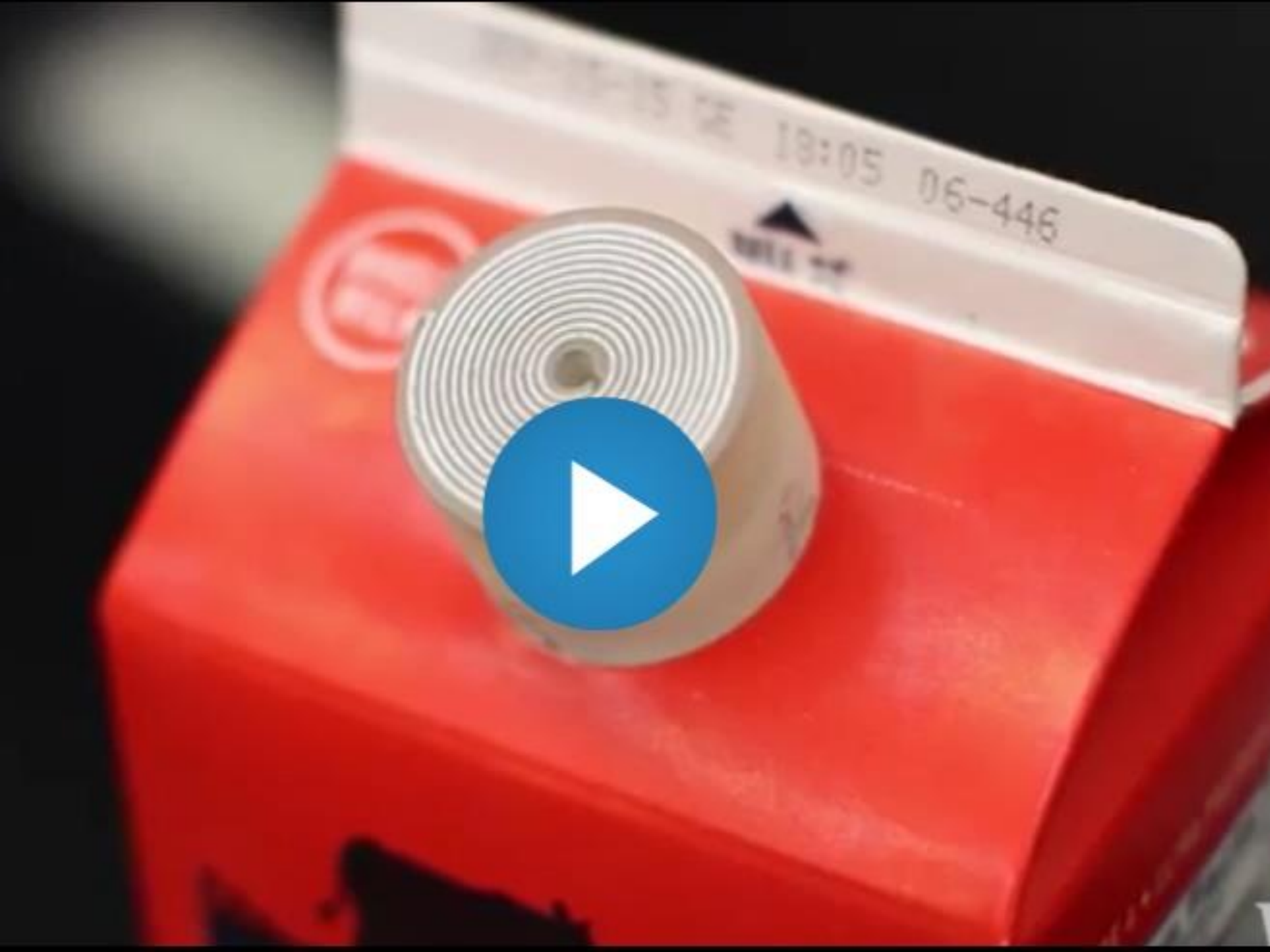
❖ A "smart cap" for rapid, wireless detection of liquid food quality.

(a) Cross-section showing spiral inductor (L) & capacitor (C) for LC sensor.

(b) Sensing principle:

# 3-D Printed Milk Cap Can Tell When Milk Has Spoiled







# Zurich Buses Outfitted with Air Quality Sensors for Mobile Monitoring



Jaymi Heimbuch  
Technology / Clean Technology  
June 27, 2011

## RELATED



WIMOTO WIRELESS SENSOR SYSTEM NOW OFFERS MOTION DETECTION AND WATER SENSING



THIS NEW APP TURNS IPHONES INTO A HANDHELD BIOSENSOR EQUIVALENT TO \$50,000 LAB UNIT








Photo by [EURIST e.V.](#) via Flickr CC



Laboratories at the École Polytechnique Fédérale de Lausanne (EPFL) in Switzerland and one at ETH Zurich are working on a better way to collect data about cities' air quality. Researchers have started OpenSense, a project that will test out if using the existing infrastructures of public transportation and mobile phone networks could be a smart solution for monitoring pollution.



## Zurich Air Quality Details

Last Update: 11/11/2013 17:00 UTC

Legend :

Pollution	Index Value
Very Low	 0 / 25
Low	 25 / 50
Medium	 50 / 75
High	 75 / 100
Very High	 > 100

Pollutants	 CURRENT ROADSIDE	 YESTERDAY ROADSIDE
NO2	31	7
PM10	15	5
PM2.5	-	-
CO	0	0

Pollutants	 CURRENT BACKGROUND	 YESTERDAY BACKGROUND
NO2	32	9
O3	4	27
PM10	10	11
PM2.5	-	-
SO2	1	1
CO	0	0

The Initiative



The Grand Challenges



Grand Challenges Explorations




Grant Opportunities



## FEATURED STORY

### Grand Challenges Explorations Accepting Applications

Proposals will be accepted until May 6, 2014 for projects focusing on five global health and development topics. 

1 2 3 ||

## Grand Challenges – Fostering innovation in global health research

The Grand Challenges in Global Health initiative fosters scientific and technological innovation to solve key health problems in the developing world. The initiative includes the Grand Challenges in Global Health grant program and the newer Grand Challenges Explorations grant program.



Competition Details

Teams

Media

Blog

About



## An Historic Gathering

All five Star Trek TV captains discuss the show's impact on technology

DSTL. TM & © 2012 CBS. ARR.



## Introducing the Qualcomm Tricorder XPRIZE.

A \$10 million competition to bring healthcare to the palm of your hand.

Introducing Scanadu Scout™

# Finally, you can know yourself best.



Check your health as easily as your email.



TEMPERATURE



HEART RATE



OXIMETRY

# A partnership between the public and the government to solve important challenges.



Advanced search

**SORT BY:**

Most recent



## Climate Change In Focus

**FEATURED** *Posted by EPA*

An exciting challenge that offers middle school students a chance to create an awesome original video about climate change. [Show more](#)



NON-MONETARY PRIZES



OPEN UNTIL  
**MAR 10, 2014**



## Apps for Energy

**FEATURED** *Posted by DOE*

\$100,000 in prizes for the best web and mobile applications that use a featured Department of Energy API, tool or idea to solve an energy-related challenge  
[Show more](#)

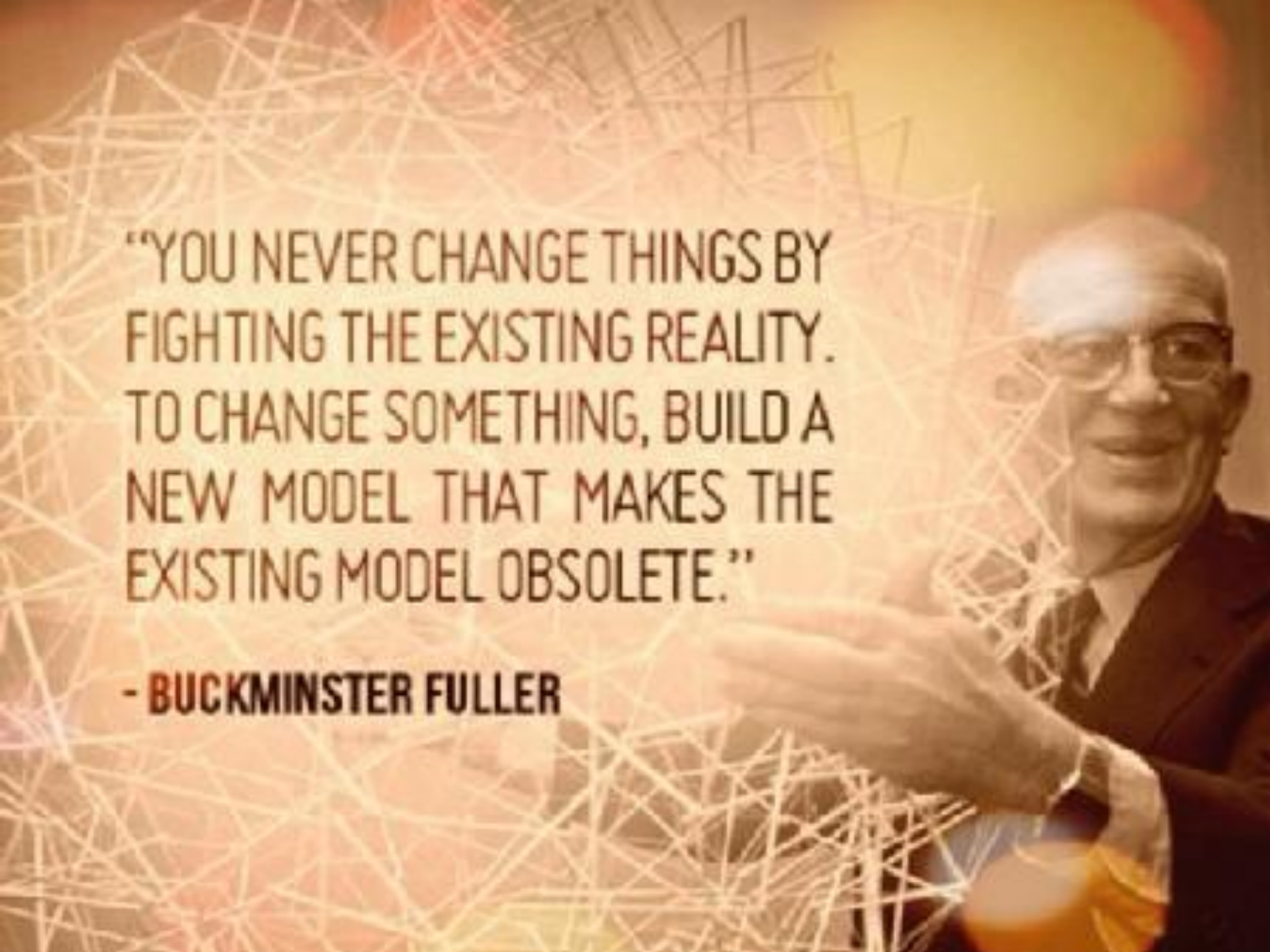


**\$100,000**  
IN PRIZES



OPEN UNTIL  
**MAR 09, 2014**

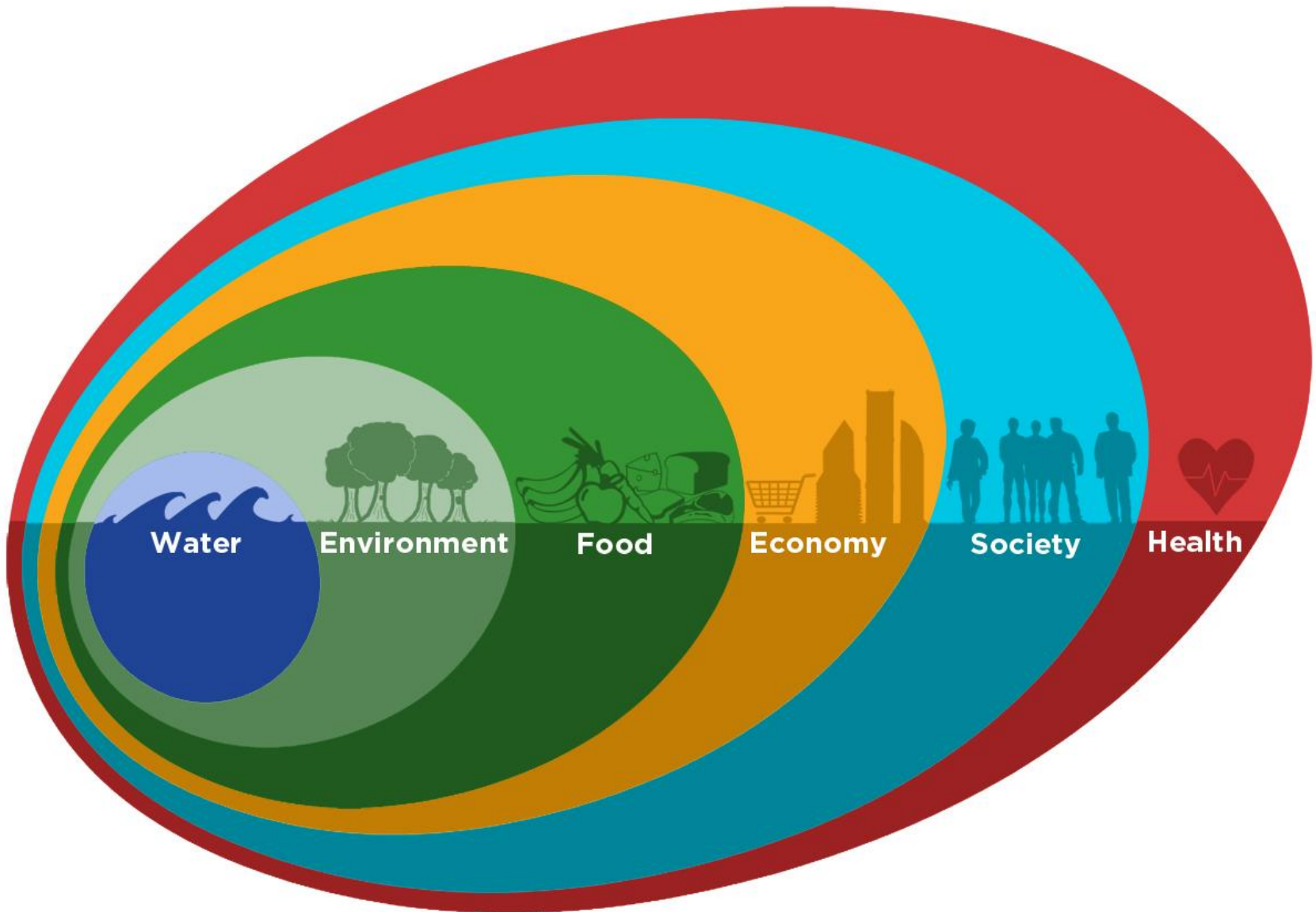




“YOU NEVER CHANGE THINGS BY  
FIGHTING THE EXISTING REALITY.  
TO CHANGE SOMETHING, BUILD A  
NEW MODEL THAT MAKES THE  
EXISTING MODEL OBSOLETE.”

- **BUCKMINSTER FULLER**

# Resilience







[@theresabernardo](#)

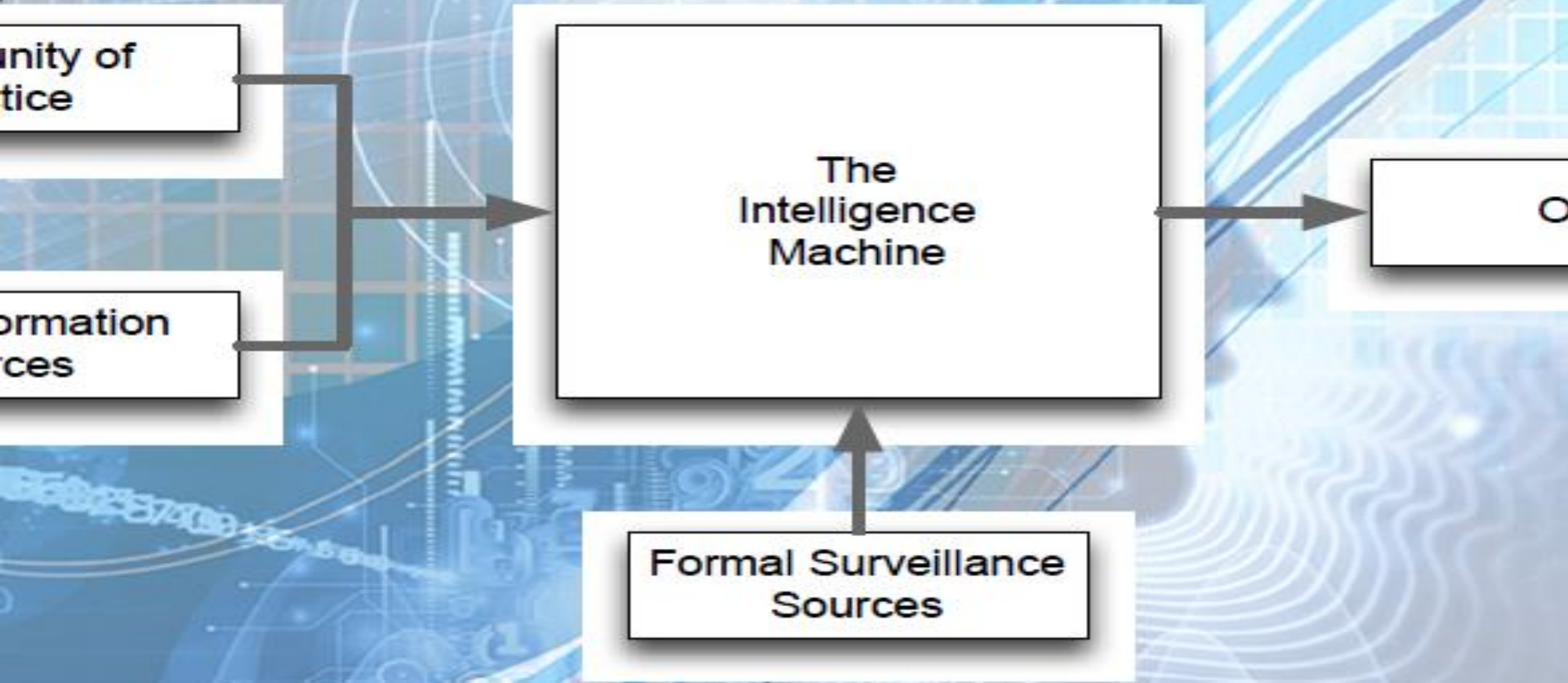




# Strategic Outcomes

1. Safe animal food products are accessible to Canadians.
2. Canada protects the health of farmed animals, people and the ecosystem (One Health).
3. The Canadian farmed animal industry is profitable and sustainable.
4. Canada protects the welfare of farmed animals.
5. The Canadian farmed animal health and welfare system is trusted world wide.
6. The Canadian farmed animal health and welfare system is coordinated and constantly improved.

*The original strategic outcomes were refined in 2014 (shortened from eight to six)*



Identification of early warning signals from the collation (and community supplied) information sources by relevant



# STAKEHOLDER & PARTNER SURVEY RESULTS

ated that their on produces on

ated that their on produces e

amples of the intelligence source from her than

they would borating collection, ibution of

e information such as expectations distribution details, quality assurance.

**Internal Sources of Information and Intelligence**

**External Sources of Information and Intelligence**

**Collaboration with CEZD-IIR**

**The Need for Emerging and Zoonotic Disease Information and Intelligence**

**Open Sharing or Restricted Access**

**Pushed or Pulled**

**Stakeholders support the CEZD-IIR project and would welcome additional information and details**

- 90% of respondents support better intelligence in their work
- 85% of respondents support their organization's production of intelligence
- 39% support "open sharing" or "open access to data"
- 34% support "restricted access" or "pushed" information
- 24% support "restricted access" or "pulled" information
- 63% support "pushed" or "pulled" information





**Internal Sources  
of Information  
and Intelligence**

**The Need for  
Emerging and  
Zoonotic Disease  
Information and  
Intelligence**

**External Sources  
of Information  
and Intelligence**

**Open Sharing or  
Restricted Access**



**@theresabernardo** 116



[Table of Contents](#) > [Module 14](#) > [Hot Topic: Social Media](#) > [Social Media Q&A - 8pt](#)

## Social Media Q&A - 8pt ▾



[Back to Topic](#)



### **Mystery shoppers of Sudan**

*Created by Hisham Hassan on Nov 25, 2014 9:29 PM* ☆ [Subscribe](#)

Last summer , I created a face book page called "Sudanese mystery shoppers " . Sudan is a one of the largest countries in Africa ( it used to be the largest country in Africa and the middle east before it separated into Sudan and South Sudan) . As a third world country , Sudan lacks strict food safety measures as well as food safety awareness. My f.b group is the first entity in Sudan that promotes the mystery shopping culture and utilize it's marketing and consumer awareness tools . The idea is simple, we focus on restaurants as a first stage .With help of some friends , I created a mystery shopping form . members of the group choose a restaurant , we assign a member or members to conduct a thorough evaluation of the restaurant based on location ,the quality of service , the quality of food , food safety issues,personal hygiene of employees,cleanness of the premises,and price . We encourage members to take pictures and post them along with their evaluation on our f.b page . members also are encouraged to post alerts about food poisoning incidents .Some restaurants welcomed us . I had the privilege to provide some consultation services to several restaurants in Khartoum,Sudan about food safety and personal hygiene simply because they felt that more consumers are aware of their rights and became more picky about where to eat ; so; in order to be more competitive , they have to provide customers with "safer" food .I'm hoping to attract more members and have business owners attention as well as consumers interest .

# Uber Will Bring You a Kitten. Right Now

Go to Grid

IT COSTS \$30 FOR A 15-MINUTE CUDDLE SESSION WITH PROCEEDS GOING TO SHELTERS



By [Arden Dier](#), Newser Staff

Posted Oct 29, 2015 10:36 AM CDT

STORY

COMMENTS (23)

FACEBOOK

TWITTER

EMAIL



[View larger images >>](#)

Who can resist? (AP Photo/Vadim Ghirda)

(NEWSER) – Have 15 minutes to fill and \$30 to spare? Get on Uber. From 11am to 3pm Thursday, Uber will deliver kittens to the place of your choosing in 50 cities across the US and Canada just so you can get in a 15-minute cuddle session on National Cat Day, reports [Tech Times](#). What happens if you fall in love with an adorable furball?

You're in luck, because each kitten will come from a shelter or rescue and is in need of a good home. Still, every visit will help as the proceeds will go toward participating shelters, [Uber](#) says. Just open up the Uber app and click the "kittens" option to get in on the action. Then be patient: Uber expects demand will be high.



# Uber To Deliver Adoptable Kittens On Thursday For 15 Minutes Of Snuggle Time

By [Louise Chan](#), Tech Times | October 29, 12:57 AM

Like

Follow

Share(71)

Tweet(?)

Reddit

0 Comments

SUBSCRIBE



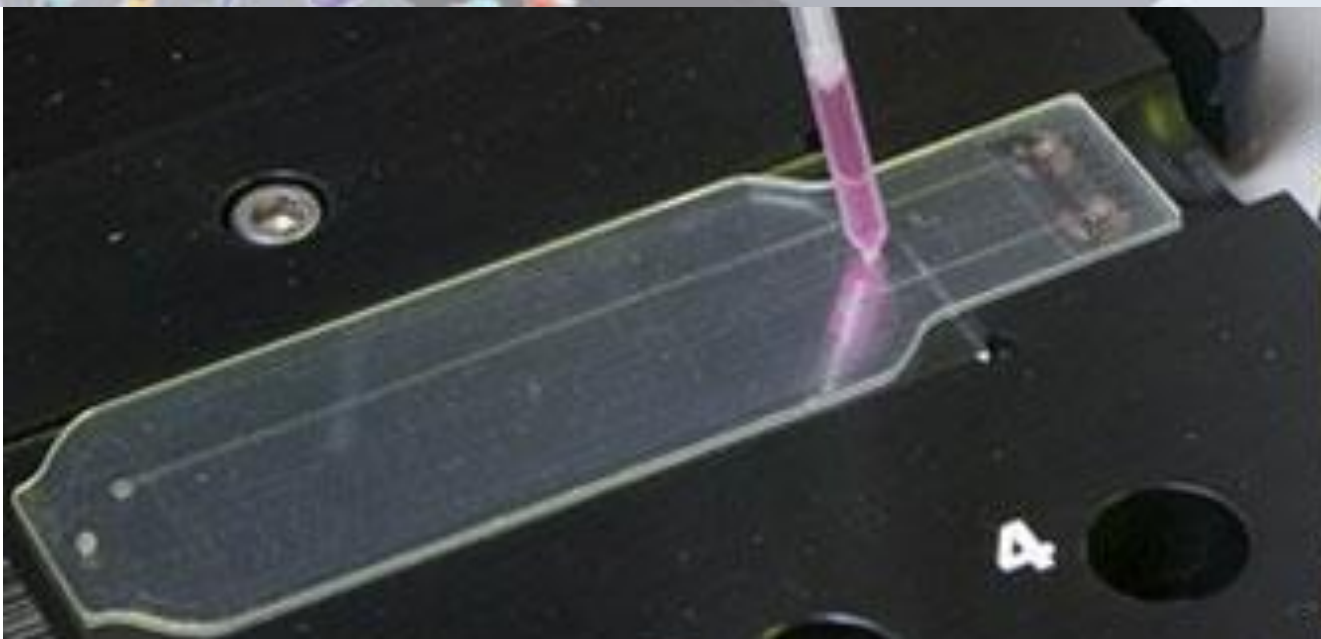
In celebration of National Cat Day, Uber is offering 15-minute kitty cuddles to its clients. The best part is that all the kittens are eligible for adoption.  
(Photo : Uber | Twitter)

What can \$30 do for you on a stressful or boring Thursday late morning to mid-afternoon without needing to move around so much? Believe it or not, your \$30 can get you 15-minute snuggles with the cutest kittens you can set your sights on delivered by Uber directly to your home or workplace. It's the truth and it's happening in over 50 cities across North America!

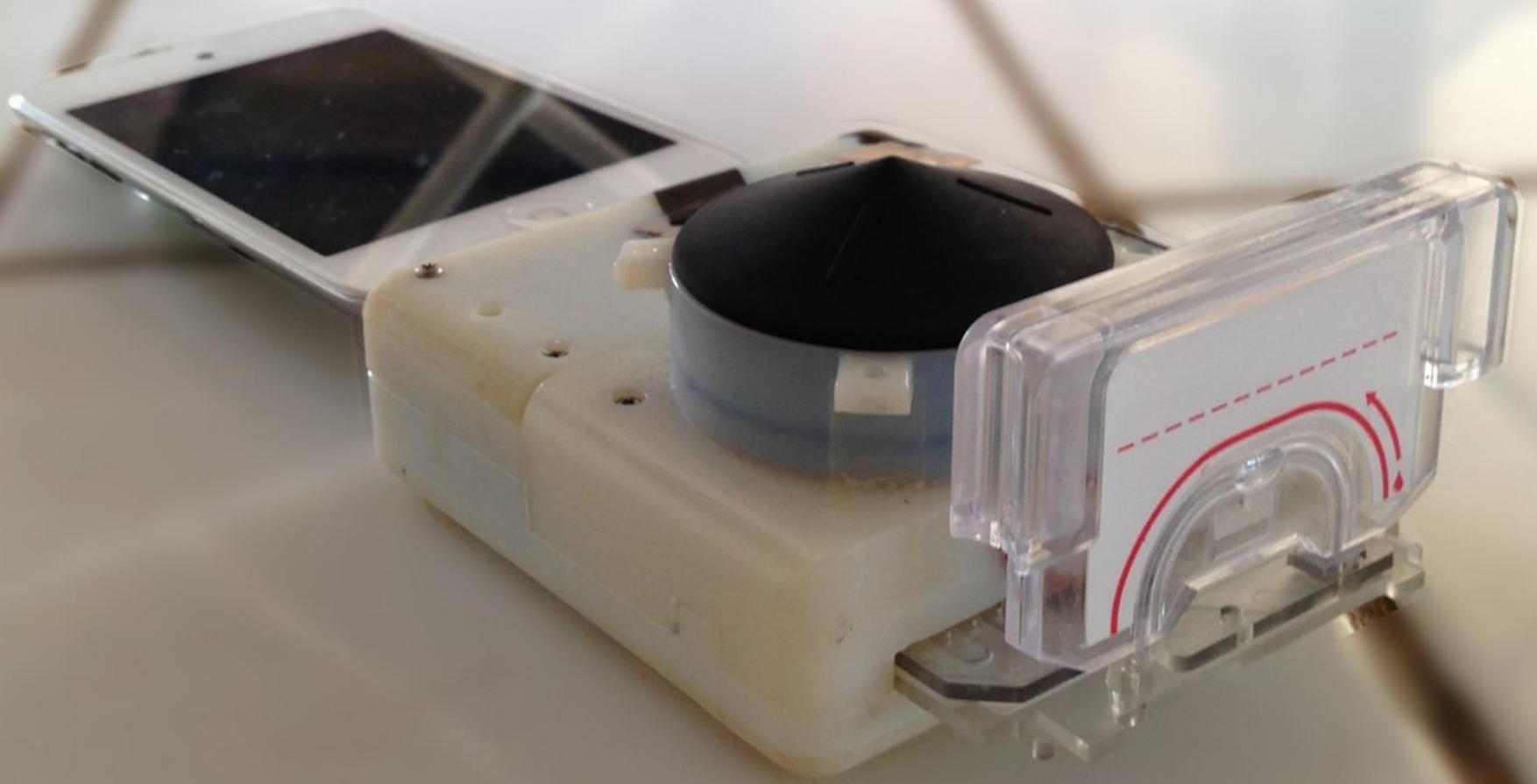


Research Highlights

# Quick Detection of Pathogens by the Thousands



# A 15-minute HIV and syphilis test – from your iPhone





## MERS is a threat. Not only for the Middle East

Manfred Green, head of the School of Public Health at the University of Haifa Israel and scientific coordinator of TELL ME project, explains why the spread of MERS-CoV hasn't been called a pandemic yet...



**Manfred Green**  
School of Public Health, Haifa University

**Primary care online course**

**New communication model**

**viewpoint >>**

### A close look at Ebola

Planning a clinical trial in order to test a possible treatment for Ebola. This is the reason that brought **Roberto Satolli** – physician and journalist, director of Zadig and member of the TELL ME project – to the small fishing town of Lakka, a few miles from Freetown, in Sierra Leone.

### TELL ME Conference

Bridging theory and practice for effective communications during infectious disease crises





# PAHO GOES VIRAL







# Cholera: a One Health challenge

Deforestation  
+  
Irrigation  
+  
Rain



Fertilizer



**Nitrogen  
runoff**



Human and  
animal waste

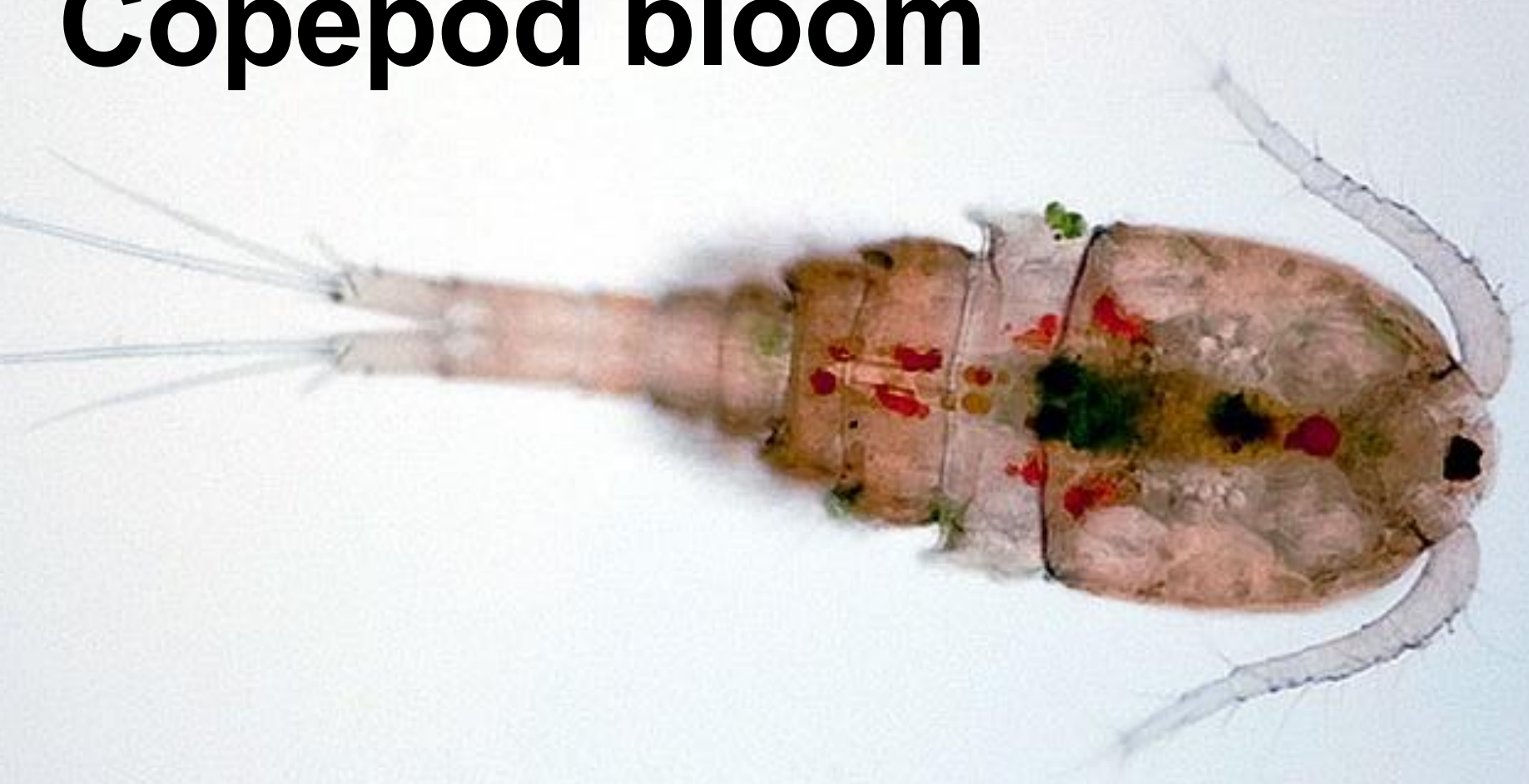




# Algal bloom



# Copepod bloom



# Cholera transmission to humans





## Global Alert and Response (GAR)

---

[GAR Home](#)

---

[Alert & Response  
Operations](#)

---

[Diseases](#)

---

[Global Outbreak Alert &  
Response Network](#)

---

[Biorisk Reduction](#)

---

### Cholera in Mexico

Disease outbreak news

19 OCTOBER 2013 - The Ministry of Health in Mexico has reported 171 confirmed cases, including one death, of infection with *Vibrio cholerae* O1 Ogawa toxigenic between 9 September to 18 October 2013.

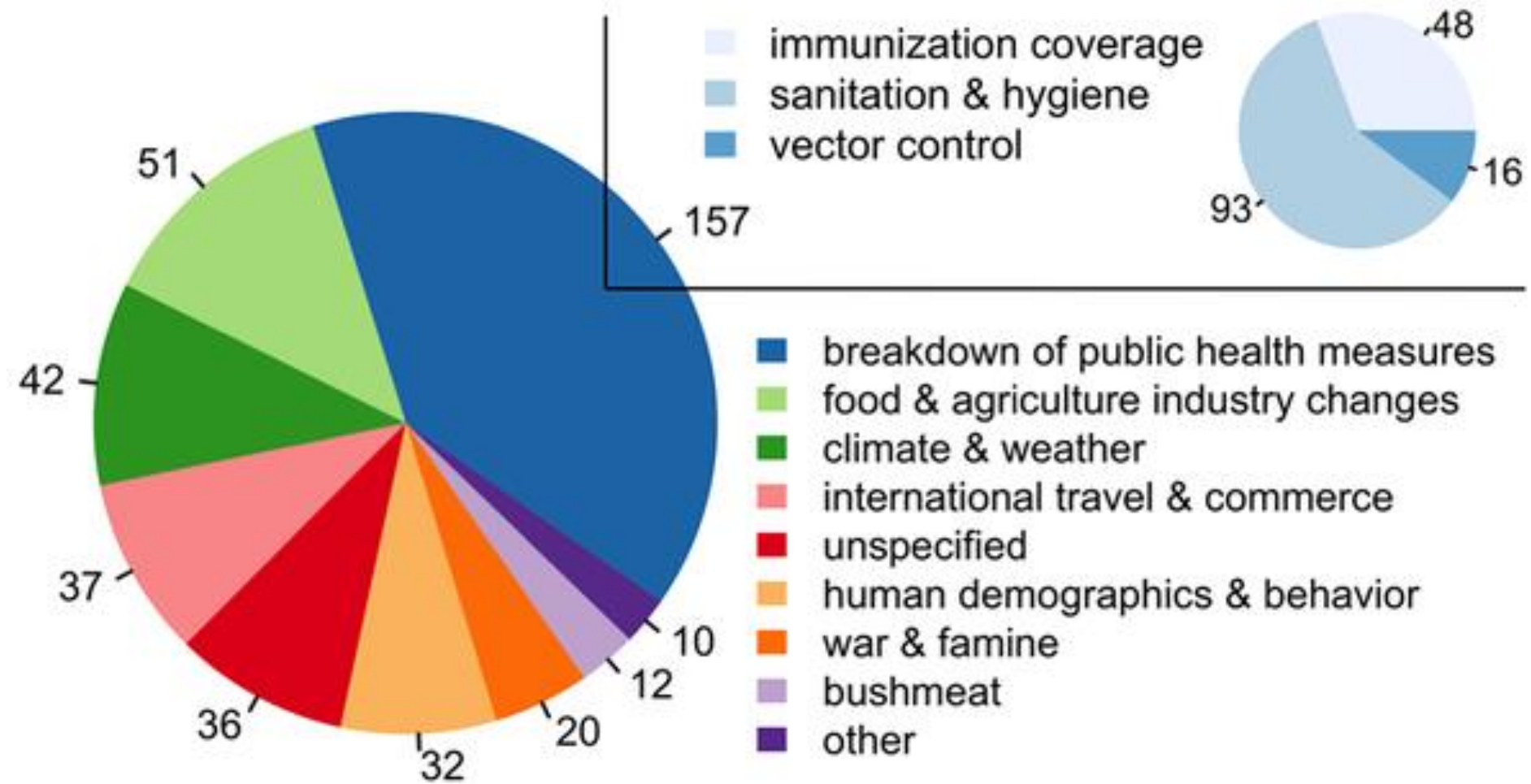
In the second week of September 2013, Mexico was affected simultaneously by a hurricane and tropical storm which caused heavy rains, floods, landslides and internal displacement of populations, thus increasing the risk of diarrhoeal diseases.



# Drivers of outbreaks

- breakdown of public health measures
- food & agriculture industry changes
- climate & weather
- international travel & commerce
- unspecified
- human demographics & behavior
- war & famine
- bushmeat
- other

# Drivers of outbreaks



Bogich et al. PLoS Medicine 2012

# Determine Your Exposure Risk

This educational tool provides a quick way to determine your Ebola exposure risk based on [CDC Epidemic Response Guidance](#)

*\*\*\*Use of this tool is not a substitute for medical advice and to be used for educational purposes only\*\*\**

**Select The Check Box If Your Answer Is Yes To Any Of The Following**

## Exposure Risk

- Have you had a percutaneous (*e.g., needle stick*) or mucous membrane exposure to blood or body fluids from an Ebola patient?
- Have you been exposed to the blood or body fluids (*including but not limited to feces, saliva, sweat, urine, vomit, and semen*) of a person with Ebola while the person was symptomatic without appropriate personal protective equipment (*PPE*)?
- Have you processed blood or body fluids of a person with Ebola while the person was symptomatic without appropriate *PPE* precautions?
- Have you had direct contact with a dead body without appropriate *PPE* in a country with widespread Ebola virus transmission?



# VALUE IS CREATED BY MAKING SENSE OF DATA

Connected devices



Data



Knowledge



Action

## Smart city



Sensors embedded in road surface



Find an empty parking spot



Park quickly without frustration

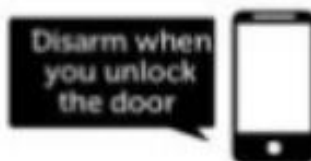
## Smart home



Connected lock



Detect when I come home



Disarm the alarm when I unlock the door

## Smart car



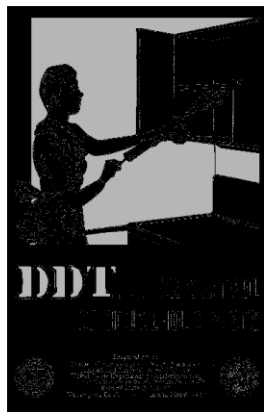
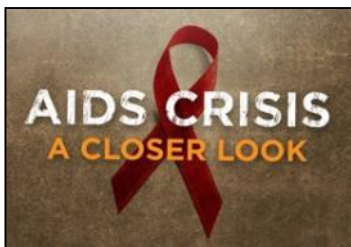
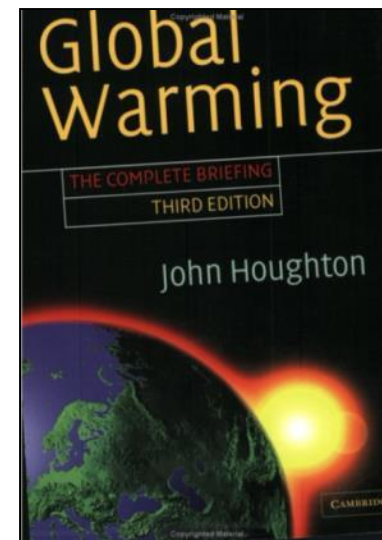
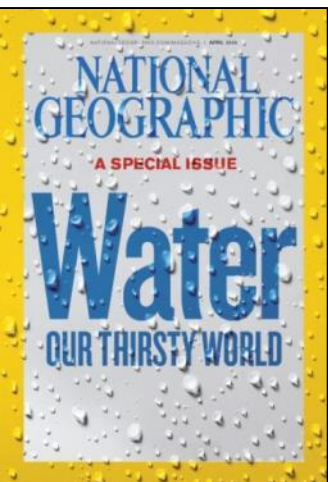
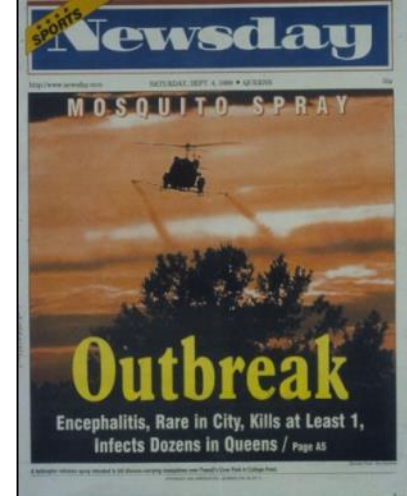
Bluetooth dongle reading vehicle data



Detect collisions



Automatically call emergency services



**Global Food Crisis**  
The new world of soaring food prices















# Nathan Eagle

## PopTech 2010



Nathan Eagle is a visiting assistant professor at MIT, a research assistant professor at Northeastern University, and an Omidyar Fellow at the Santa Fe Institute. His research involves engineering computational tools, designed to explore how the petabytes of data generated about human movements, financial transactions, and communication patterns can be used for social good.

Eagle also serves as the CEO of *txteagle*, Inc., a mobile crowdsourcing company that has recently become one of the largest employers in Kenya. He holds a bachelor's and two master's from Stanford University. His PhD from the MIT Media Laboratory on reality mining was declared one of the "10 technologies most likely to change the way we live" by the MIT Technology Review. Eagle's academic work has been featured in *Science*, *Nature*, and the *Proceedings of the National Academy of Sciences*, as well as in the mainstream press.



**iCow**

[Home](#) [Crowdmap](#) [Services](#) [Edu V](#)

## iCow Features

Prompts farmers on vital days of cows gestation period

---

Helps farmers find the nearest Vet and AI providers

---

Collects and stores farmer milk and breeding records

---

Sends farmers best dairy practices

---

The world's first mobile phone cow calendar!

---

From iCow 5024

08:25 AM

iCow update: Napier grass is best 2- 3 feet after which it loses nutritional value and stops supporting milk production. Keep it short and sweet.

Thank you for using iCow









insight

ICW

ICW

ICW

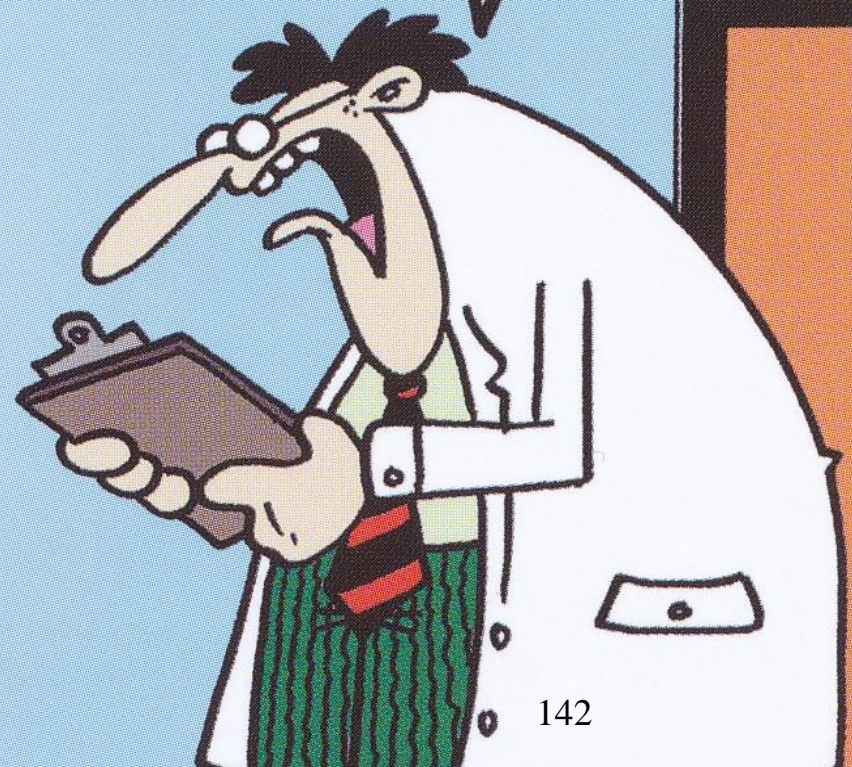
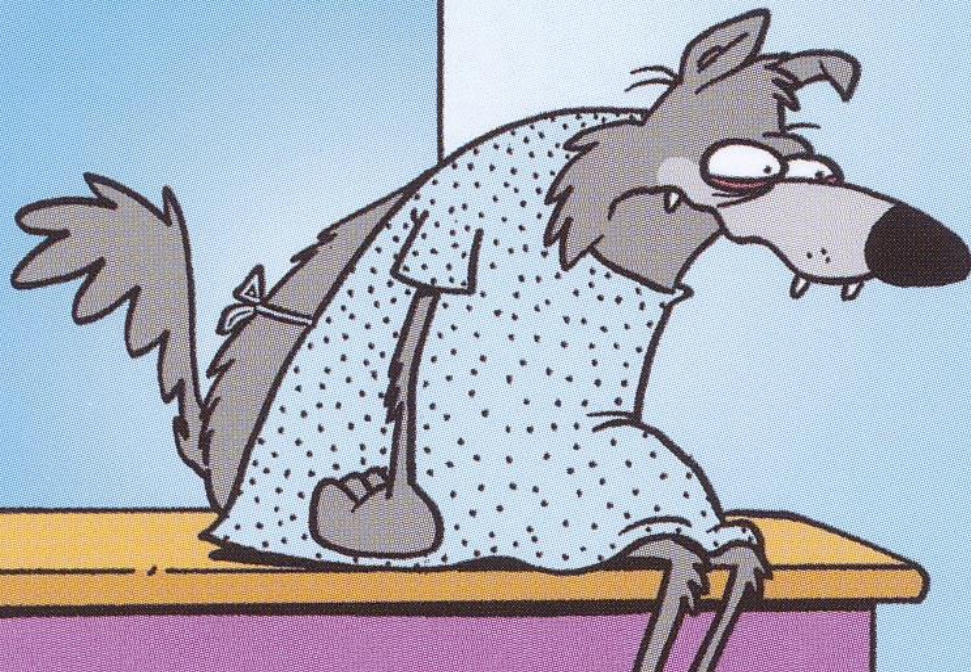
ICW

ICW



THE BIG BAD WOLF  
LEARNS THE MEANING  
OF IRONY FIRST HAND

SWINE FLU.





# Global Death Toll of Different Causes of Death – Oxfam<sup>7</sup>

This Data-Entry is here:  
[/ Data / 11 War & Peace / Terrorism](#)

Navigate this Data-Entry

- 1 Empirical View
  - 1.1 Airline Hijackings
  - 1.2 Terrorism in Specific Countries and Regions
  - 1.3 The Risk of Terrorism in a broader Perspective

2 Data Sources

Share this Data Entry



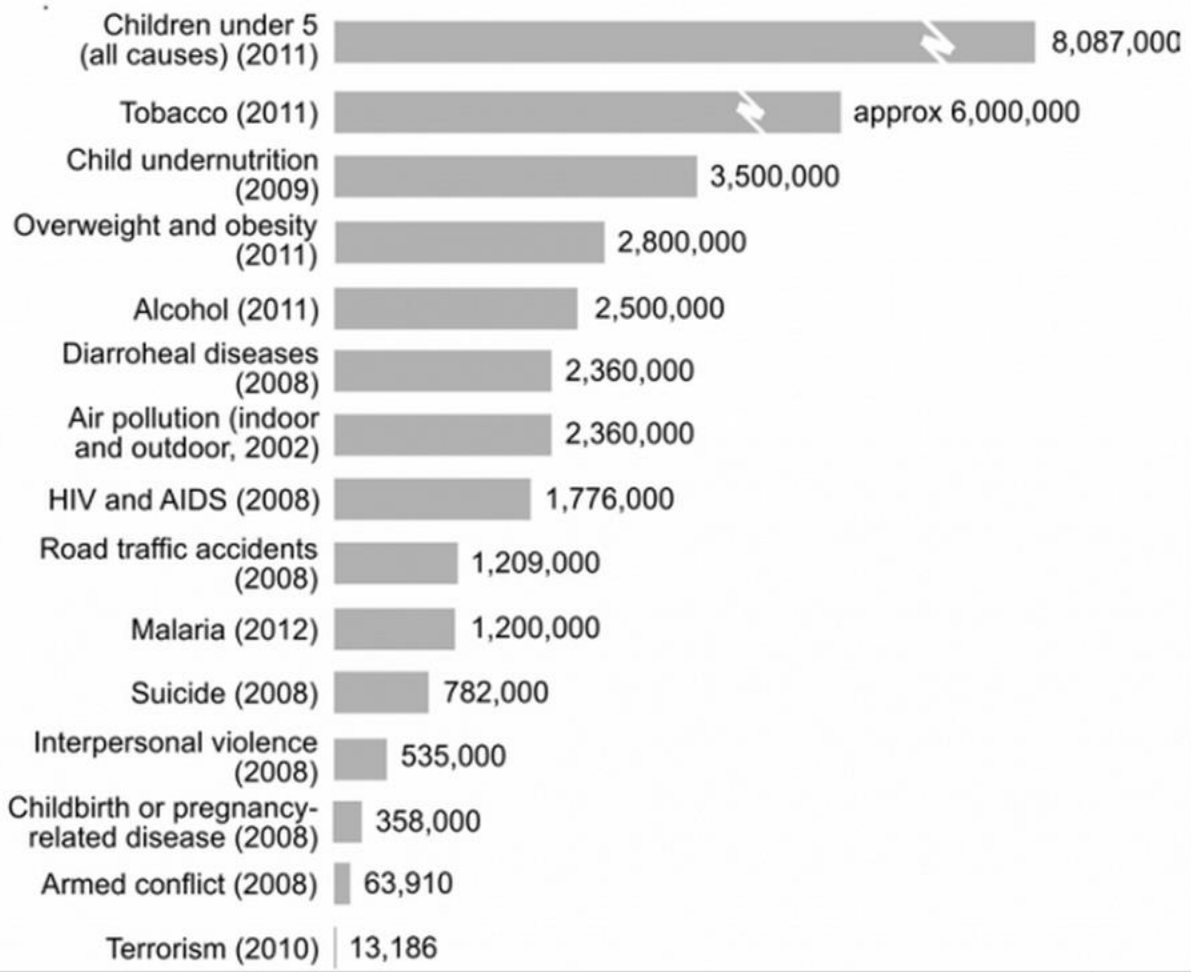
This site is written by Max Roser



Subscribe to the mailing list

Email Address

Subscribe









BREAKING HEALTH SECURITY NEWS



**Quake Survivors Face Hurricane Aftermath**



**Misery After Hurricane Tomas**



**Haiti Plagued by Cholera Outbreak**



**Hurricane Tomas Aftermath in Haiti**



**PAHO Press Briefing: Cholera Outbreak (02 Nov 2010)**



The Haiti Health Security YouDOP is a collaborative User-Defined Operational Picture used to share health security and biosurveillance information freely between the government (Federal, state, local, tribal, and territorial entities) and the private sector in support of increased situational awareness in Haiti. All information presented on this site is non-decisional in nature. For more information, or to request an account, please email in fo@youdop.org.

HAITI SITUATIONAL AWARENESS

NOVEMBER 8, 2010

- on Pan American Health Organization 9:26pm

**FOX News visits PROMESS. Dr. Hugo Prado talks and shows the**
- on Pan American Health Organization 8:58pm

**EOC Situation Report #12 – Cholera Outbreak in Haiti**
- on Pan American Health Organization 8:25pm

**PROMESS workers load an NGO truck with boxes of Ringer's La**
- on Pan American Health Organization 7:57pm

**A PAHO/WHO Staff Member Training Health Workers on Cholera**
- on Pan American Health Organization 1:18pm

**At Haiti's Ministry of Public Health and Population**
- on Pan American Health Organization 9:56am

**Clarification Letter from J/P HRO Haiti, Regarding CNN's Story or**
- on Pan American Health Organization 7:40am

**Brazilian Medical Professionals Are Helping Haiti to Combat Chol**

NOVEMBER 7, 2010

- on Pan American Health Organization 3:44pm

**Aerial Photos of Haiti**
- on Pan American Health Organization

**Community Outreach in Cité Soleil**

User login 10:59am November 9 -5:00 GMT
- on Pan American Health Organization 12:25pm

**PAHO/WHO In The Field**

HAITI CRISIS MAP

The Haiti Crisis Map is an interactive overlay of the latest vetted information sources around the ongoing crisis in Haiti, including statistics from the United Nations Office for the Coordination of Humanitarian Affairs (OCHA) and the Haiti Ministère de la Santé Publique et de la Population (MSPP).

The screenshot shows a map of Port-au-Prince, Haiti, with a 'LAYERS' menu overlaid. The menu includes the following options:

- Cholera Deaths**: Cumulative Reports (MSPP) [checked]
- General Case Reports**: Over Time Since 01/01/2010 [checked]
- Water Points**: Major Fresh Water Sources [checked]
- Healthcare Facilities**: Permanent & Triage [checked]

The map shows red markers for cholera deaths and blue markers for water points. Labels on the map include 'Port-au-Prince', 'Rue Pavée', 'Fort Nation', 'Poste Marché', and 'Saint-Martin'.

LIVE CHOLERA REPORTS FROM HAITI

Real-Time Twitter Posts  
Cholera in Haiti

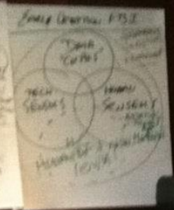
- smithjoanna Cholera outbreak has now spread to Port-au-Prince, #Haiti  
5 minutes ago
- vicky231197 Cholera confirmed for resident of Haiti's capital -  
<http://newzfor.me/?9q9o>  
4 minutes ago





SOLUTIONS  
STRATEGIC  
HOMEWORK  
- POC FOR AGENTS  
- ALSO IN OTHER  
COMPUTERS

STEP 1	STEP 2	STEP 3
1	5	5
2	6	6
3	4	5





**J Med Internet Res**

@JMedInternetRes



HOT Most purchased: Scoping Review on Search Queries and Social Media for Disease Surve... [bit.ly/1cX2KGL](https://bit.ly/1cX2KGL)  
[bit.ly/bjbKGC](https://bit.ly/bjbKGC)



AN INTERNATIONAL CONFERENCE ON



# digital disease detection

speakers



venue



Joseph B. Martin Conference Center  
Harvard Medical School  
77 Avenue Louis Pasteur  
Boston, MA 02115

about

**February 16-17, 2012**

HealthMap at Children's Hospital Boston is proud to present the 2012 International Conference on Digital Disease Detection.

Over the past fifteen years, Internet and mobile technology has significantly changed the landscape of public health surveillance, epidemic intelligence gathering, and outbreak data is disseminated through formal online announcements by government agencies, but also through informal channels such as social media sites, blogs, chat rooms, Web 2.0, and local news media and crowdsourcing platforms. These data streams have been credited with decreasing the time to detect an outbreak and formal recognition of an outbreak, allowing for an expedited response to the public health threat. Collectively, these online sources have improved the image of global public health through



BAD  
FOOD

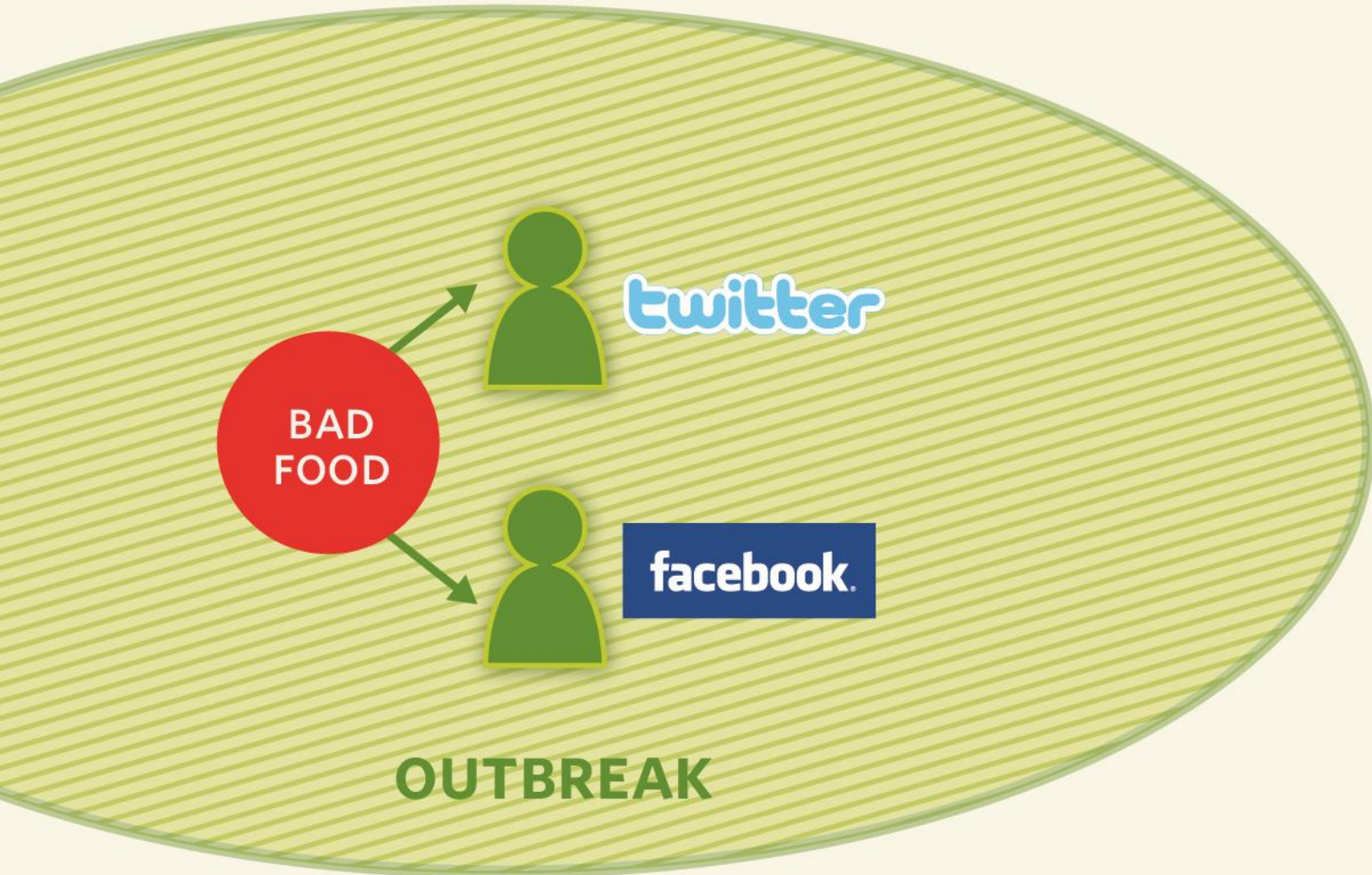


twitter



facebook.

OUTBREAK





**OUR GOAL OF RECRUITING  
ONE MILLION WOMEN STARTS  
WITH ONE — YOU.**

**Volunteers in the Army as of 3/1/13**

**0 3 7 1 7 7 7**

**→ SIGN UP TODAY!**



# Army of Women

## Study Closed in 26 hours!



### **JOANNE said...**


I am honored to participate in such a wonderful study... every step gets us closer to the final cure that will impact a large segment of our world's women. Thank God for these researchers!

December 13th, 2012 9:09 am

# Photosync

The logo features a stylized green vine that starts from the left, passes behind the word "Photosync", loops under it, and then extends to the right. It has several green leaves of varying sizes and a single purple flower with a yellow center at the end of the vine.

*An Open Research Project*



The goal of Photosync is to create the tools, space, and community to crowd-source data collection of photosynthesis and plant health data from species across the world.

Here's how it works!







- HOME
- DATA ▾
- APPS
- COMMUNITY
- METRICS
- OPEN DATA SITES
- GALLERY
- WHAT'S NEW

# HAPPY SECOND ANNIVERSARY DATA.GOV!



## Earthquake and Tsunami Datasets and Information

- Worldwide M1+ Earthquakes, Past 7 Days
- RadNet Map Interface for Near-Real-Time Radiation Monitoring Data
- Search other related datasets
- World Earthquake Interactive Map Demo

## SEARCH OUR CATALOGS



### DATA AND APPS



### COMMUNITIES



### OPEN GOVERNMENT



*The Health Data Initiative Forum III*

HEALTH

DATA PALOOZA

THE POWER OF HEALTH DATA AND INNOVATION UNLEASHED

*June 5-6, 2012 | Washington D.C.*

REGISTER NOW BEFORE SPOTS FILL UP! | [HDIFORUM.ORG](http://HDIFORUM.ORG) | [#HEALTHDATA](https://twitter.com/HEALTHDATA)

**"ROCK STARS" of Health Innovation**

**Atul  
Gawande**  
Surgeon and  
author

**Matt  
Miller**  
Contributor  
and columnist  
MSNBC/CNBC

**Bill  
Frist**  
Physician and  
Former Senate  
Majority Leader

**Kathleen  
Sebelius**  
Secretary of the U.S.  
Department of Health  
and Human Services

**Special Guest**

**Dominique Dawes**  
President's Council on Fitness,  
Sports and Nutrition  
Two-time Olympic gold medal  
winner





## Federal Health IT Strategic Plan

This Plan focuses on federal efforts to advance the collection, sharing, and use of interoperable health information to improve health care, individual, community and public health, and advance research.

[Learn More >](#)





***NEW 2014 Challenge Kicks Off*** *September 2014.*

**Develop breakthrough ideas  
to feed 9 billion people**

***Start a Revolution.***

SIGN UP TO LEARN MORE

# THE GLOBAL IMPACT COMPETITION

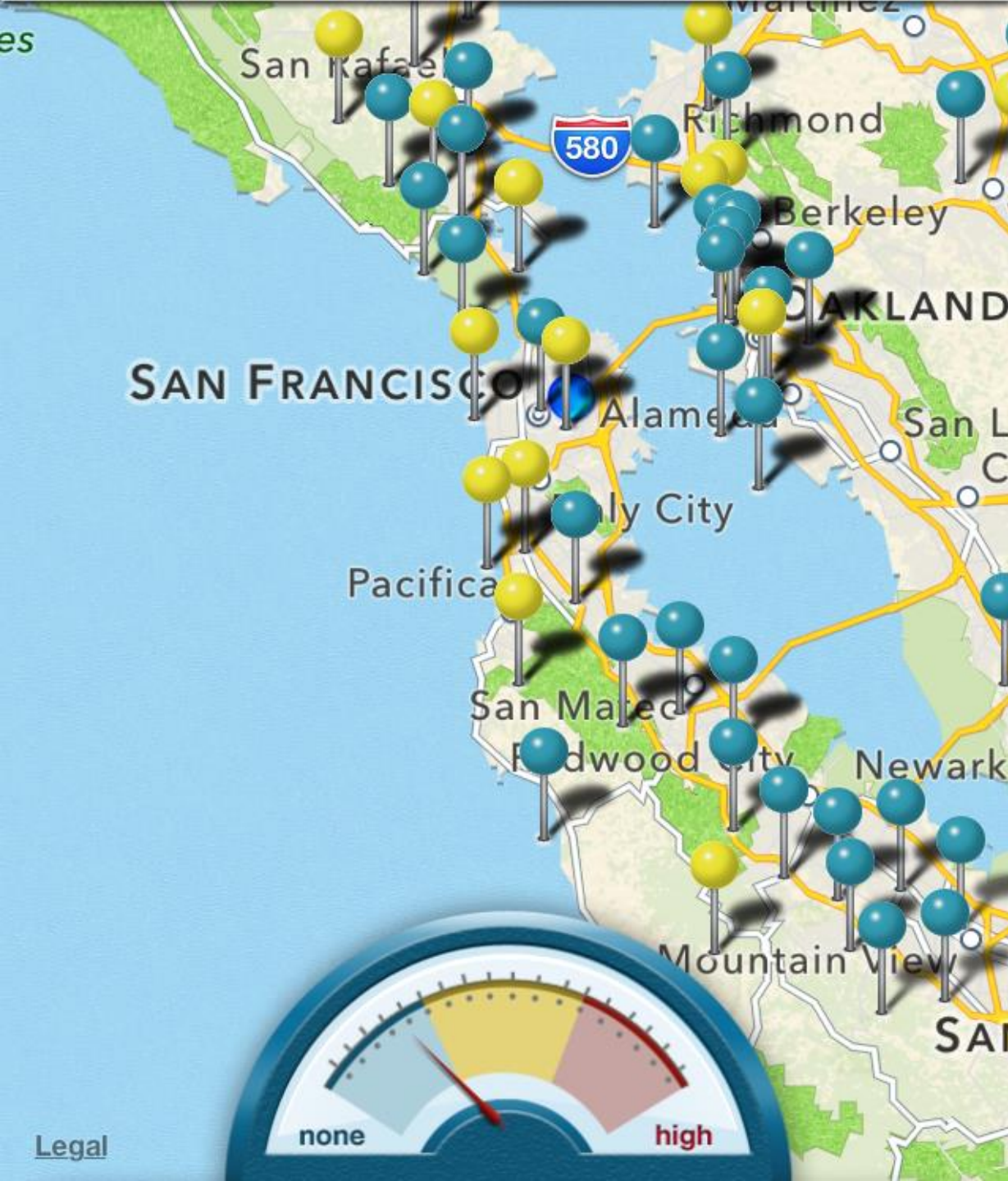
[Building a Better Tomorrow](#) / [The Competition](#) / [The Global Impact Competition](#)

Singularity University's: Canadian Global Impact Competition 



**Health Care**  
**Education**  
**Resource Management**  
**Food**  
**Community Development**

 0:04



 flu near you

### Flu Map